



YOUR NEIGHBORHOOD YOUR NATURAL PARK'

YOUR VOICE, YOUR PARK!

DID YOU KNOW:

- **YOU HAVE A PARK LESS THAN 0.2 MILES AWAY, RIGHT ACROSS YOUR STREET ON THE CORNER OF AVE 26 AND SAN FERNANDO**

WHAT WOULD YOU LIKE TO SEE IN THAT SPACE?

WE WANT TO HEAR FROM YOU!

YOUR PARK SHOULD REFLECT YOUR AND YOUR FAMILY'S VOICE.

LOS ANGELES RIVER CENTER & GARDENS

570 W. AVENUE 26
LOS ANGELES CA 90065

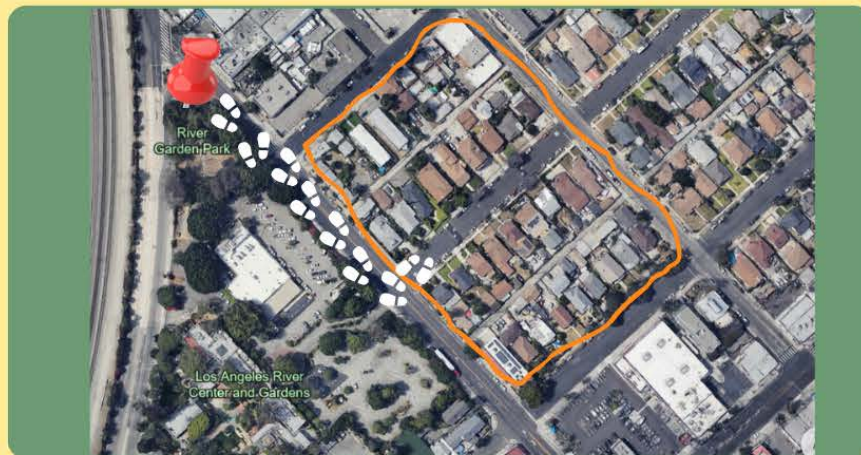
MORE INFORMATION:

www.mujeresdelatierra.org
info@mujeresdelatierra.org
323.542.3765

JOIN US FOR OUR PLATICAS AND COMMUNITY FAMILY EVENTS



REGISTER



THE PAST

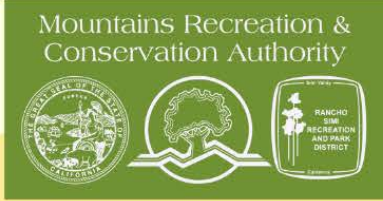
HOMES SAT ALONG AVENUE 26 IN 1902. IN 1953 THE FIRST OFFICES FOR THE RIVER CENTER WERE BUILT. THE ONE- STORY INDUSTRIAL OFFICE BUILDING WENT ON TO BE PROPERTY OF LAWRY'S RESTAURANT

THE PRESENT

NOW, THE LOS ANGELES RIVER CENTER AND GARDENS LEASES OFFICE SPACE TO COMMUNITY GROUPS AND NON PROFIT ORGANIZATIONS

THE FUTURE

THIS IS YOUR BACKYARD AND COMMUNITY. VOICE YOUR THOUGHTS AND HELP DEVELOP THIS SPACE INTO A GREEN NATURAL OUTDOOR PARK. WHAT WOULD YOU LIKE TO SEE HERE?



TU VECINDARIO TU PARQUE NATURAL

TÚ VOZ, TÚ PARQUE!

SABIAS:

**QUE ESTE PARQUE ESTA A SOLO
0.2 MILLAS DE TU HOGAR?
SIMPLEMENTE CRUZA LA CALLE
EN LA ESQUINA DE LA AVENIDA
26 Y SANFERNANDO**

**¿QUE TE GUSTARIA VER EN ESTE
ESPACIO?**

**QUEREMOS SABER TU OPINION!
TU PARQUE DEBE REFLEJAR TU VOZ
Y LA DE TU FAMILIA.**

THE LOS ANGELES RIVER CENTER & GARDENS

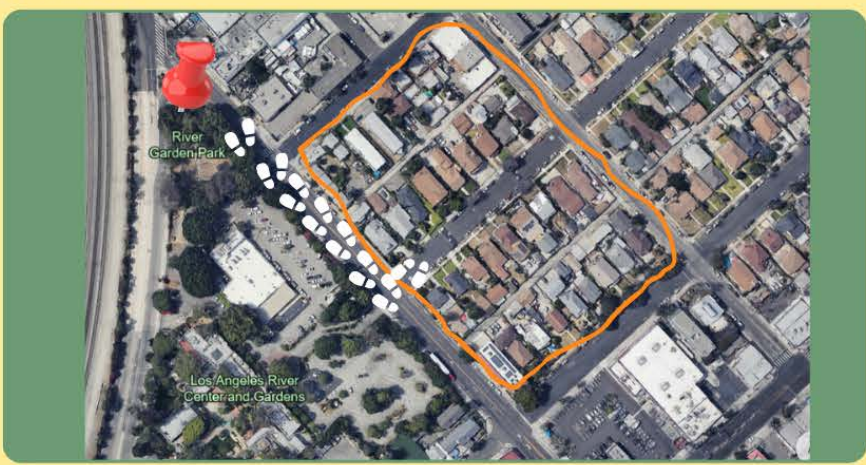
570 W. AVENUE 26
LOS ANGELES CA 90065

MAS INFORMACION:
www.mujaresdelatierra.org
info@mujaresdelatierra.org
323.542.3765

**ACOMPANANOS A
NUESTRAS PLATICAS
Y EVENTOS
COMUNITARIOS**



REGISTRATE



EL PASADO

HOGARES ESTABAN EN LA AVENIDA 26 EN 1902. EN 1953 SE CONSTRUYERON LAS PRIMERAS OFICINAS DEL RIVER CENTER. EL EDIFICIO INDUSTRIAL DE OFICINAS DE UNA PLANTA PASÓ A SER PROPIEDAD DEL RESTAURANTE LAWRY'S

EL PRESENTE

AHORA, LOS ANGELES RIVER CENTER AND GARDENS ALQUILA ESPACIO DE OFICINAS A ORGANIZACIONES COMUNITARIAS Y SIN FINES DE LUCRO

EL FUTURO

ESTO ES TU COMUNIDAD Y VECINDARIO! USA TU VOZ PARA AYUDARNOS A CONVERTIR ESTE ESPACIO EN UN PARQUE NATURAL ¿QUE TE GUSTARIA VER?