

**CURVE DATA**

NO	Δ	R	L
①	14°12'00"	(321.14)	(79.59)
②	30°25'00"	(257.49)	(136.69)
③	9°54'55"	(257.49)	44.56
④	6°50'34"	(321.14)	38.35
⑤	12°51'57"	(321.14)	72.11

PCL NO	TOTAL AREA
4-7RE	4,857± Sq. ft. (Part A, B, & C)
4-8RE	5,181± Sq. ft.

**LINE DATA**

LINE	BEARING	DISTANCE
Ⓐ	N 45°16'00"E	(15.00)

**EXHIBIT B**

**PARTITION OF THE RO LAS VIRGENES**

A (POR)  
**PABLO REYES 724.21-AC ALLOT**  
 AIN 2055-010-901

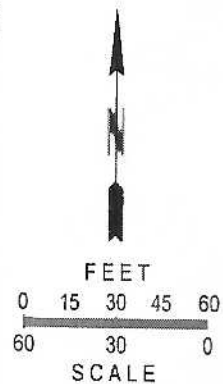
A (POR)  
**PABLO REYES 724.21-AC ALLOT**  
 AIN 2052-009-900

SCC 2898

4-7RE  
 Part A

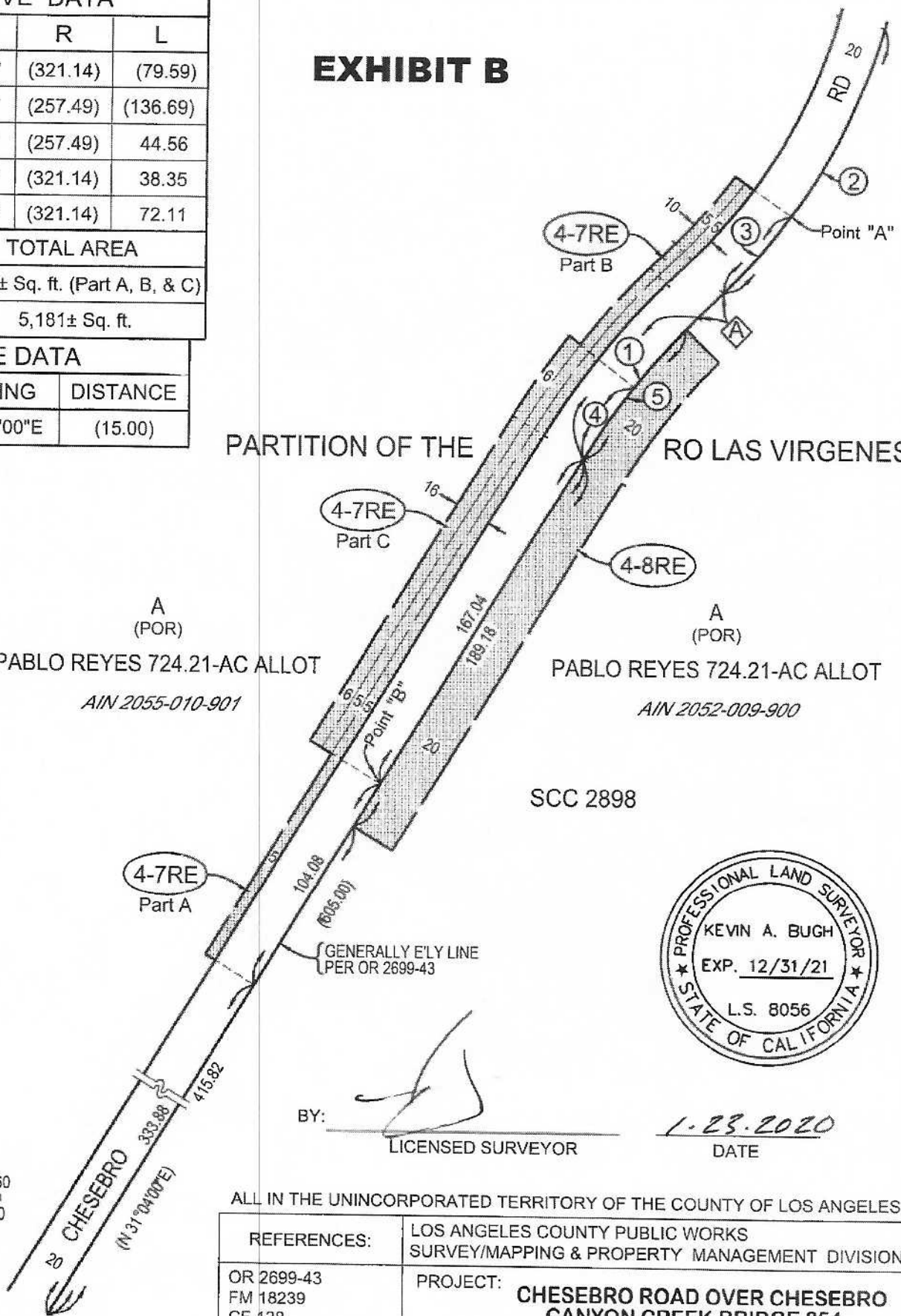
4-7RE  
 Part C

4-8RE



**LEGEND:**

( ) DENOTES RECORD DIMENSIONS.  
 DIMENSIONS ARE IN FEET.



BY:   
 LICENSED SURVEYOR

1-23-2020  
 DATE

ALL IN THE UNINCORPORATED TERRITORY OF THE COUNTY OF LOS ANGELES

REFERENCES:	LOS ANGELES COUNTY PUBLIC WORKS SURVEY/MAPPING & PROPERTY MANAGEMENT DIVISION			
OR 2699-43 FM 18239 CF 138 AMB 2055-010 2052-009 IM 159-057	PROJECT:	<b>CHESEBRO ROAD OVER CHESEBRO CANYON CREEK BRIDGE 854</b>		
PROJECT I.D. RDC0016359	PREPARED BY V LIPANA	DATE 1-23-2020	SHEET 1 OF 1	