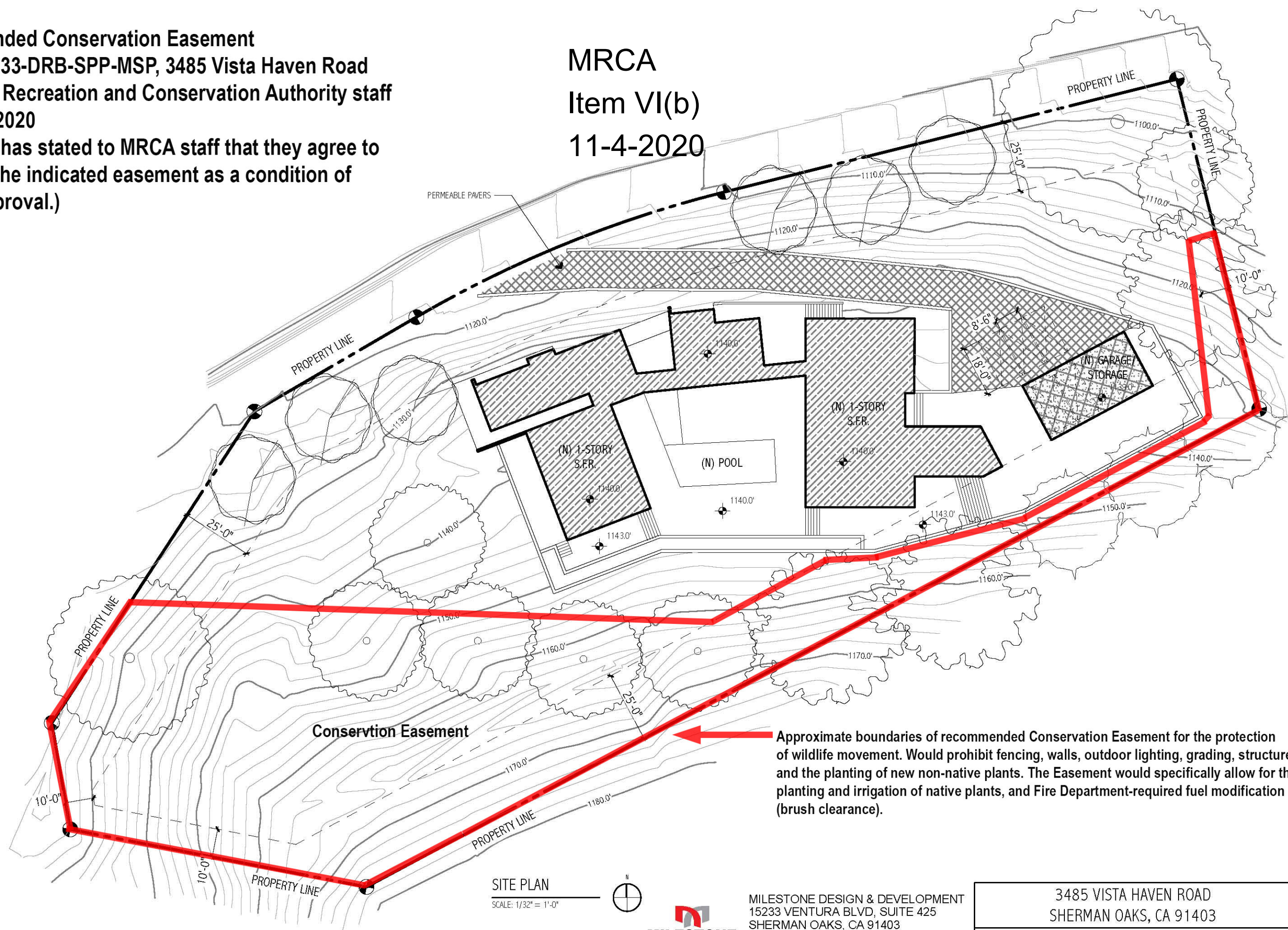


Recommended Conservation Easement
DIR-2020-233-DRB-SPP-MSP, 3485 Vista Haven Road
Mountains Recreation and Conservation Authority staff
August 5, 2020
(Applicant has stated to MRCA staff that they agree to
volunteer the indicated easement as a condition of
project approval.)

MRCA
Item VI(b)
11-4-2020



Approximate boundaries of recommended Conservation Easement for the protection of wildlife movement. Would prohibit fencing, walls, outdoor lighting, grading, structures, and the planting of new non-native plants. The Easement would specifically allow for the planting and irrigation of native plants, and Fire Department-required fuel modification (brush clearance).

SITE PLAN
SCALE: 1/32" = 1'-0"



MILESTONE DESIGN & DEVELOPMENT
15233 VENTURA BLVD, SUITE 425
SHERMAN OAKS, CA 91403
C: (818) 995-8711
INFO@MILESTONEDD.COM

3485 VISTA HAVEN ROAD SHERMAN OAKS, CA 91403	40
E-6 PLOT PLAN / SITE PLAN	