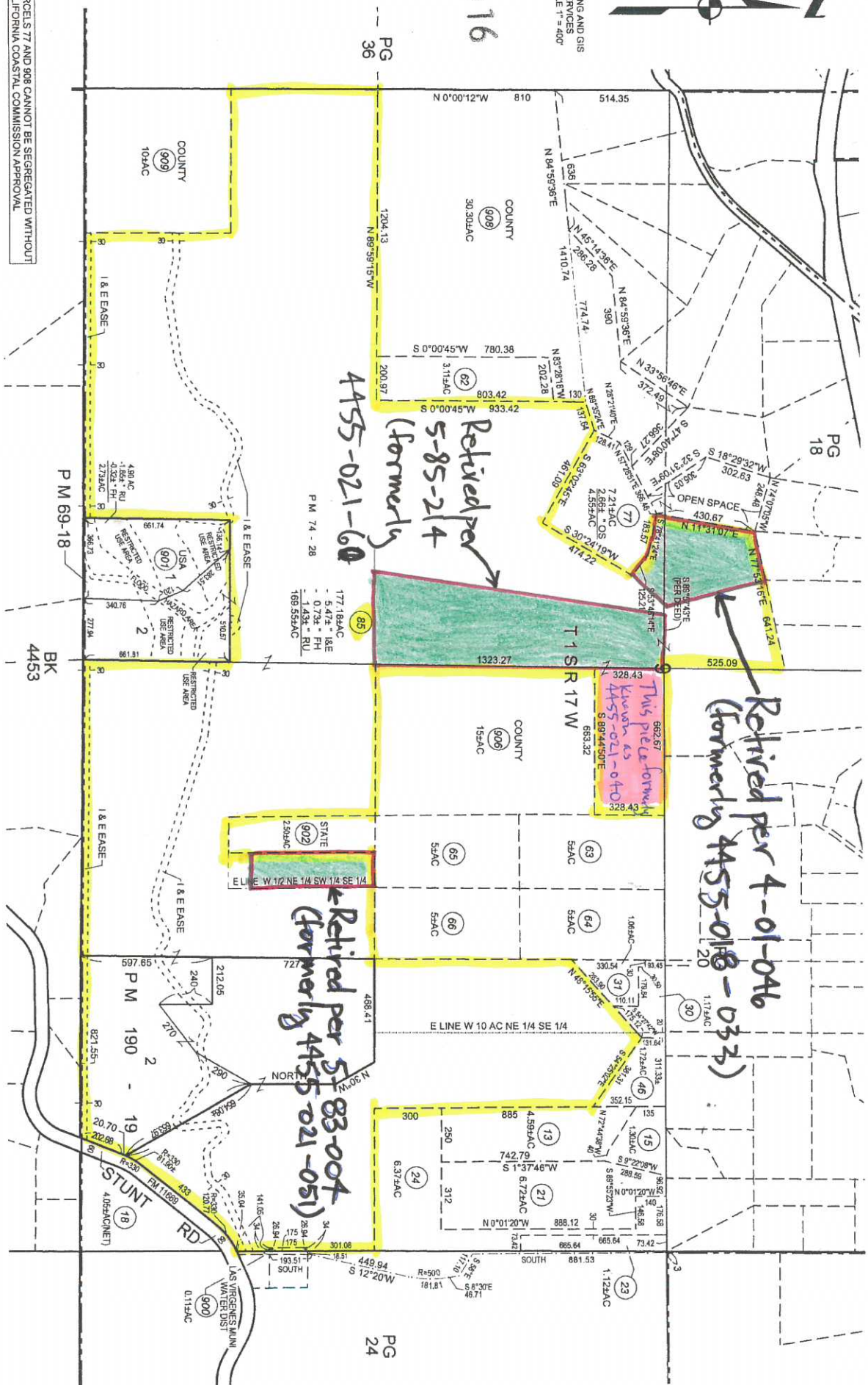




MAPPING AND GIS SERVICES SCALE 1" = 400'



Retired per 5-85-214 (formerly 4455-021-60)

Retired per 4-01-046 (formerly 4455-018-033)

Retired per 5-83-004 (formerly 4455-021-051)

This piece formerly known as 4455-021-040

PARCELS 77 AND 908 CANNOT BE SEGREGATED WITHOUT CALIFORNIA COASTAL COMMISSION APPROVAL

Date Printed: 12/23/2015 9:31:49 AM Date Saved: 12/23/2015 9:20:30 AM