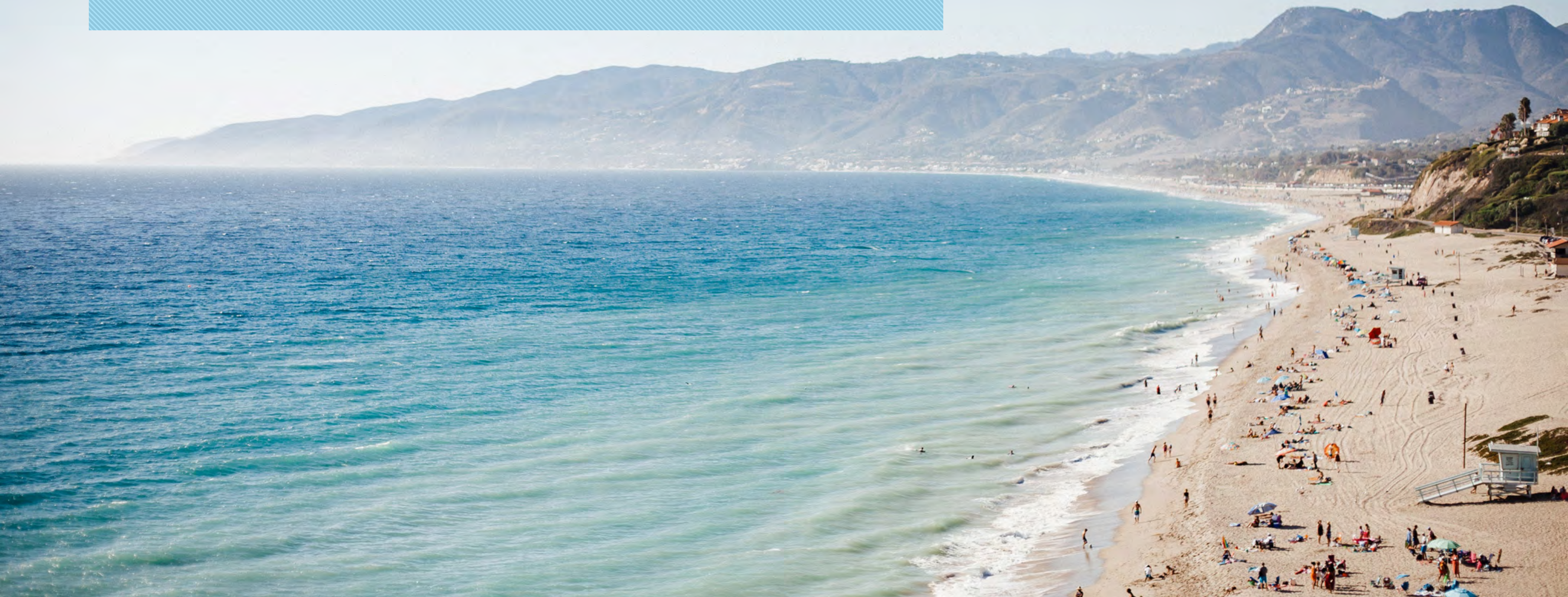


MALIBU COASTAL ACCESS PUBLIC WORKS PLAN EIR

PUBLIC SCOPING MEETING HOSTED BY
THE MOUNTAINS RECREATION AND CONSERVATION AUTHORITY
STATE COASTAL CONSERVANCY
JANUARY 22, 2020



AGENDA

- ▶ INTRODUCTIONS AND ROLES
- ▶ PURPOSE OF THE MEETING
- ▶ PROJECT OVERVIEW
- ▶ CEQA PROCESS OVERVIEW
- ▶ SCOPING: ENVIRONMENTAL IMPACTS AND ALTERNATIVES
- ▶ PUBLIC PARTICIPATION OPPORTUNITIES
- ▶ PUBLIC COMMENTS



INTRODUCTIONS AND ROLES

- ▶ MOUNTAINS RECREATION AND CONSERVATION AUTHORITY (MRCA)
CO-LEAD AGENCY
- ▶ STATE COASTAL CONSERVANCY
CO-LEAD AGENCY
- ▶ ENVIRONMENTAL SCIENCE ASSOCIATES
ENVIRONMENTAL CONSULTANT
- ▶ CHESTER BRITT
MODERATOR
- ▶ OTHER PUBLIC AGENCIES
- ▶ MEMBERS OF THE PUBLIC

PURPOSE OF THE MEETING

THE PURPOSE OF THE PUBLIC SCOPING MEETING IS TO RECEIVE INPUT FROM MEMBERS OF THE PUBLIC ON THE SCOPE AND CONTENT OF THE EIR.

SCOPING IS AN OPEN PROCESS FOR IDENTIFYING

- ▶ ALTERNATIVES TO CONSIDER
- ▶ ISSUES TO ADDRESS IN THE IMPACTS ANALYSIS
- ▶ INFORMATION OR DATA TO INCLUDE
- ▶ RESOURCES THAT MAY BE AFFECTED
- ▶ TOPICS THAT CONCERN VARIOUS STAKEHOLDERS

SCOPING IS NOT

- ▶ YOUR FINAL OPPORTUNITY TO COMMENT ON THE PROJECT

PLEASE FILL OUT A SPEAKER SLIP!

PROJECT OVERVIEW



PROJECT OBJECTIVE

INCREASE PUBLIC ACCESS AND
RECREATION OPPORTUNITIES
ALONG THE COAST IN MALIBU

PROJECT SCOPE

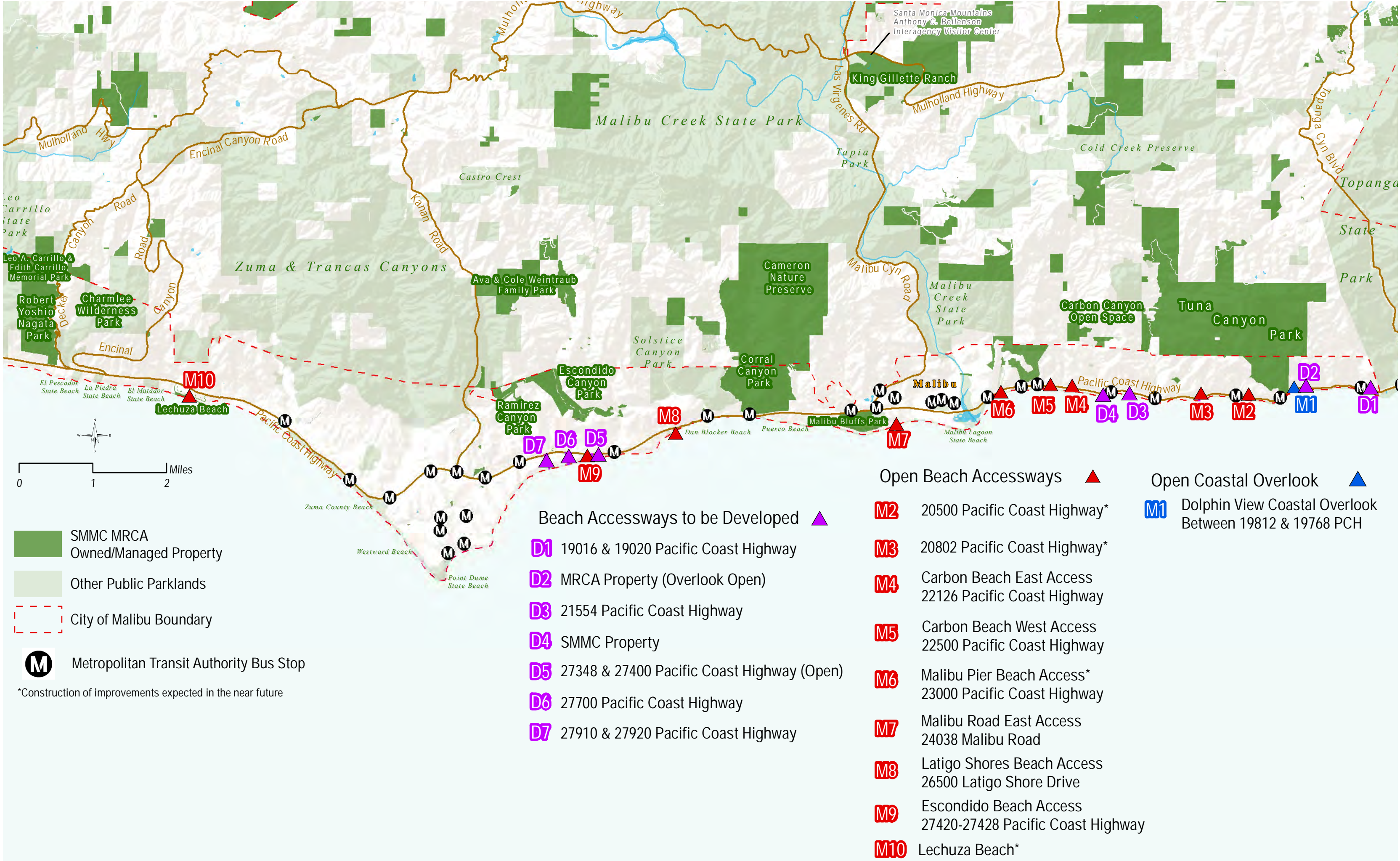
17 PUBLIC ACCESS SITES IN
PUBLIC WORKS PLAN

DEVELOPMENT PLANS AND
POLICIES FOR 7 SITES

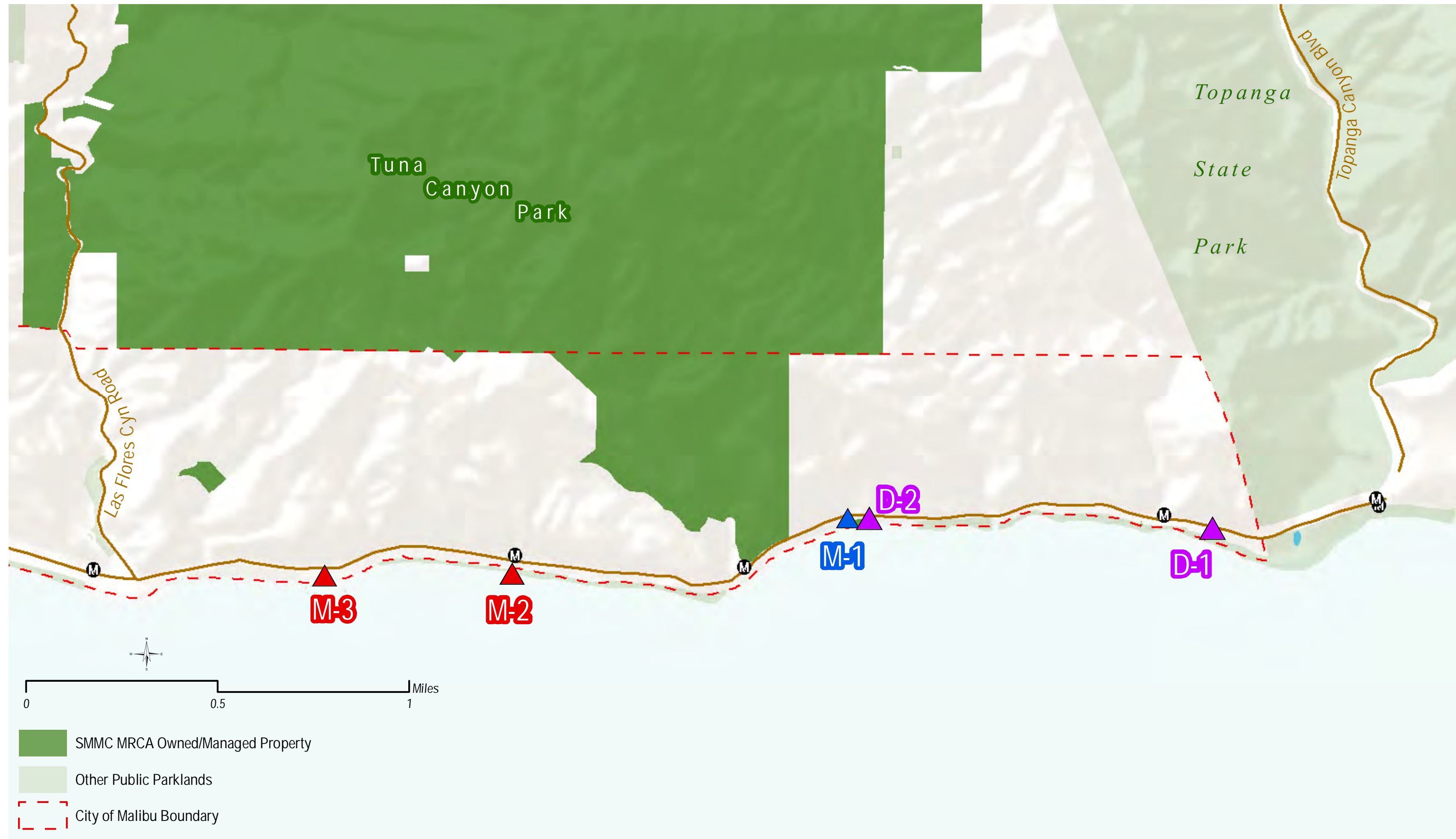
+

MANAGEMENT POLICIES FOR
ALL SITES

PROJECT SITES: OVERVIEW



PROJECT SITES: TOPANGA CANYON-LAS FLORES CANYON



PROJECT SITES: LAS FLORES CANYON-MALIBU CANYON



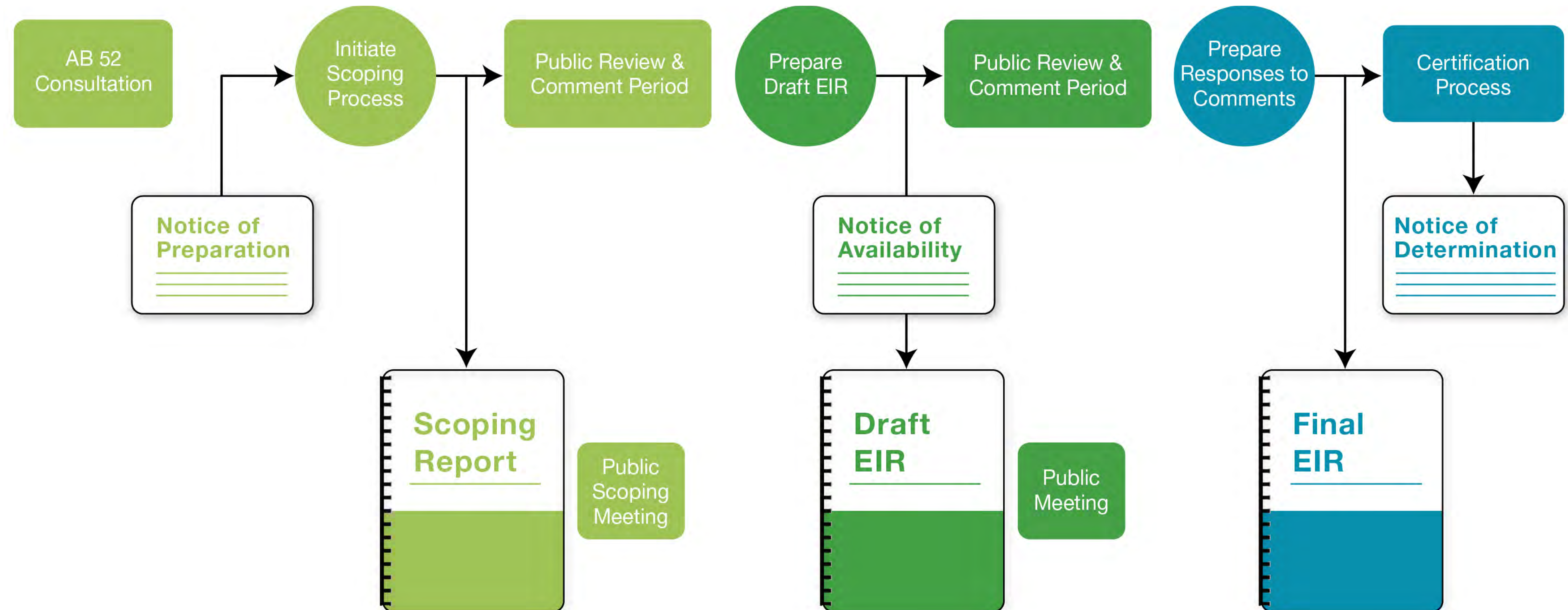
PROJECT SITES: MALIBU CANYON-ESCONDIDO CANYON



PROJECT SITES: ESCONDIDO CANYON-LACHUSA CANYON



CEQA PROCESS OVERVIEW



SCOPING

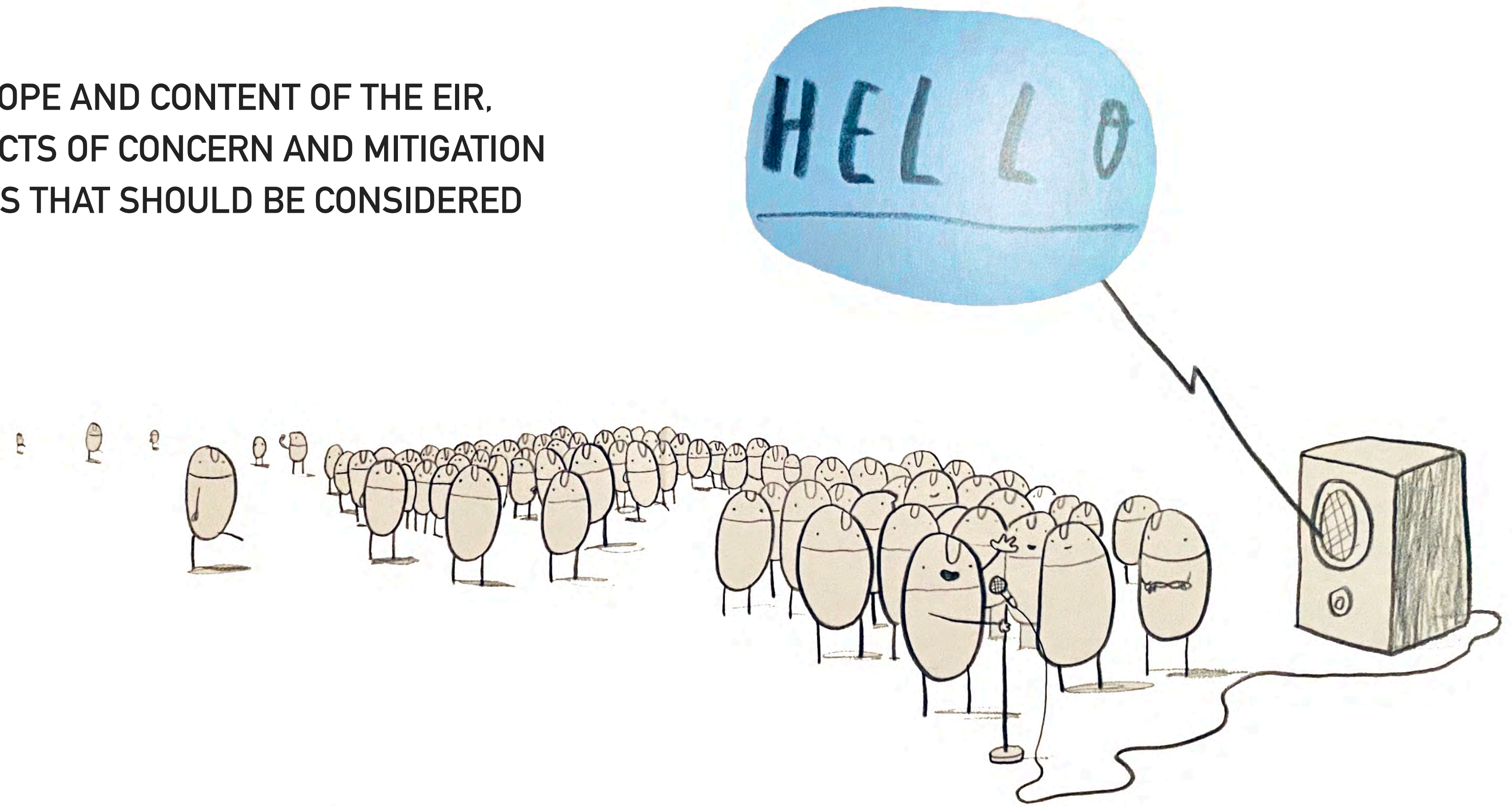
PURPOSE

- ▶ SOLICIT INPUT AS TO THE SCOPE AND CONTENT OF THE EIR, INCLUDING POTENTIAL IMPACTS OF CONCERN AND MITIGATION MEASURES OR ALTERNATIVES THAT SHOULD BE CONSIDERED

AGENCY SCOPING

- ▶ RESPONSIBLE AGENCIES
- ▶ TRUSTEE AGENCIES
- ▶ OTHER AGENCIES

PUBLIC SCOPING



SCOPING: ENVIRONMENTAL IMPACTS

RESOURCES TO BE EVALUATED

AESTHETICS

AGRICULTURE AND FORESTRY RESOURCES

AIR QUALITY AND GREENHOUSE GAS EMISSIONS

BIOLOGICAL RESOURCES

CULTURAL AND TRIBAL CULTURAL RESOURCES

ENERGY

GEOLOGY, SOILS, AND PALEONTOLOGY

HAZARDS AND HAZARDOUS MATERIALS

HYDROLOGY AND WATER QUALITY

LAND USE AND PLANNING

MINERAL RESOURCES

NOISE

POPULATION AND HOUSING

PUBLIC SERVICES

RECREATION

TRANSPORTATION

UTILITIES AND SERVICE SYSTEMS

WILDFIRE

SCOPING: POTENTIAL ALTERNATIVES

PROJECT ALTERNATIVES

- ▶ REASONABLE OR FEASIBLE ALTERNATIVES TO THE PROPOSED PROJECT OR ITS LOCATION
- ▶ CAPABLE OF AVOIDING OR SUBSTANTIALLY LESSENING ANY SIGNIFICANT PROJECT IMPACTS
- ▶ OK TO IMPEDE TO SOME DEGREE THE ATTAINMENT OF THE OBJECTIVES OR BE COSTLIER

NO PROJECT ALTERNATIVE

- ▶ WHAT WOULD BE REASONABLY EXPECTED TO OCCUR IN THE FORESEEABLE FUTURE IF THE PROPOSED PROJECT WERE NOT APPROVED
- ▶ BASED ON CURRENT PLANS, CONSISTENT WITH AVAILABLE INFRASTRUCTURE AND SERVICES

SCOPING: POTENTIAL ALTERNATIVES

PROPOSED PROJECT

6 “M” SITES CURRENTLY OPEN TO PUBLIC ACCESS WOULD CONTINUE (UNCHANGED) TO BE OPEN TO PUBLIC USE

4 “M” SITES WOULD BE DEVELOPED FOR PUBLIC ACCESS THROUGH EACH RESPECTIVE SITE’S ENTITLEMENT PROCESS

7 “D” SITES WOULD BE DEVELOPED OR IMPROVED, AND THEREAFTER MANAGED FOR PUBLIC ACCESS

RELATED ENVIRONMENTAL IMPACTS AND BENEFITS

NO PROJECT ALTERNATIVE

6 “M” SITES CURRENTLY OPEN TO PUBLIC ACCESS WOULD CONTINUE (UNCHANGED) TO BE OPEN TO PUBLIC USE

4 “M” SITES WOULD BE DEVELOPED FOR PUBLIC ACCESS THROUGH EACH RESPECTIVE SITE’S ENTITLEMENT PROCESS

7 “D” SITES WOULD NOT BE DEVELOPED OR IMPROVED

RELATED ENVIRONMENTAL IMPACTS AND BENEFITS

PROJECT ALTERNATIVES

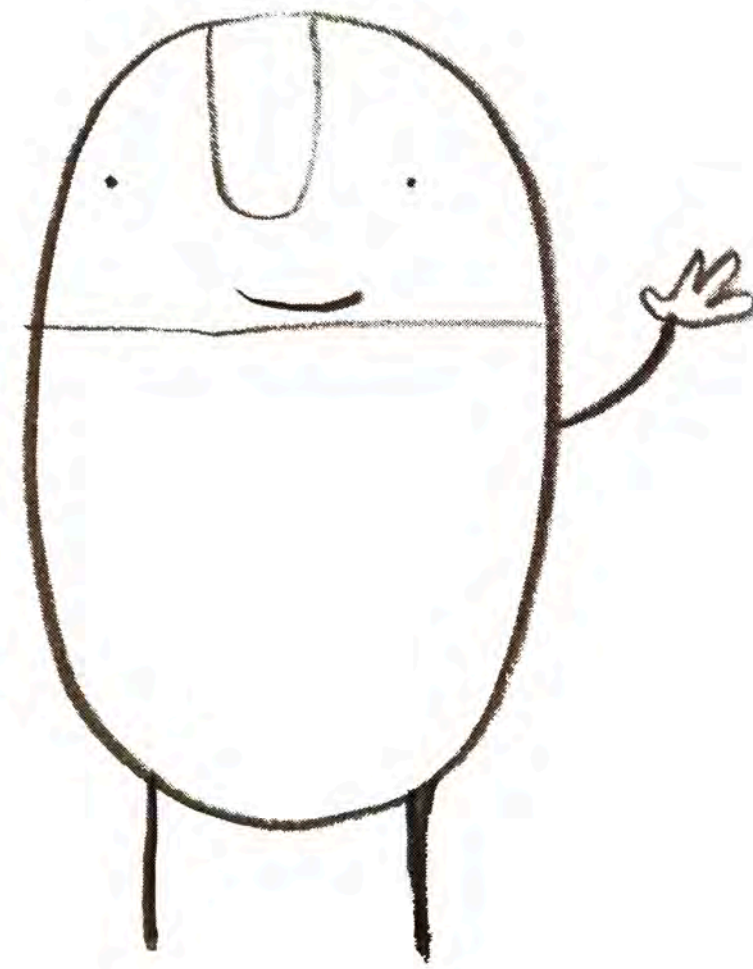
HOW TO REDUCE POTENTIAL IMPACTS FROM CONSTRUCTION-RELATED AIR EMISSIONS?

HOW TO REDUCE POTENTIAL IMPACTS TO BIOLOGICAL RESOURCES AT THE DEVELOPMENT SITES?

OTHER OPTIONS TO CONSIDER FOR POTENTIAL REDUCTION OF IMPACTS?

PUBLIC PARTICIPATION

SPEAK TONIGHT



SUBMIT WRITTEN COMMENTS ON OR BEFORE 5 P.M. FEBRUARY 7, 2020

MAIL WRITTEN COMMENTS:
MOUNTAINS RECREATION & CONSERVATION AUTHORITY
RE: MALIBU COASTAL ACCESS PUBLIC WORKS PLAN
ATTN: JESSICA NGUYEN, PROJECT MANAGER
26800 MULHOLLAND HIGHWAY
CALABASAS, CALIFORNIA 91302

E-MAIL WRITTEN COMMENTS:
COASTALACCESSPWP@MRCA.CA.GOV

STAY INFORMED

**REQUEST TO BE NOTIFIED ABOUT THE PROJECT
AND KEEP AN EYE ON THE PROJECT WEBSITE.**

PROVIDE COMMENTS ON THE DRAFT EIR

PUBLIC COMMENTS

FILL OUT SPEAKER CARD

DURING YOUR TURN PLEASE:
STATE AND SPELL YOUR NAME,
FOCUS COMMENTS ON SCOPING SUBJECTS,
RESPECT TIME LIMIT

DURING OTHER'S TURNS PLEASE:
SUPPORT EVERYONE'S PARTICIPATION,
RESPECT OTHER PERSPECTIVES,
QUIET DURING ALL PUBLIC COMMENTS

SUBMIT WRITTEN COMMENT SHEETS

SCOPING SUBJECTS:
ALTERNATIVES TO CONSIDER;
ISSUES TO ADDRESS IN IMPACTS ANALYSIS;
INFORMATION OR DATA TO INCLUDE;
RESOURCES THAT MAY BE AFFECTED

THANK YOU FOR YOUR PARTICIPATION