

MRCA
Attachment
1/9/2019
Agenda Item VII(b)

nuvis
LANDSCAPE ARCHITECTURE

PROPOSAL
SUBMITTAL

MOUNTAINS RECREATION & CONSERVATION AUTHORITY

DESIGN SERVICES
AT CONFLUENCE
PARK PHASE 2

NOVEMBER 2, 2018



urbandesign

nu vision
nu leadership
nu design

contact@nuvis.net
www.nuvis.net



November 2, 2018

TO: Sally Garcia, Project Assistant, MRCA
FROM: Perry A. Cardoza, PLA, ASLA, President, NUVIS

RE: RFP for Design Services at Confluence Park Phase 2

Dear Sally,

Thank you for your time to meet at the project site and our opportunity to submit our proposal for Confluence Park Phase 2. As a local firm, NUVIS is fully vested in working with the MRCA and community to ensure that the plans developed for the site reflect the communities needs while fitting into the goals of the MRCA.

NUVIS' Los Angeles office is a few simple blocks from the park site. Not only are we interested design professionals, but we are concerned community members. We have witnessed good intentions on some local projects head sideways due to factors such as vandalism, homeless camps, and lack of maintenance. Our team will work with the MRCA to develop a design solution tailored to the project site with an emphasis on improving the environment while enhancing the overall visual image and community park use to the fullest extent possible. Our subconsultant Watearth has unique qualifications in extending their stormwater experience with community educational experiences which may be valuable to MRCA and the community.

Our team has been providing design solutions along the Los Angeles river and for urban parks for decades. Protection of water quality, improvement measures for storm water run-off into the river, and urban park development are important to the environment and the community. Consideration for land form, natural resources, user profiles, proper programming and long-term maintenance of the project site are critical in the success of the project. When an urban park is properly programmed and thoroughly enjoyed by the community, we help to create *territorial enforcement* which lends to user's familiarity with each other and the surroundings. A design which is easy to maintain is an extension of territorial reinforcement. The more rundown an area, the more likely it will attract unwanted activities. The NUVIS team will collaborate with the community and MRCA to create such territorial enforcement for the park.

NUVIS is a strong proponent of participatory planning and design, believing that the goals and direction of a project should evolve from a process which provides for expression of concerns and values of those involved and affected by the project. We enjoy the process of working with the community and its various organizations and groups to build a consensus of ideas that encourages interactive opportunities for a variety of age and user groups. Involvement by all interested parties is encouraged throughout the design process, with each phase of the process responding to and building upon the input received. Occasionally ideas presented cannot be incorporated into the plan due to program conflicts, budgetary issues, and/or right-of-way or jurisdictional concerns. Through early collaboration, voices can be heard and responded to without simply being dismissed.

The NUVIS team experience with similar projects, excellence in landscape architecture and community planning, and direct familiarity with the project site indicate our qualifications for this project. We look forward to hearing from you!

Sincerely,



Perry A. Cardoza, PLA, ASLA
President

Table of Contents

Design Approach Narrative	3
Project Understanding.....	3
Approach and Project Management	4
Scope of Work.....	5
Schematic Design	5
Design Development Plans.....	7
Project Availability	7
Project Team	8
NUVIS.....	8
Subconsultant – Watearth	12
Organizational Chart	16
Fee Proposal.....	17
Schedule/Timeline.....	18

Design Approach Narrative

Project Understanding

The MRCA in conjunction with the City of Los Angeles is seeking a highly qualified landscape architect to lead the preliminary design for Confluence Park Phase 2. The scope of services includes schematic design, design development, community meetings, and meetings with the City in the development of park plans for this 1-acre site into a showcase passive park.

The site sits adjacent to the Los Angeles River and Arroyo Seco. The park is Proposition 1 funded, and as environmentally challenged parcel of land, there is an opportunity to develop creative storm water capture/treatment and attractive California friendly landscape design. We see the park serving as a place of respite for those using the river trail or as a place local business owners or residents to escape to during the day to relax. Connections to each piece of the park, bike trail, and sidewalks should be ADA compliant and promote easy access.

NUVIS' office is just a few blocks from the park site. As a local firm, we are very familiar with the neighborhood and would be delighted to see the area refreshed to promote a safe park place and sense of pride in the community. Unfortunately, we have witnessed the deterioration to the round-about and Confluence Park Phase 1. Lack of maintenance is evident while vandalism is also a problem. We know that the homeless population in the area is growing, and some local public areas have degraded due to the camps. The design will need to consider these challenges, learning from past good intentions and developing a design solution which will address real problems in order serve the community for years to come.

The space should be safe and be accessible to all people who wish to enjoy the park. CPTED (Crime Prevention through Environmental Design) will be a critical design principal for this park. While complementing improvements which have been made previously, the design should also be easy to maintain, safe, deter vandalism, deter homeless camps, and provide visible lines for law enforcement.

Noise from vehicular and train traffic is a particular nuisance. Its very difficult to carry on a conversation on the site at times due to noise levels. NUVIS will work with the MRCA to seek creative opportunities to mitigate the traffic noise through landscape design at the park level.

The design will be community driven through a series of community input meetings. From experience, strong foundation support and enthusiastic buy-in from community members allows for a new park to be designed and constructed quickly, bringing much needed green space to neighborhoods. Our goal will be to partner with the community to develop the right facilities and programming based on community cultural, historical and demographic profiles to attract users to the park. We will explore opportunities to provide educational information to the park site through interpretative signage.

Noted in 'National Study for Neighborhood Parks', proximity to a park does not guarantee people will use it: amenities, signage, and programming all determine who is active in parks and how people will use them. Adults comprise 49% of park visitors, but seniors only account for 4% of park users even though they make up nearly 20% of the general population. Parks that are programmed appropriately for the community and have walking loops attract twice as many seniors. Typically adult park users help to deter unwanted activities at park spaces.

In the same study and from NUVIS' own park development experience we find that:

- good design and the right equipment selection can make a 1-AC park seem like ten, offering a different experience each visit;
- Partnering with local groups are effective ways of letting people know they are not powerless to improve their parks;
- Partnerships between municipalities, NPOs and community organizations can work together by leveraging resources and expertise towards the same goal.
- Sustainable park investment means equipping communities to thrive. Comprehensive park investment in an under-resourced and over-burdened neighborhood means addressing the many systemic issues at play so that the park can truly serve the needs of that community.

While not a requirement, NUVIS would recommend that the MRCA consider the inclusion of Watearth as our civil engineering subconsultant for the project. Watearth will provide Schematic Design and Design Development assistance for stormwater management of the proposed Confluence Park Phase 2. Watearth designed and provided construction services including Construction General Permit inspections for eight public facilities including parks and schools. The site is extensively modified so will require customized LID designs based on soil type and associated infiltration classification (i.e., well-drained Type "A" sandy soils versus poorly-drained Type "D" clay soils). Our evaluation will include regulatory flood plains, drainage patterns from available topographic data and site reconnaissance, soils types, geotechnical studies, existing impervious cover, existing drainage system, existing streams or waterways. If data is not available on the critical soils parameters required for the hydrology and water quality evaluation and modeling, we will apply our specialist skills at selecting hydraulic conductivity and associated parameters from standard tables based on soils classification. We also examine the Clean Water Act 303(d) list and Total Maximum Daily Load (TMDL) requirements for the receiving system(s).

Approach and Project Management

Our approach will be based off the information contained in the RFP and Q&A, intel gathered during our site meeting with the MRCA, observed state of other similar improvements, our team's experience with similar projects in urban areas, and our knowledge of the area. The design will be prompted by community input, site opportunities/constraints, and MRCA/City of Los Angeles budgets of time and resources.

NUVIS' assigned Principal in Charge/Project Manager will be a fully licensed landscape architect and will be in charge of all aspects of the project from beginning through project completions. They will be responsible for team coordination and completeness of services.

NUVIS will approach this project through practical analysis of the unique conditions associated with the particular location and program criterion. Design solutions are then tailored to the specific situation to ensure maximum effectiveness. Our project management process is founded upon:

- understanding, articulating and resolving specific project issues;
- establishing and following a well-defined design statement;
- innovative, creative analysis and alternative idea generation; and
- intensive design team collaboration.

A number of management tools will be utilized in progressing the project including graphically presented timeline, regular meetings, and regular progress/project status reports. Our goals will be to:

- develop an awareness of the project and MRCA/City expectations;
- obtain concurrence on a time schedule;
- identify issues before they become problems;
- review appropriately, critical issues;
- maintain communication flow with the MRCA/City and subconsultants; and
- provide technical direction for project requirements and standards.

Regularly scheduled in house meetings will be held with members of the NUVIS team. Schedules and technical items will be reviewed, and remedial action will be taken as necessary to maintain adherence to an established schedule.

NUVIS will ensure that project adheres to all applicable local, County, state and federal guidelines, codes and regulations including Title 24, ADA and all other accessibility requirements. All services will be performed in accordance with public laws, ordinances and regulations as applicable.

Our process of creating recreation/leisure facilities begins with the development of a program that states the requirements. The goal is to develop a strategic approach, provide alternatives, and develop a solution that integrates existing land use to provide for its optimum utilization.

Scope of Work

Schematic Design

The initial step in the preparation of documents would be to meet with the MRCA designated Project Manager and appropriate City representative(s) for the purpose of:

- understanding the expectations anticipated,
- developing a clear definition of design criteria and program objectives, and
- refining a detailed project schedule.

We believe the key to the success of this project is effective and thorough communication between the MRCA/City, interdepartmental representatives and design team to identify and resolve issues, thus allowing the necessary services to proceed quickly and efficiently. We understand that our responsibilities include not only answering the questions, but facilitating the process by determining what appropriate questions should be asked.

This task includes coordination and interface including, but not limited to, meetings, telephone conversations, memos, faxes, voice mail, and email with community stakeholders, applicable governmental agencies' departments, and project design team. Initially, the meetings will establish the guidelines and specific criteria to direct the team's efforts. Thereafter, these meetings will provide a continuum to receive information, clarify input, inform staff of progress and direction, generate information and allow the MRCA/City the opportunity to review and comment on draft concepts and recommendations. These concerns, needs or alterations will be addressed expeditiously, thereby keeping the progress of the work at a maximum.

Site Reconnaissance/Data Review

The NUVIS team will explore the team, documenting existing conditions via digital imagery and making notes about conditions that may benefit or affect the design solution. Reconnaissance will include visually identifying land uses, patterns, infrastructure, environmental conditions, site influences and visual impact. We will also evaluate potential impact on pedestrian, bicycle and vehicle circulation patterns, maintenance needs and relationship with the other recreational amenities, businesses and neighborhoods.

NUVIS will review existing documentation and plans including record drawings/as-built plans. The City will provide a topographic survey and geotechnical investigation/report. If existing data is not sufficient, NUVIS will notify the MRCA/City and provide written request for such data and/or services to obtain required data

Alternative Concept Plans

In collaboration with the MRCA and City, NUVIS will attend up to three (3) community meetings during the schematic design phase in order to gather community input and allow the community the opportunity to ask questions to the MRCA and the NUVIS team. We believe the key to achieving desired results is to maximize involvement as early in the process as possible. Interested and affected parties want to present input and have a 'voice' before decisions are made by others. The final schematic plan, progressed design development plans, and final design development plans will be presented to the community.

Using the information gathered during predesign meetings with the MRCA and public and site reconnaissance coupled with program criterion, NUVIS will develop three (3) alternative illustrative elevations/cross sections in plan-view format. These will illustrate elements such as major site elements, special pavement, signage/bases, general landscape character, and any water and/or recreational features which fit within the MRCA's stated budget. They will include both soft scape and hardscape elements. Image/theme boards will be developed including digital imagery of proposed plant and site materials to help convey the design intent.

As an *optional service*, Watearth will provide LID Stormwater Management Design for the Site including evaluation of data, site reconnaissance, conformance with regulatory requirements for discharge, soil hydraulic conductivity analysis, and schematic design plans.

Our primary objective of this phase is to arrive at a clearly defined, feasible concept and to present it in a form that achieves the MRCA's and community's understanding and acceptance. Although the design is not entirely represented, the schematic drawings can demonstrate basic spaces, scale, and relationship of components.

NUVIS will meet with the MRCA and community to present the three alternative concepts and image boards. NUVIS will present each alternative providing our professional recommendations for each. We will discuss each option in order to formulize an opinion to which alternative, or which elements from the alternatives would lead to a final preferred alternative.

As an optional service, Watearth would attend up to three community meetings during this phase to provide stormwater planning insight

Based on the elements desired and selected by MRCA, NUVIS would inform the MRCA if those elements would result in the need for additional professional services from other disciplines. Based on the approved plan, NUVIS will review with the City the permits and approvals that may be needed for construction. The final concept plan will be refined to presentation quality and presented to the community.

Deliverables

- Three alternative concept plans including material boards
- OPTIONAL: Schematic level LID Stormwater Management Plans
- Preferred final concept alternative in print and electronic formats

Design Development Plans

At this point, the design of the project site has been finalized and it is now a process of refinement of the MRCA approved schematic design. This is generally the initial stages of construction documents and the plans are created in AutoCAD. In addition to all the hardscape, softscape, and site amenity elements. This plan will also show the refined grading and drainage concept.

A materials board will be generated that presents the types of plant materials, hardscape materials, finishes, materials and colors that will be prepared to depict the character, color and texture of the hardscape, landscape and site amenity materials. The plant palette will be refined and image boards containing digital prints of intended plant and site materials will be included.

The drawings and designs are further refined and coordinated with our team. If additional design professionals are required, their plans are integrated at this phase. Sustainable design strategies will be further integrated and developed. Plans will be submitted at 50% DD level completion for agency review and plan check. Necessary corrections will be made to plans prior to progressing the DD level plans to 100%.

A statement of probable construction cost is developed to monitor the effect of the design solution on the budget.

Deliverables

- 50% DD Level Plans
- 100% DD Level Plans
- OPTIONAL: 50%, 100% DD Level LID Stormwater Management Plans
- Statement of Probable Construction Cost
- 24x24 Perspective Rendering
- Materials Board

Project Availability

In today's economic time, it's prudent to view the viability of a firm. There are an appropriate and manageable number of contracts open to the size of our corporation. Our design studios are divided into teams to more efficiently handle the workload. Due to the size and volume of our business, NUVIS is constantly looking for new and challenging projects that reflect our firm's capabilities, interests, and marketing strategies. Essentially, we felt it appropriate to put in the time and effort to prepare this response since providing a quality-of-life in the public realm is of great interest to NUVIS.

NUVIS is prepared to begin work immediately with appropriate resources allocated to meet the desired time frames and deadlines as they arise, without any known conflict of time or interest as of the date of this response to the Request for Proposal. Our subconsultant team has assured us that they too are available without any conflict in time, staffing or resources for the duration of the on-call contract.

Project Team

NUVIS

Based on the anticipated scope of work and our understanding of the project goals, NUVIS has assembled this highly qualified team of professionals.

Perry A. Cardoza, PLA, ASLA..... Principal in Charge, Community Facilitator

Award winning, innovative designs coupled with a passion to improvement environment defines Perry. He is willing to go the extra steps to ensure the success of a project. He is noted in the industry for his landscape architecture excellence, experience, leadership, and community facilitation and presentation skills. Perry will lead this design team in the development of plans which promote water quality at the site while ensuring that it is a space to be loved by the community for years to come. With a local office in Los Angeles just minutes from the project site, Perry is passionate and vested in seeing this project be successful. His ultimate desire is that not only is the land form transformed to improve the environment, but the land becomes an attractive usable space for rest and relaxation for local residents, nearby businesses/employees, and visitors to the LA River.

Linda Forde, LEED AP Project Manager, Landscape Architect

Linda has a special interest in sustainable landscape architecture design. Her projects have included specialized projects such as restoring the historical orchard and native garden at Rancho Los Cerritos; Aquarium of the Pacific Watershed Exhibit Garden, Green Roof (irrigated with grey water), Native Entry Garden and Retail Expansion; City of Yorba Linda Citywide Facility Water Use Reduction; Compton Creek Daylighting Study; Diamond Valley Specific Plan; Machado Lake restoration project; and Owens Lake Dust Mitigation, Bird Habitat and Land Art project. She develops plant palettes specific to a sites microclimate and uses research tools such as UC Davis' Water Use Classifications of Landscape Species to select plants appropriate for the bio-region, and grouping plants in order to maximize efficient use of irrigation water.

Jessie SalazarLandscape Architect

As a LA County resident, Jessie brings to the team extensive local landscape maintenance experience with a passion for landscape design. As a professional licensed landscape contractor and a landscape architect, he understands the steps necessary for a project to be successful from design to installation. He is fluent in Spanish and has 15 years of translation experience. His experience will be an asset in working with the local community to further NUVIS' understanding of their desires and needs and then being able to explain the design solutions and recommendations throughout the design process.



President



With NUVIS
since 1986

Licensure:
CA 3943

Education

BSLA California State
Polytechnic University,
Pomona 1986



PERRY CARDOZA, PLA, ASLA

Perry's ability to creatively express his ideas to agencies, councils, and community groups helps in developing a collaborative approach to recreation focused problem solving. He combines this ability with his ideology of landscape architecture to provide memorable design solutions, unique to each project location. Perry, along with the NUVIS team, considers sustainable solutions for all projects. With a focus on collaborative design, Perry seeks opportunities for capturing and treating storm water, creating habitat, specifying colorful, durable, and native water wise plants, and designing accessible solutions which incorporate best management practices.

Professional Affiliations

ASLA, Southern California Chapter, Trustee 2014-2017, President 2012-2013
AIA, Orange County Chapter
Far East Society of Architects & Engineers, Japan

Recognition

2017 ASLA National Honor Award - Owens Lake Land Art
2016 ASLA/SCC Award of Excellence & Honor Award - Owens Lake Land Art
2016 ASLA/SCC Merit Award - Hanson Property Habitat Restoration & Enhancement Plan
2014 ASCE (LA) Community Improvement Proj. of the Year - LA Brea Streetscape
2012 ASLA/SCC Merit Award - Owens Lake Dust Mitigation & Habitat Restoration
2007 ASLA/SCC Merit Award - The Arbor on El Toro
2007 ASCE Project Achievement Award - The Arbor on El Toro
2006 APWA Project of the Year - The Arbor on El Toro
2003 ASCE Project Achievement Award - Balboa Village

Veterans Park

Veterans Park Conservancy, West Los Angeles, CA
Perry served as principal in charge for conceptual designs, marketing exhibits, and construction documents for the renovation of a 10-acre healing and Veteran-centered park with 5 feature areas offering healing and recreational benefits. Phase 1, the Hollywood Canteen Amphitheater, incorporates sustainable solutions and unique succulent plantings around a multi-purpose event venue. Dates 2011- on-going

Olive Avenue, Sparks Street, Verdugo Avenue 5 Points Intersection Improvement

City of Burbank, CA
Perry serves as principal in charge for conceptual plan alternatives, design simulations, and construction documents for intersection realignment and landscape improvements for a challenging 5-points intersection including public plazas, crosswalks, street realignment, business interface, median improvements, and public art. Dates: 2017 - on-going

Machado Lake Restoration

CDM/Smith for City of Los Angeles, Department of Public Works, San Pedro, CA
Perry served as principal in charge for this native habitat protection, restoration, and passive park facilities surrounding Machado Lake including gabion bank stabilization, interpretive kiosks, fishing and viewing piers, pedestrian and maintenance gateways, native plantings, bioswales, picnic areas, new ADA restroom, fencing, and decomposed granite pathways. Dates: 2008-2017

Owens Lake Land Art, Trails & Habitat Protection

CDM-Smith for Los Angeles Department of Water & Power, Keeler, CA
Perry's dedication and vision for preserving habitat, providing safe public access, celebrating cultural resources, and meeting dust control requirements on Owens Lake (without increase in aqueduct water use) resulted in the newly opened Land Art Plaza and Trails. Offering 4 miles of interpretive recreation this 700-acre parcel is home to many species. Perry facilitated workshops and served as design director for conceptual plans, simulations, construction documents (including site layout, construction details, irrigation plans, water calcs, and planting), and construction observation. Dates: 2011-2016



Principal



With NUVIS
since 1998

Education

BSLA California State
Polytechnic University,
Pomona, 1998
Summa Cum Laude

USGBC LEED

Accredited
Professional, (2005)



LINDA FORDE, LEED-AP

Linda provides graphic expertise along with a special interest in the environmental and regionally responsive aspects of landscape architecture to the NUVIS team. Her responsibilities include project management, photographic simulations, LEED documentation, presentation exhibits, project research, creative strategizing, design guidelines, California native plant palettes, corporate IT support, marketing materials, and corporate website content and design. Linda's private family residence is a sustainable testing ground including a no-turf front yard, water reuse strategies, year-round edible garden beds, and native and adapted low water plants.

Other Professional Experience

SCC/ASLA Design Awards Programs/Presentations (2012 & 2014), Graphics (2010-2017)
CLASS Fund, Administrative Graphics & Marketing Materials Support (2004-2017)
NCC/ASLA Downtown San Francisco Walking Tour Guide, Graphic Design (2008)

Recognition

2017 ASLA National Honor Award, Owens Lake Land Art
2016 ASLA/SCC Award of Excellence & Honor Award, Owens Lake Land Art
2016 ASLA/SCC Merit Award, Hanson Property Habitat Restoration & Enhancement Plan
2012 ASLA/SCC Merit Award, Owens Lake Dust Mitigation & Habitat Restoration
2009 Certified Wildlife Habitat, Entry Demonstration Garden, Aquarium of the Pacific
2003 ASLA/SCC Merit Award, Los Angeles River Greenway, Studio City

Harbor City Greenway

CDM Smith for the City of Los Angeles, Dept of Public Works, Wilmington, CA
9.5 acre Proposition O funded native habitat protection and restoration for passive recreation park along Wilmington Drain including gabion bank stabilization, interpretive kiosks, pedestrian and maintenance gateways, native plantings, picnic areas, new ADA restroom, fencing, and decomposed granite pathways. Scope included conceptual presentation plans, design development exhibits, and construction documents.

Watershed Exhibit, Entry Garden & Retail Expansion

Aquarium of the Pacific, Long Beach, CA
Linda provided project management and technical document preparation of preliminary plans through construction documents for a LEED Platinum Watershed Exhibit/ Classroom Building site with native planting and a green roof irrigated by greywater from building sinks, a water-efficient entry demonstration garden; a Certified Wildlife Habitat, and a # Green Globe rated retail expansion. Dates: 2004-2013

Storm Drain Daylighting & Enhancement Feasibility Study

CWE for the Los Angeles & San Gabriel River Watershed Council, Compton, CA
Linda provided design and project management for plans, sections, design simulations, and planning document writing based on community input for establishing native plant communities within the earthen bottom daylighted creek channels and slopes for 3 locations along Compton Creek to create viable native habitat and healthy functioning ecosystems.

Los Angeles River Greenway Community Enhancement Plan

City of Los Angeles, Department of Recreation and Parks, Studio City, CA
Linda provided research, design, and document preparation for master planning of a 7-mile greenway along the LA River from Sepulveda Basin to Lankershim Boulevard. Plan includes recommendations for the use of the River right-of-way for bicycle, pedestrian, open space, native habitat restoration/preservation, and landscape enhancements. Scope included facilitation of public meetings and oversight committee workshops.

Los Angeles River Bikeway, Reseda, CA

City of Los Angeles, Department of Public Works
Linda provided native plant palettes, design development drawings, and planting plans for a phased 2-mile stretch along the Los Angeles River from Mason Avenue to Van Alden Avenue. 1.5 miles from including bike/multi-purpose trails, slope stabilization, bioswales, native plants, high-efficiency irrigation system, decorative gates, enriched paving, safety fencing, interpretive signage, and solar lighting. Dates: 2010-2012

JESSIE SALAZAR

With a passion for landscape architecture and extensive expertise in the landscape maintenance industry, Jessie assists the NUVIS team in the development of construction documents and presentation graphics for streetscapes, public parks, civic facilities, residential recreation sites, and open space projects. Jessie is highly motivated, establishing and continuing to manage his own company while obtaining his degree. Fluent in Spanish, Jessie has provided over 15 years of translation experience, and is proficient in AutoCAD and Land F/X, as well as graphic rendering programs.

With NUVIS since 2018

Education

BSLA
California State
Polytechnic University,
San Luis Obispo 2018

Liberal Arts AA
Santa Monica College
2014

Other Professional Experience

Salazar Landscaping, Founder and President, Dec. 2014 - Present
Cert. B Corporation through B Lab, June 2018
Cert. Social Enterprise, Los Angeles County, June 2018
Civic & HOA clients throughout Los Angeles County
Management of Team and Office Administration

Claremont Environment Design Group, Intern, Jun. 2015 - Sept. 2015

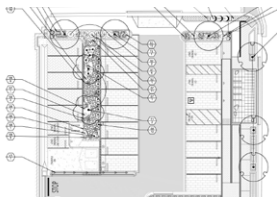
Professional / Technical

Licensed Landscape Contractor, State of California, License #1000327
Certified Qualified Pesticide Applicator, License # 147052
L.A.R.E. Accreditation currently in process



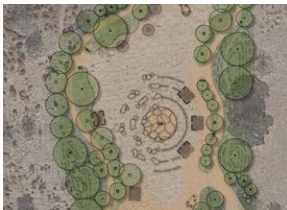
The Wall Las Memorias

The Wall Las Memorias Project, Los Angeles, CA
Jessie provides technical document preparation for renovations and site improvements to the existing AIDS Monument in Lincoln Park. Program includes enriched paving, interpretive stories, reflection spaces, low water planting, irrigation system improvements, protection of existing mature trees, and group gathering areas. DATES: 2016-2018



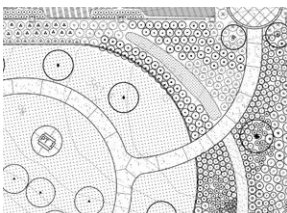
Hermosa Beach Parking Lot D Improvements

Adam Streeter Engineers for the City of Hermosa Beach, CA
Jessie provides technical document preparation for the redesign of a small municipal parking lot into a multi-benefit demonstration project including ADA improvements, enhanced lighting, bicycle corral, electric vehicle charging stations, storm water capture and retention, and drought tolerant landscaping. DATES: 2017- on-going



Northwest Open Space Park

City of San Juan Capistrano, CA
Jessie provides technical construction document support for a 3-acre historic preservation/interpretive park replicating a Juaneno village including cultural group area, amphitheater, pond, horse hitching area, trail, interpretive signage, parking lot, dog park access, permeable paving, shade structure, picnic benches, outdoor kitchen, and entry monument. Extensive collaboration and input from local representatives of the historic Juaneno people. Dates: 2014-2017



Veterans Park

City of Lake Forest, CA
Jessie provides technical construction document support for the renovation of a 5.3-acre passive park overrun by birds and waterfowl. Improvements include veterans memorial plaza celebrating local service members from all 5 branches of the military, California native garden, water-efficient irrigation, low-water use shrub plantings, pond water quality mitigation and enhancement, floating islands, walking trails, signage, bird deterrent programming, lighting and fencing.. Dates: 2017 - on-going

Subconsultant – Watearth

Founded in 2008 by Principal Engineer, Jennifer J. Walker, P.E., D.WRE, ENV SP, CFM, QSD, Watearth, an WBE/EBE/SBE firm, combines extensive and award-winning experience in storm drainage, green infrastructure/Low Impact Development (LID), stormwater management, water resources, and environmental engineering with core values of responsive and proactive communication, streamlined processes, and quality deliverables. Watearth's experience includes civil and environmental engineering, environmental assessments, stormwater, water quality and continuous simulation modeling, hydrology and hydraulic modeling, water supply, water resources, flood control, GI/LID, MS4 permit compliance, maintenance and monitoring plans, public outreach, and training. Watearth has worked on projects ranging in scale from statewide to watershed-scale to site-specific.

Watearth staff provide over 100 years of experience with stormwater management and permitting, water quality, hydrology/hydraulics, flooding solutions, and environmental planning (including design of construction phase and post-construction Best Management Practices (BMPs)). Our comprehensive knowledge and hands-on experience with all aspects of environmental and water resources allows us to "hit the ground running." We are committed to providing efficient and thorough analyses for the project while maintaining clear and frequent communication. Watearth provides services with an unparalleled knowledge of multi-functional, resilient, and sustainable infrastructure to deliver cost-effective long-term solutions to our clients.

Watearth's staff have extensive experience in the City and County of Los Angeles, including preparing hydrology and water quality technical studies for the LA Zoo Vision plan and EIR (involving CEQA and water quality impacts to the Los Angeles River). Storm drain experience includes Technical Support for Storm Drain Master Plan (Buena Park, CA), Buena Park Stanton/Orangethorpe Storm Drain CIP/LID Project to Solve Flooding (Buena Park, CA), Citrus Heights 3 LID Projects (Citrus Heights, CA), Mid Valley Public Works Stormwater Collection System (Los Angeles, CA), HEC-RAS 2D Watershed Model for Winding Meadow Village (Sacramento, CA), and more throughout the nation.

Additional experience working with Los Angeles institutions includes involvement on LA Sidewalk EIR, LA Venice Auxiliary Pumping Plant EIR, and the upcoming LA Stormwater Infiltration Project. Our work on those projects and others have included modeling and analysis of hydrology and water quality for Green Infrastructure for the EIR, determining impacts and proposing mitigation, performing green infrastructure continuous simulation and design storm modeling, evaluating hydrologic hazards such as liquefaction, mudflows, tsunami inundation and seiches; evaluating erosion and floodplain concerns, and preparing water supply assessments and water use demands for indoor water use and landscaping. Watearth has also worked on numerous planning projects, such as the California Statewide Phase II LID Sizing Tool, the San Francisco Bay Area Green Plan-It Master Plan and GI Tool, Aspen 1 of New Brighton Water Resources and Water Quality Master Plan in Sacramento, the City of Houston Regional Stormwater Master Plan, and other green infrastructure, storm drain, civil, landscape, and irrigation design projects.

Watearth has been the recipient of numerous awards for GI from ASCE, ACWA, and others. A few such awards include Los Angeles Section ASCE Honorable Mention for Outstanding Sustainability Project, American Public Works Association (APWA) Southern California Chapter Project of the Year – Stormwater Quality, and National Association of Flood & Stormwater Management Agencies (NAFSMA) Excellence in Communications Special Recognition.

Contact: Jennifer J. Walker, President, Watearth, Inc. jwalker@watearth.com, 213.248.4554

**JENNIFER J. WALKER, P.E., D.WRE, ENV SP, CFM, QSD
SENIOR STORMWATER AND DRAINAGE ENGINEER**

Walker, President of Watearth, Inc. brings nearly 25 years of extensive experience in water quality and flood control, green infrastructure, hydrology/hydraulics, stormwater, water resources, complex projects with multiple stakeholders, water supply, integrating water supply with stormwater and groundwater management, and solving water resources challenges at a regional level. Stormwater design experience includes hydraulic analysis, storm drain and pump station design. Walker is one of the first engineers to receive the Diplomate, Water Resources Engineer certification. Walker has a Masters in Civil Engineering, is a Certified Flood Plain Manager, and is a licensed Professional Engineer in multiple states. Walker's experience includes developing a California statewide Low Impact Development (LID) modeling tool for Phase II communities in collaboration with California State Sacramento's Office of Water Programs, which is funded by the State Water Resources Control Board. Walker serves as LID technical expert on the San Francisco Bay Area Regional Green Infrastructure Tool and the San Francisco Bay Area Green Plan-It Master Plan in collaboration with the San Francisco Estuary Institute. Walker is also Principal developer of a model on behalf of the Texas Water Development Board to evaluate water conservation Best Management Practices statewide.

- Advanced in integrating Flood Control, Water Supply, Water Quality, and Low Impact Development
- Ahead of the curve in integrating climate change adaptation and resiliency into projects and assessing cost-benefit
- Adept at solving complex and politically-sensitive issues
- Advanced user for 2D and Unsteady Flow hydraulic models
- Presented Integrated Water Resources Management to Address Climate Change Impacts on Water Infrastructure Short Course at EWRI Conference
- Highly sought-after national seminar instructor; trained tens of thousands through ASCE, CASQA, and FMA
- Guest lecturer for Re-inventing the Nation's Urban Water Infrastructure (ReNUWit) program at Stanford

REPRESENTATIVE NATIONWIDE STORMWATER RESOURCES COURSES (INSTRUCTOR)

- | | |
|---|--|
| • Advanced Low Impact Design | • SWMM LID Modeling Bootcamp |
| • Advanced Detention Routing | • Stormwater Quality BMPs |
| • Analysis of Green Infrastructure | • Sustainable Sites for O&M for Green Infrastructure |
| • Bioretention and Rain Gardens | • Rainwater Harvesting |
| • Greywater Systems | • LEED Sustainable Stormwater Hydrology |
| • Integrating Stormwater Reuse into LID | • HEC-RAS Modeling Bootcamp |

EDUCATION, LICENSES, AND CERTIFICATIONS

PE. State of California. #C77079. Exp 31-Dec-2018.
 ENV SP. Institute for Sustainable Infrastructure.
 D.WRE. American Academy of Water Resource Engineers. Exp 1-Dec-2018.
 CFM. Association of State Floodplain Managers (Texas Floodplain Management Association). #0848-05N. Exp 1-Dec-2018.
 QSP/QSD. California Stormwater Quality Association.
 Permaculture Designer's Certificate. Sustainable Development and Water. Permaculture Research Institute.
 MS. Civil Engineering c. Water Resources. University of Houston.
 BS. Civil Engineering c. Environmental and Water. Kansas State University.
 Management Development for Entrepreneurs. UCLA Anderson School of Management.

REPRESENTATIVE PROJECTS

- Los Angeles Zoo Master Plan and Vision Plan EIR (Los Angeles, CA).
- UCLA-Olive View Medical Center Master Plan EIR (Los Angeles, CA).
- LAC+USC Medical Center Master Plan EIR (Los Angeles, CA).
- LA Metro Water Conservation & Sustainability Services (Los Angeles, CA).
- LA Metro LAX Crenshaw Extension Stormwater Services (Los Angeles, CA).
- San Gabriel Valley Water Company SWPPP (San Gabriel Valley, CA).
- Cal Poly San Luis Obispo Water Resources Master Plan: Technical Studies for EIR, Water Supply Assessment, Wastewater Feasibility, and Reclaimed Water Facility Impacts Evaluation (San Luis Obispo, CA).
- Buena Park Stanton/Orangethorpe Storm Drain CIP/LID Project to Solve Flooding (Buena Park, CA).
- Nuview USD 100% Stormwater Infiltration Project (Riverside County, CA).
- Fontana USD DROPS Low Impact Development and Design Project (Fontana, CA).
- 24-Acre Manufactured Gas Plant Site Remediation (Vallejo, CA).
- Opterra Energy Services Amador County SWPPP (Jackson, CA).
- MacArthur Boulevard Stormwater Pollution Prevention Plan (SWPPP) (Oakland, CA).
- Westborough Park Stormwater Pollution Prevention Plan (SWPPP) (San Francisco, CA).
- Opterra Energy Services Irrigation Design and SWPPP Project, Plomosa Park (Fremont, CA).
- LID and Water Quality Master Plan for Aspen 1 of New Brighton (Sacramento, CA).

Leader in Integrated Water Resources

JENNIFER LUNDBERG, CEP, MES, CFM

SENIOR ENVIRONMENTAL PLANNER, COMMUNITY OUTREACH SPECIALIST

Lundberg is a Certified Environmental Professional (CEP) and Certified Floodplain Manager (CFM) with over 25 years of experience in the environmental field. She has provided project management and technical assistance on a variety of projects including project management and leading technical sections of Mega Transportation projects, Environmental Impact Statements (EIS), sole author of several Environmental Assessments meeting requirements for different federal agencies including HUD and NRCS, managing architects and engineers in multi-state projects, and environmental documents meeting local, state, and federal requirements. She has authored technical sections including hazardous materials, soils and geology, prime farmland, land use and relocation, surface water and floodplains, hydrology and water quality, wetlands, and was the developer of the Washington State Department of Transportation template for Indirect and Cumulative Effects. As an expert in the governmental permitting process, Lundberg has a broad knowledge of federal, state, and local environmental laws, regulations, and policies in Texas, Washington, Oregon, and Alaska. Lundberg's experience includes permitting for federal and private marine projects, including shoreline protection, commercial dock facilities, cruise ship terminals, and small boat harbors. Permit types include Clean Water Act Section 401 and 404, River and Harbors Act Section 10, NPDES permits, shoreline development permits in multiple states, and Coastal Zone Management reviews. Lundberg has specialized training in wetland delineation including experience in Washington, Oregon, and Alaska with initial training provided over a three month period by the Washington State Soil Scientist. Lundberg has significant experience in project management and field sampling of contaminated sediment and soil sampling in Washington, Oregon, and Alaska as well as extensive experience conducting Phase 1 & 2 ESAs. Other project types that she has worked on are roads and bridges, utilities, and educational and religious building sites.

EDUCATION, LICENSES, AND CERTIFICATIONS

Masters of Environmental Studies, The Evergreen State College, Olympia, WA.

B.S. Environmental Science, Huxley College, Western Washington University, Bellingham, WA.

Certified Environmental Professional, Academy of Board Certified Environmental Professionals, 2006.

Teacher Certification, Lone Star College 10-week certification, 2017.

Certification Review Board member, Academy of Board Certified Environmental Professionals, 2011-present.

AWARDS

Richard J. Kramer, CEP Memorial Award for Environmental Excellence. Academy of Board Certified Environmental Professionals. 2016.

National Association of Environmental Professionals, President's Service Award. 2011,2012, 2015, 2017

Boy Scouts of America, Wood Badge Beads. 2017

PUBLICATIONS AND PRESENTATIONS

Technical Letter Report Regarding the San Francisco-Oakland Bay Bridge East Span Project Noise Energy Attenuation Mitigation

Peratrovich, Nottingham & Drage, Inc. Anchorage, Alaska. 27 p. (white paper cited by NOAA Fisheries for sound attenuation requirements for pile driving and related underwater construction projects). Christopherson, A. and J. Wilson. 2002.

Module 2 – Spill Prevention Plan Reviewer's Course

Washington State Department of Transportation, 2000. Developed training, course materials, trained other instructors, and lead trainer for WSDOT engineering staff. J. Wilson

Module 1— Introduction to Spill Prevention

Washington State Department of Transportation, 1996 and revised 1999. Co-developed training and course materials with Emcon, trained other trainers, and provided training to contractors and WSDOT staff. J. Wilson

REPRESENTATIVE PROJECTS

- SR 520 Bridge Replacement and HOV Project Draft EIS, Washington State Department of Transportation (Seattle, WA).
- LA Metro Water Conservation & Sustainability Services (Los Angeles, CA).
- BHP Billiton Bulk Terminal and Port, Rescan Environmental Services, Ltd (Various Locations, WA).
- Los Angeles Zoo Vision Plan EIR (Los Angeles, CA).
- Cal Poly San Luis Obispo Water Resources Technical Studies for EIR, Water Supply Assessment, Wastewater Feasibility, and Reclaimed Water Facility Impacts Evaluation (San Luis Obispo, CA).
- Texas Water Development Board Municipal Water Conservation Planning Tool (Statewide, TX).
- Fontana USD DROPS Low Impact Development and Design Project (Fontana, CA).
- Alaskan Way Viaduct and Seawall Replacement EIS, PB Americas, Inc (Seattle, WA).
- Olson Marine, Inc Multimodal Facility (Ketchikan, AK).
- Los Angeles Sidewalk Program EIR (Los Angeles, CA).
- Waterfront Seattle (Seattle, WA).

ADAM SUSSKIND

COMMUNICATIONS, EDUCATION, AND INTERPRETIVE SIGNAGE SPECIALIST

Susskind is a Communications Specialist with seven years of combined experience in the technology service, wholesale, and A/E/C industries. His work includes full start-to-finish rebranding efforts to radically transform the visual impact of marketing materials, with the intent of aligning brand-identity with vision for growth; the quality of his branding products accurately reflects his client's aim for upward development. He has worked on comprehensive branding specifications, websites, databases and interfaces, and the gamut of marketing collateral, including printed materials such as brochures, pamphlets, guides, rack cards, retractable banners, large format signage, and promotional flyers.

Susskind has created sales presentations, web content, and proposal material. He produces layouts, graphics, photography and videography, and written copy. Proposal materials have included cover letters, project profiles, technical approaches, resumes, organization charts, schedules, rate sheets, and more.

His fundamental process for layout work is such that white space is used to appropriately draw the eye the most important information first, while focusing both on client needs and the target audience. Susskind has extensive experience preparing benchmark reports, analyzing the techniques which make certain design trends successful, implementing them in his work as appropriate.

Susskind is a highly practiced technical writer and editor. He approaches all projects with a keen eye for the written word.

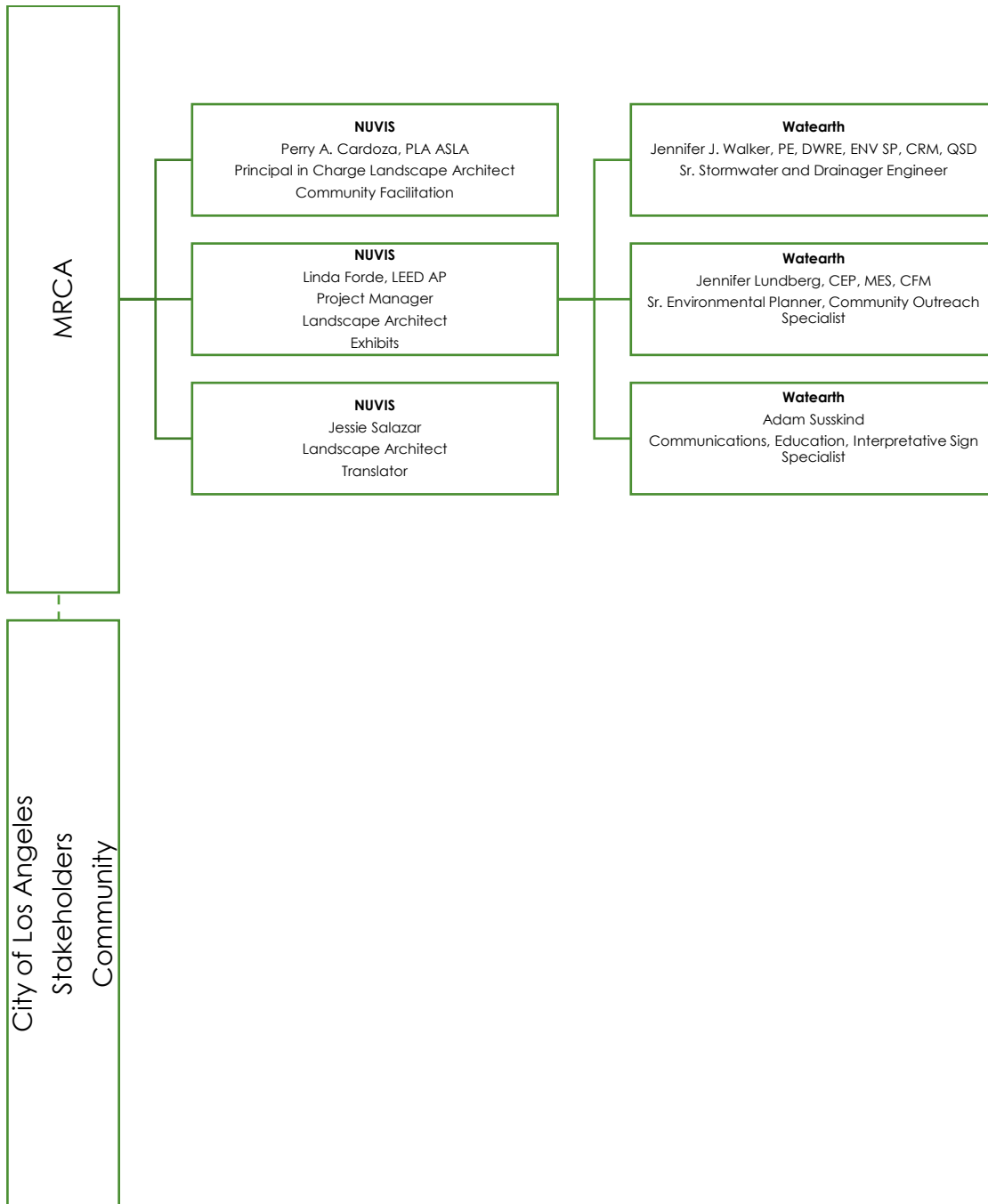
EDUCATION, LICENSES, AND CERTIFICATIONS

B.A. Technical and Professional Writing (m. Computer Science) (Summa cum Laude), Ithaca College, Ithaca, NY

REPRESENTATIVE PROJECTS

- LA Metro PCP Interpretive Signage (Los Angeles, CA).
- Newsletter Redesign (Circleville, NY).
- Website Redesigns (New York, NY).
- Brochures Redesign (Circleville, NY).
- Website Overhaul (Circleville, NY).
- Database Updates (Circleville, NY).
- Career Fair Materials (Circleville, NY).
- Proposal Materials (Circleville, NY).
- Graphics and Layout Instruction (Ithaca, NY).
- Database Design (New York, NY).
- Trade Show Signage (New York, NY).
- Mass Email Layouts (New York, NY).
- Grant Writing (Ithaca, NY).
- Portrait and Project Photography (Circleville, NY).
- Project Promotional Videography (Circleville, NY).
- Postcard and Flier Mailings (New York, NY).
- Product Photography (New York, NY).
- West West Side Music Video Production (New York, NY).

Organizational Chart



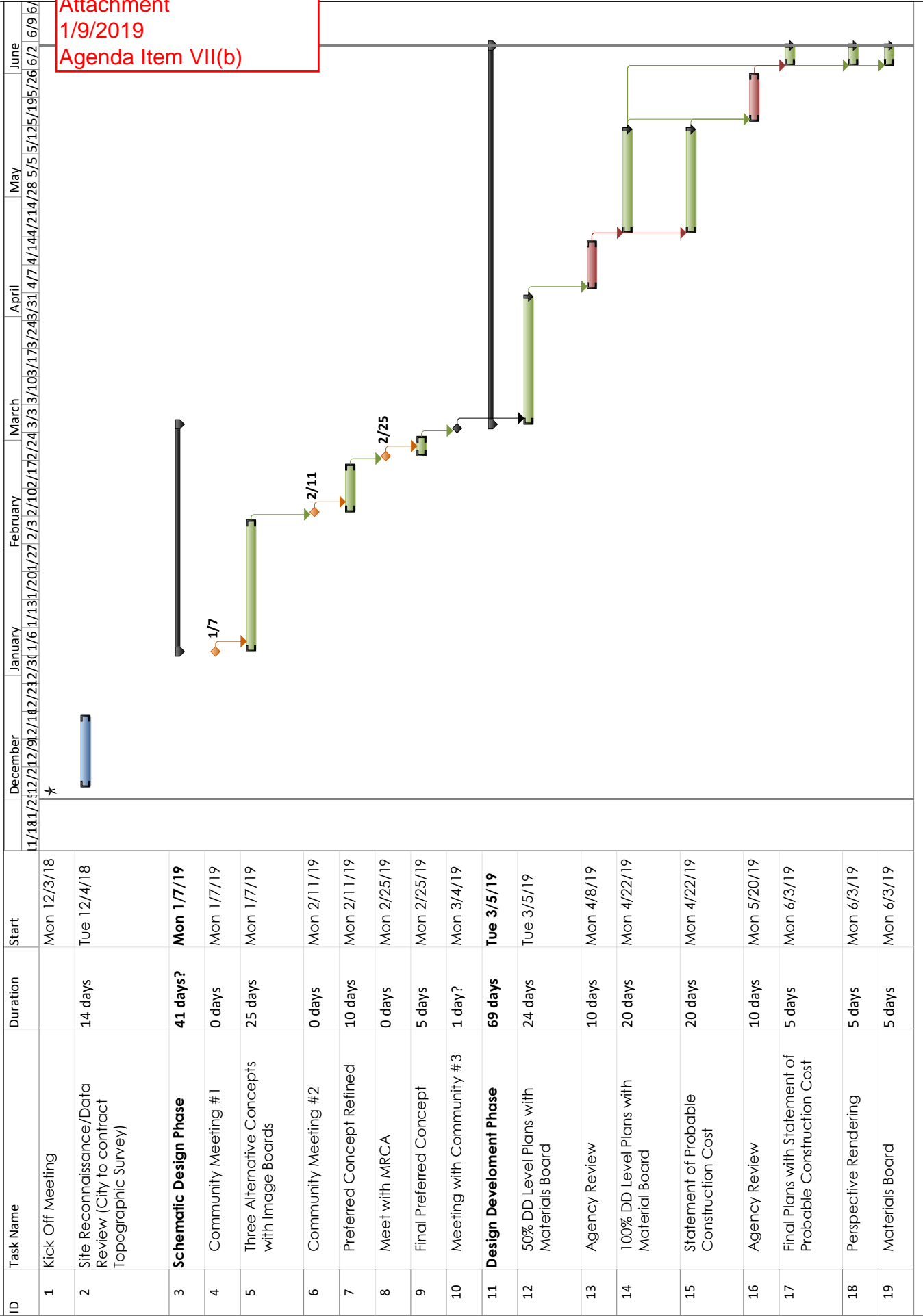
Fee Proposal

The NUVIS team has thoroughly reviewed the project and we are excited at the opportunity to collaborate with the MRCA and the City in developing a park space which meets the requirements of Proposition 1 while creating opportunities for the community to interact with their environment in a safe and meaningful way.

NUVIS' corporate mission statement is to "create responsible outdoor venues that provide opportunities for interaction and exhibit dramatic memorable results from texture, form, color, and pattern – inspiring people-oriented experiences". NUVIS' Los Angeles office is located a few blocks from the project site. NUVIS is vested in bettering our local community. We are prepared to offer our professional services at a reduced rate as a philanthropic measure to give back to the community. **While we have reduced hours on key tasks, NUVIS is prepared to give our full attention to the project.**

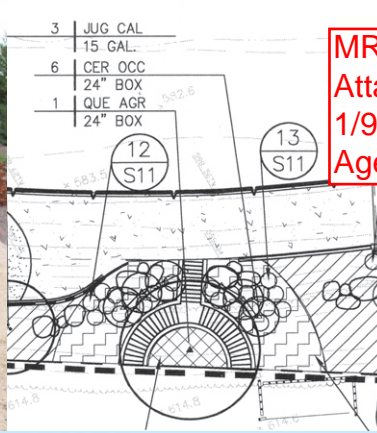
MRCA						
Confluence Park Phase 2						
NUVIS Fee Schedule						
Task & Description	Sr Prin \$200	Princ \$170	Sr. Assoc \$155	Assoc \$140	LCAD \$130	Total \$
Task 1: Schematic Design Phase						\$16,850
Kick off Meeting with City	2			2		\$680
Site Review/Data Review		2		4	4	\$1,420
Three Community Meetings	1	6		6	6	\$2,840
Three alternative Concept Plans with Image Board(s), Preliminary Interpretative Signage	1	12		24	24	\$8,720
Meeting with City	1		4			\$820
Final Preferred Concept Plan	1	4		4		\$1,440
Code/Permit Analysis			6			\$930
Task 2: Design Development						\$26,170
50% DD Plans	1		6	18	8	\$4,690
Plant Palette	1	5				\$1,050
Materials Board	1					\$200
100% DD Plans	1		32	40	40	\$15,960
Statement of Probable Construction Cost	1		5			\$1,315
Colored Perspective of Project Suitable for Printing 24x24		8				\$1,360
Design Team Meetings with City (3)	1		9			\$1,595
Task 3: Project Management						\$2,540
DTGC		4	12			\$2,540
Project Management						\$0
Direct Project Expense Allowance						\$0
<i>Total Hours</i>	\$12	\$41	74	98	82	
<i>Total Cost</i>	\$2,400	\$6,970	\$11,470	\$13,720	\$10,660	
TOTAL PROFESSIONAL FEE PROPOSAL						\$45,560
OPTIONAL:						
LID Stormwater Management Design (Schematic/DD) including PM fee						\$15,495
Civil Engineer attend Community Meetings (3) (2 persons)						\$9,755
Watearth Educational Materials/Interpretative Sign Content Assist						\$4,745

**MRCA
Confluence Park Phase 2
NUVIS Proposed Schedule**



MRCA
Attachment
1/9/2019
Agenda Item VII(b)

Since 1971, NUVIS has provided the full spectrum of professional landscape architectural services, from creative idea generation to graphic conceptualls through construction documents and field observation, for a multitude of private developers, design professionals, and public agencies.



MRCA
Attachment
1/9/2019
Agenda Item VII(b)

