



Natural Park at Ramona Gardens Housing Development Big Nature | La Naturaleza En Grande



© SWA
Artist rendering of Arroyo Perspective

Combining Ecosystem Science, Engineering and Community Needs

Reflecting community priorities, the Natural Park will transform four acres of underused land between residences at Ramona Gardens and a 15-lane freeway corridor into a beautiful, green 'Nature in the City' open space park, including an innovative Anti-Pollution Green Buffer.

Nature-Based Approach Benefits People and the Environment

The Natural Park at Ramona Gardens provides a 'Nature in the City' park model for public housing developments throughout California.

- Reduces air and noise pollution
- Improves public health
- Improves local water sustainability
- Promotes climate change resiliency
- Creates green open space
- Restores natural habitats

Project Team and Partners



Ramona Gardens
Residents Advisory Council

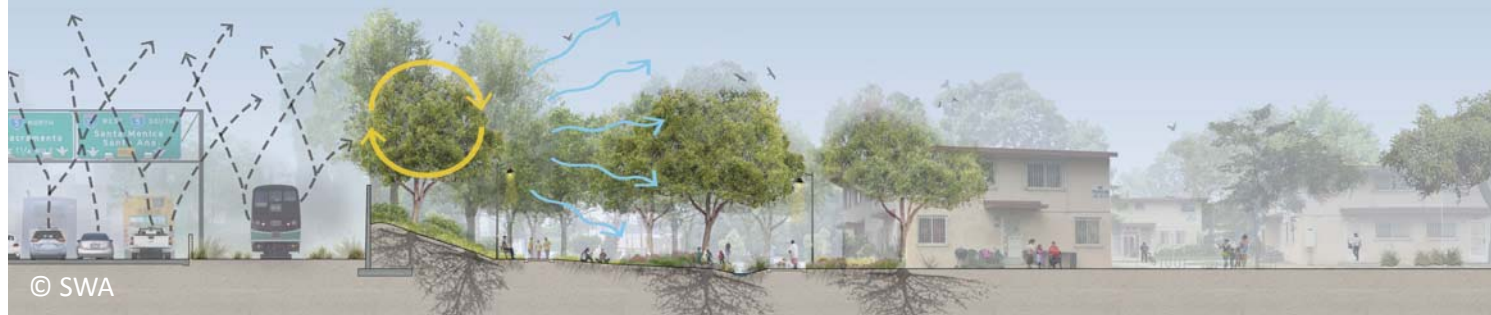


L.A. City Councilmember
José Huizar



Anti-Pollution Green Buffer

Hills, Trees, Habitat, Sound Wall



Air Pollutants from
15 Lane Freeway Corridor

Uptakes air pollutants
Reduces greenhouse gases

Provides shade
Recycles urban runoff

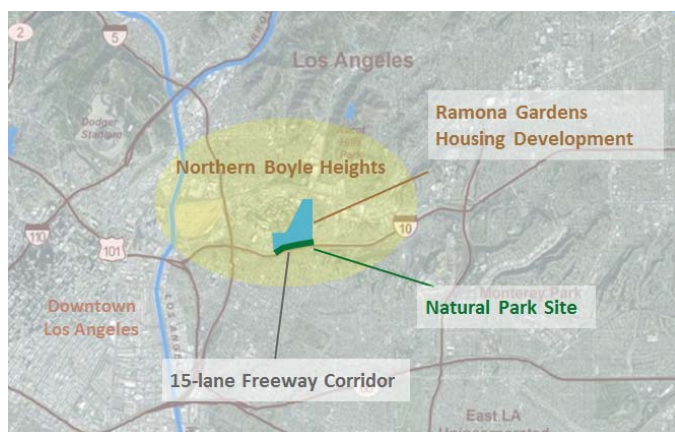
Ramona Gardens
Housing Development

Community Priorities & Natural Park Features

- Natural places for children and families to play
- Native trees and plants
- Walking fitness trail
- Plaza for swap meet and community use
- Seating and shade structures
- Recreation courts and exercise steps
- Murals and interactive sculpture



Legacy LA led outreach to identify community priorities.



Ramona Gardens is home to 1,800 residents, including 700 children.

Project Location

'Big Nature' Can Help Reduce Pollution

Located next to a 15-lane freeway and transit corridor, Ramona Gardens is one of the most polluted communities in California and is designated as severely disadvantaged (CA Environmental Protection Agency).

The Natural Park will address health problems that disproportionately affect residents of Ramona Gardens and Northern Boyle Heights.

By providing an Anti-Pollution Green Buffer and opportunities for natural outdoor play and walking, the Natural Park will address health problems that disproportionately affect residents of Ramona Gardens and northern Boyle Heights.

Funders



THE ROSALINDE AND ARTHUR
GILBERT FOUNDATION

