

"There were SO many firsts on our camping weekend! Hosted by the very amazing team at the Community Nature Connection, talented naturalists offered outstanding support as they guided youth ...Most important were the lifetime memories and bonds created. As one young camper said "I'm so thankful for everything and can't wait to come back!"."

- Peace4Kids.

YOUTH CAMP
&
PUBLIC
CAMPGROUND



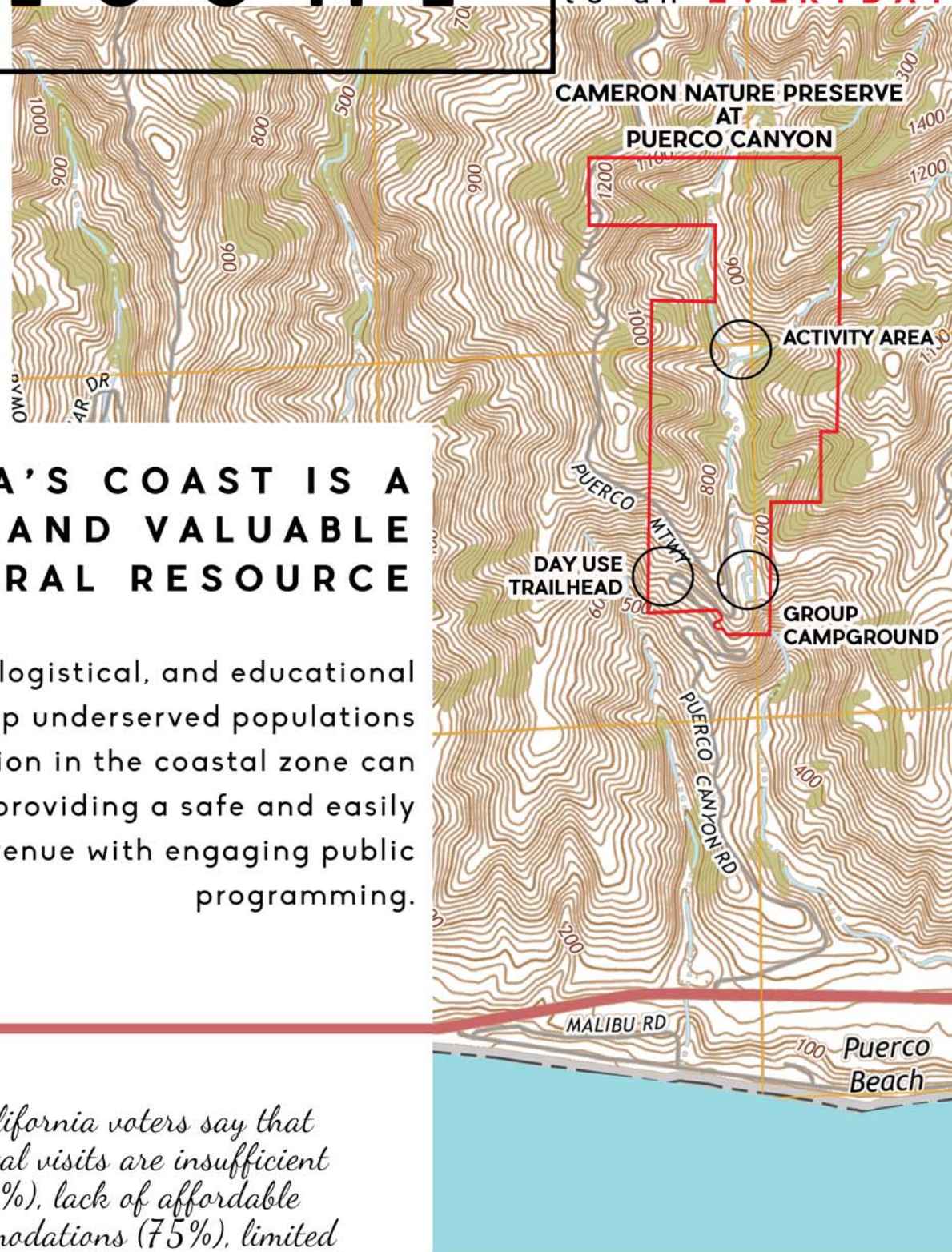
A Project of: Mountains Recreation and Conservation Authority
Community Nature Connection
Los Angeles County Supervisor Sheila Kuehl

Funded by: California Coastal Commission
Santa Monica Mountains Conservancy
State Coastal Conservancy

CAMERON NATURE PRESERVE AT PUERCO CANYON

W E L C O M E

to an **EVERYDAY**



ACTIVITIES

CALIFORNIA'S COAST IS A DISTINCT AND VALUABLE NATURAL RESOURCE

The economic, logistical, and educational **barriers** that keep underserved populations from public recreation in the coastal zone can be **eliminated** by providing a safe and easily accessible venue with engaging public programming.

A majority of California voters say that obstacles to coastal visits are insufficient public access (62%), lack of affordable overnight accommodations (75%), limited public transit options (68%), and the high cost of parking (78%).

*source:
UCLA Institute of the Environment and Sustainability, 2016 statewide poll*



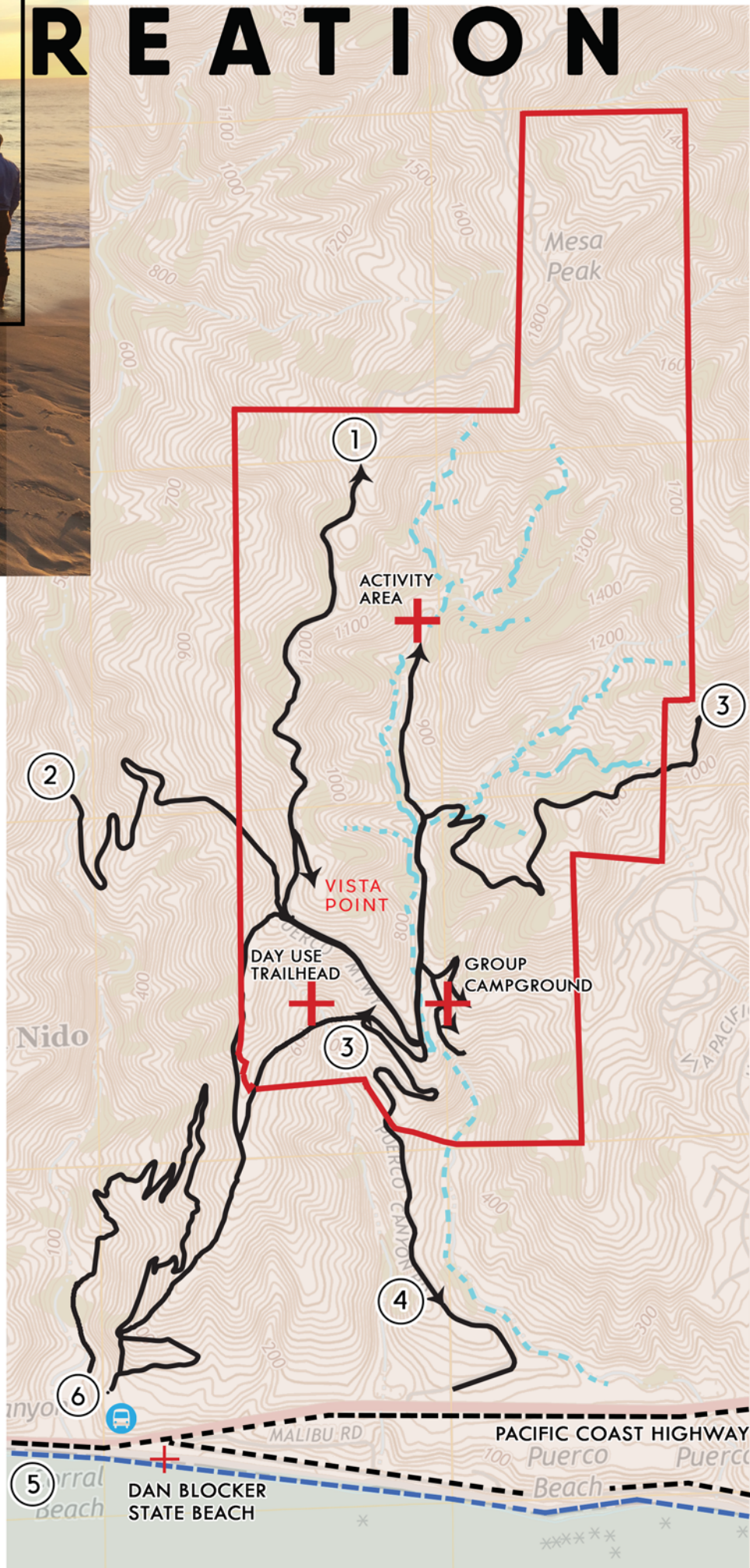
Cameron Nature Preserve is located in the midst of the best recreational opportunities in the Santa Monica Mountains and coastal lands. Direct connections to the Backbone Trail and the Coastal Slope Trail offer access to **hikers, mountain bikers and equestrians**, and the California Coastal Trail and Pacific Bike Route are a 1.25-mile trip down to PCH. Dan Blocker State Beach is 0.5-mile up the coast.

A 3.2-acre graded site at the back of Puerco Canyon offers a secluded area for **team building activities and environmental studies**. The parking lot will accommodate buses and a nearby group seating area can be used for all-ages **public programming**. Accessible parking, picnic tables and restrooms will make all visitors feel welcome.



RECREATION

- 1 TO BACKBONE TRAIL
- 2 TO CORRAL CANYON PARK
- 3 COASTAL SLOPE TRAIL
- 4 PARK ENTRANCE
- 5 CA COASTAL TRAIL
CA PACIFIC BIKE ROUTE
- 6 SARA WAN TRAILHEAD AT CORRAL CANYON PARK



experience.



CONNECTIVITY

↑
DISTANCE TO 101 FRWY
12 MILES / 20 MINS



→
DISTANCE TO SANTA MONICA
15 MILES / 30 MINS

ALL CALIFORNIANS SHOULD HAVE THE PRIVILEGE OF EXPERIENCING A MOUNTAIN TO SEA CONNECTION.

Apart from logistical and transportation issues, a significant barrier for urban residents enjoying our parklands and beaches is not knowing where to go and how to enjoy these lands safely. The MRCA and Community Nature Connection provide group programs with camping gear, supplies, transportation, and a natural resources curriculum so that families can overcome these obstacles.

I D E A

MRCA proposes to create a group campground and day-use trailhead to open this spectacular property for public recreational use.

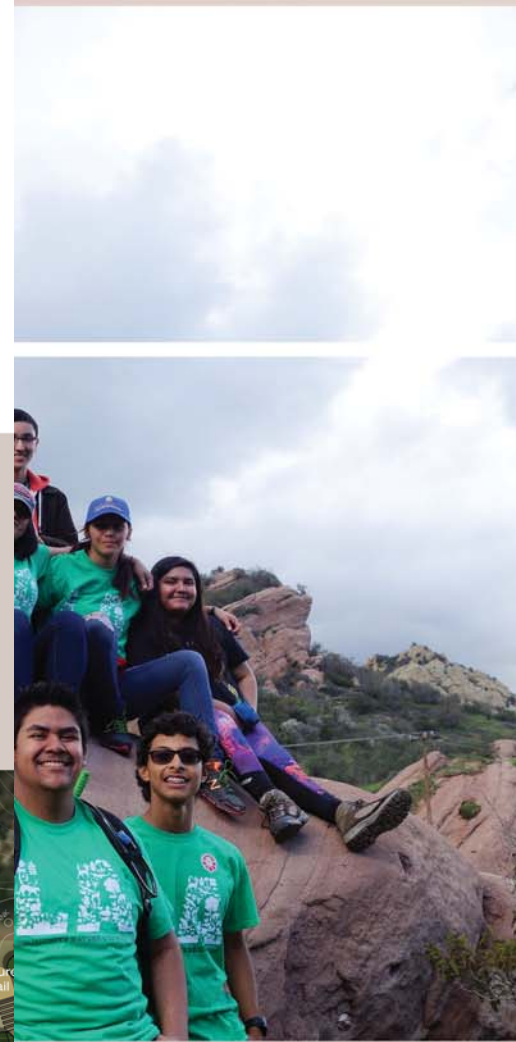
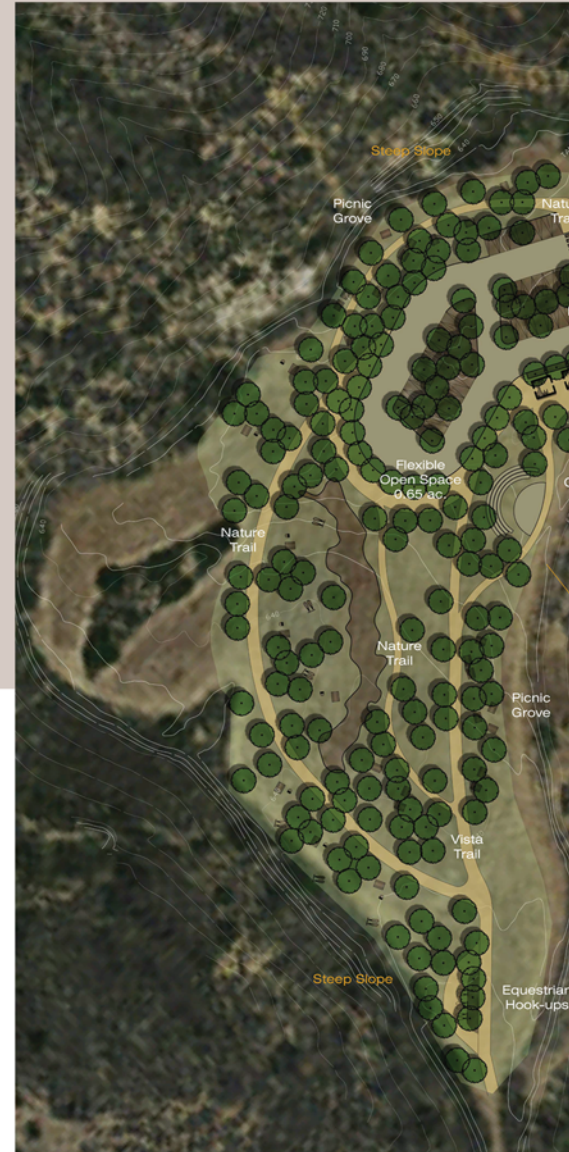
The primary purpose of these low-impact improvements is to serve disadvantaged populations throughout Southern California by introducing them to California's coastal resources and recreational opportunities.

The general public will also benefit through shared use of the group campground, maximized public access, and the demonstration of sustainable use of coastal resources. The campground can be made available to other groups (such as scout troops, churches, service organizations, schools, etc.) and the general public by reservation when not in use by our community partners.

"The activities and team building skills and tools you provided for the kids to take with them are invaluable. I am certain this will be something they never forget! The smiles on their faces throughout the day and listening to them talk about these new experiences was precious."

*-September Sucher, Camp Director
Happy Trails for Kids*

DAY USE TRAILHEAD 4.9 ACRES



NEERS

CNC is a non-profit entity that provides environmental education and many interpretation services to underserved populations. CNC focuses on providing programs that focus on increasing access to parkland to underserved populations, youth development, job training for urban youth of color, transportation to any of our parks from disadvantaged communities, and other programs and services that have been nationally recognized.

ESTABLISHED . 1985

The Puerco Canyon project is a joint initiative of Mountains Recreation and Conservation Authority (MRCA) and Community Nature Connection (CNC). Together, MRCA and CNC have a demonstrated history of providing outdoor and camping experiences to groups and organizations that otherwise do not have access to public lands, and a **proven track record of championing public access to the Santa Monica Mountains and coastal lands**. The in-house expertise in land management, educational and interpretive programming, full Ranger and fire services, and project development to completion give MRCA and CNC a distinct advantage to successfully complete such an ambitious project.

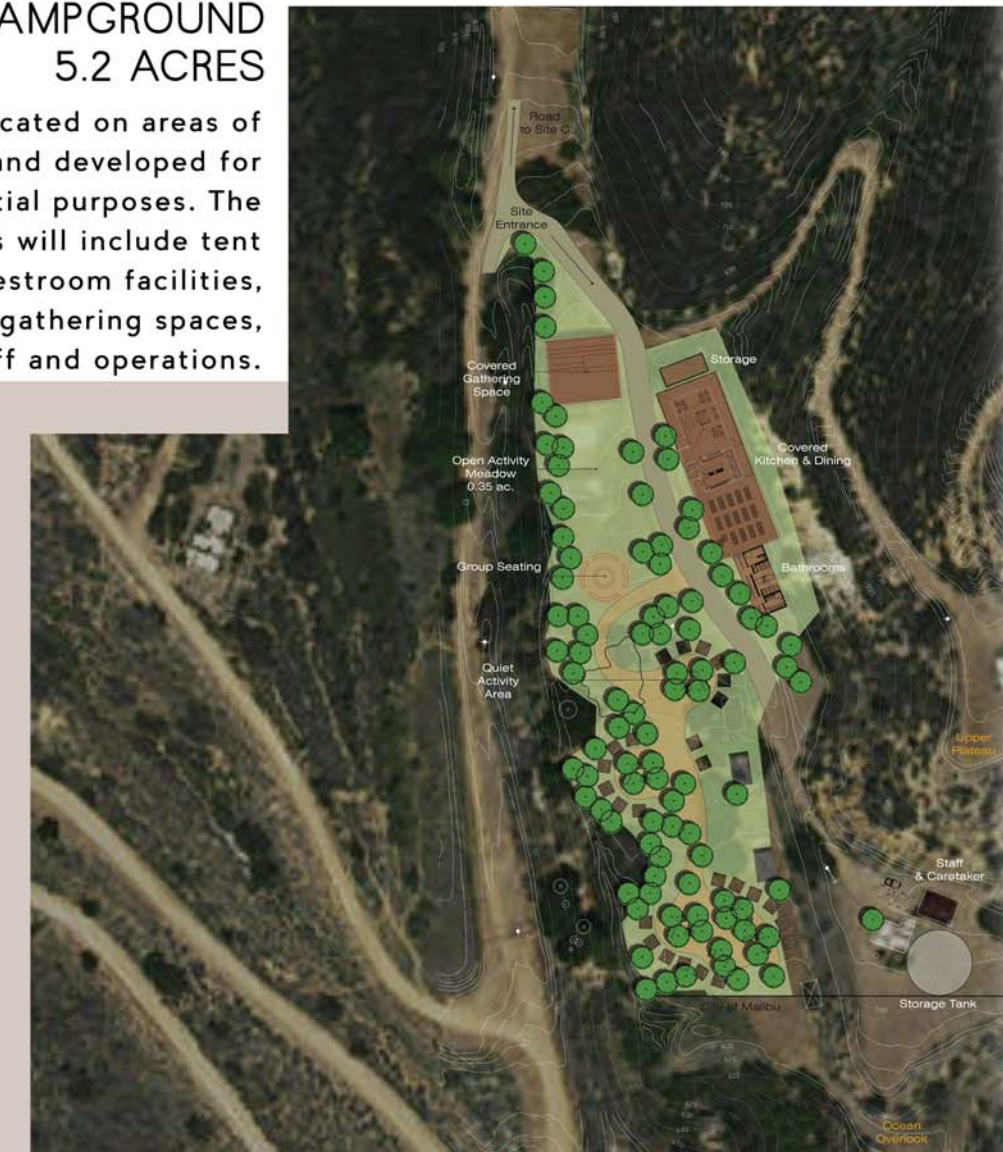
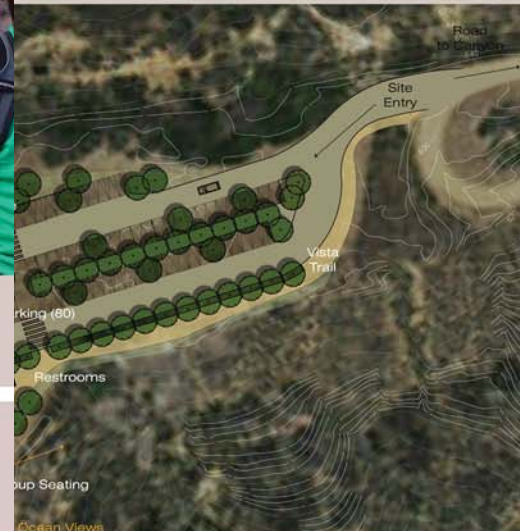


PART

The **MRCA** is dedicated to the preservation and management of local open space and parkland, watershed lands, trails, and wildlife habitat, and the creation of new parks in urban Los Angeles. The mission of MRCA is to complement the work of other agencies protecting land in the Southern California mountains by using its unique abilities to acquire and improve open space and parkland, afford environmental education opportunities, and provide stewardship for a wide variety of public park and open space amenities.

GROUP CAMPGROUND 5.2 ACRES

The group campground will be located on areas of the property previously graded and developed for agricultural and residential purposes. The campground improvements will include tent camping sites, shower and restroom facilities, kitchen and dining areas, group gathering spaces, and facilities to support park staff and operations.



The public trailhead will be located on a previously graded pad that will be accessible by an improved De Bell Ranch Road. Day-use facilities will include parking for up to 80 cars, restrooms, picnic groves, group program seating, trail connections, basic equestrian amenities, and native plant restoration.

Working closely with Los Angeles County Department of Children and Family Services (DCFS), the camp will also serve as a **respite for children in the foster care system** by providing a safe and enjoyable place to meet friends, have new experiences and benefit from the communal experience that is camp.

S A F E

The MRCA acquired the 703-acre Cameron Nature Preserve at Puerco Canyon in 2014. The property is an **outstanding example of the Mediterranean biome** with a range of plant communities including chaparral, coastal sage scrub, native grasslands, and oak woodlands.

Situated between the 1,000-acre Corral Canyon Park and 8,000-acre Malibu Creek State Park, the site abuts numerous public lands and is an unparalleled opportunity to introduce more people to the coastal resources of the Santa Monica Mountains.



O P E N

Outdoor education camp provides an opportunity for children to experience nature while also supporting healthy recreation, nature skills development, team building and leadership skills. At Puerco Canyon, children **hike trails, learn about the stars** and experience other **rights of childhood**, most for the first time.



"...we all saw the wonderful potential for this property and what a meaningful opportunity this will be for our families, our community and our department."

*- Daniel Svedas, M.S.W.
Los Angeles County
Dept. of Children & Family Services*



S A N C T U A R Y

A PLACE TO RETURN TO

Puerco Canyon is an **ideal site for improved public access** due to both its proximity to the coast and other public parkland, and large areas of previously disturbed and developed land. Easy connections to the Backbone Trail and Coastal Slope Trail add to the regional accessibility.