

LECHUZA BEACH
PUBLIC ACCESS
IMPROVEMENTS

West Sea Level Drive

Malibu, California

A PROJECT OF:
**Mountains Recreation
and Conservation
Authority**

570 West Avenue 26, Suite 100
Los Angeles, CA 90065
(323) 221-9944

SITE DESIGN:
**Mountains Recreation
and Conservation
Authority**

570 West Avenue 26, Suite 100
Los Angeles, CA 90065
(323) 221-9944

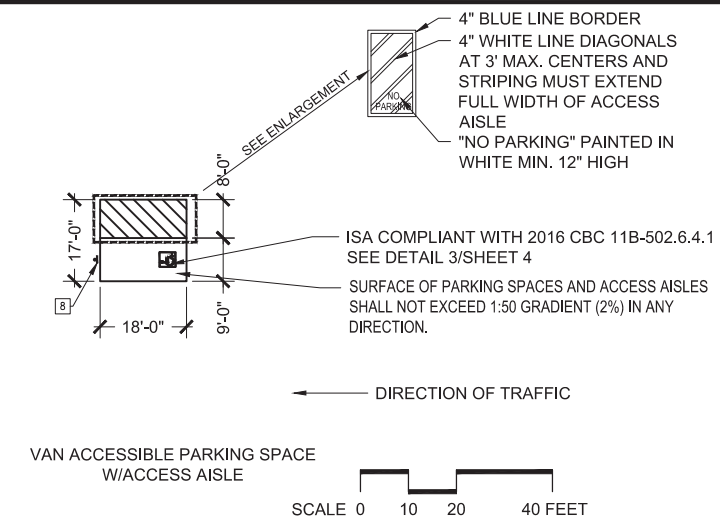
SURVEYOR:
Land & Air Surveying
22741 Pacific Coast Highway
Suite 400A
Malibu, CA 90265
(310) 456-9381

NOT FOR
CONSTRUCTION

ISSUED:
6/12/2012, 3/15/2013
EDIT 9/11/2013
5/2/2014; 5/15/2015
7/23/2015; 8/9/2016
2/7/2017; 7/14/2017
8/2/2018; 8/23/2018
DRAWN: CM
CHECKED: JT
PROJECT: 24.404.444.3221.261
SCALE: As noted

WEST
SEA LEVEL
D
Project Area II
Project Elements
II-1 to II-5
2 OF 4

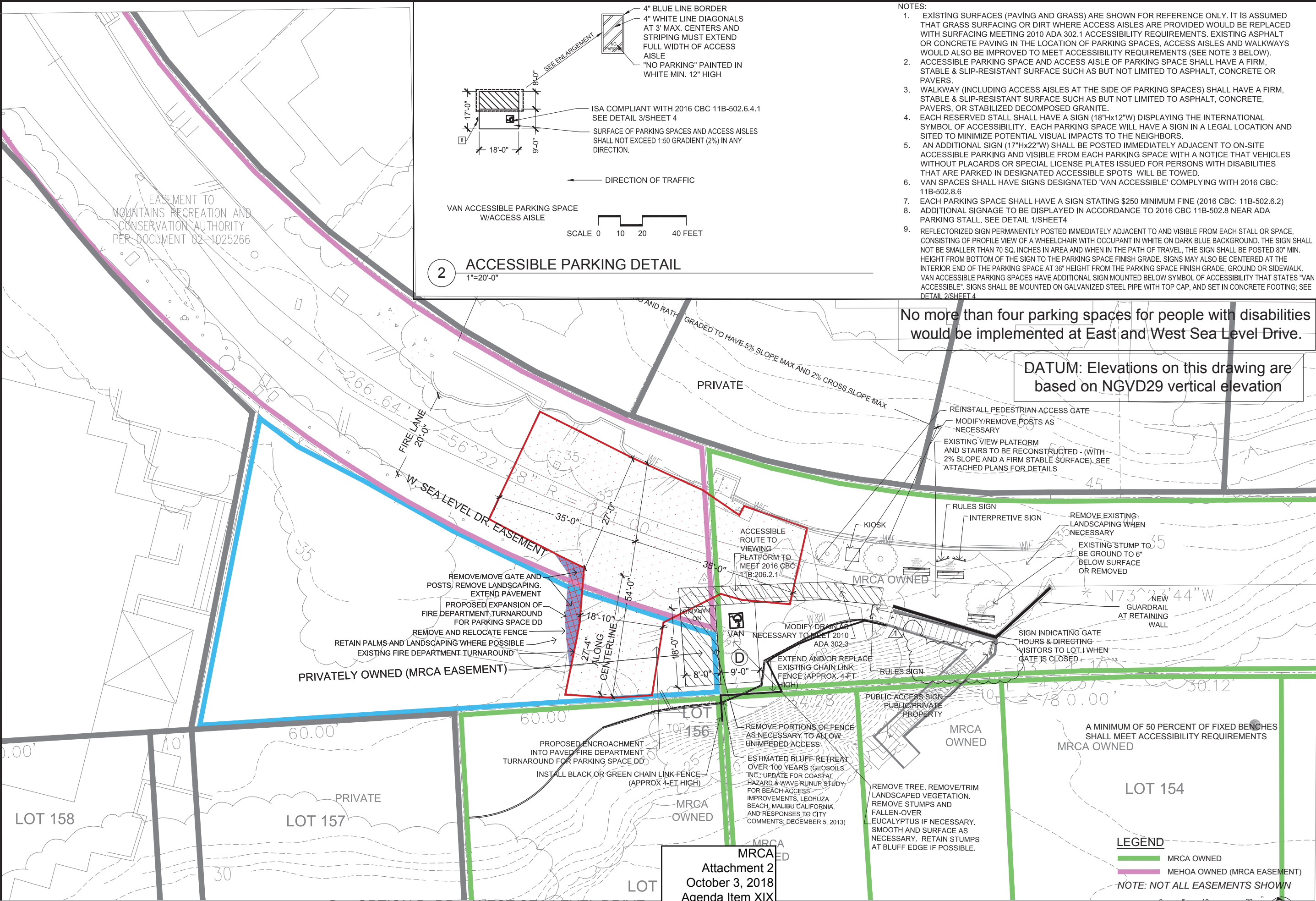
- NOTES:
- EXISTING SURFACES (PAVING AND GRASS) ARE SHOWN FOR REFERENCE ONLY. IT IS ASSUMED THAT GRASS SURFACING OR DIRT WHERE ACCESS AISLES ARE PROVIDED WOULD BE REPLACED WITH SURFACING MEETING 2010 ADA 302.1 ACCESSIBILITY REQUIREMENTS. EXISTING ASPHALT OR CONCRETE PAVING IN THE LOCATION OF PARKING SPACES, ACCESS AISLES AND WALKWAYS WOULD ALSO BE IMPROVED TO MEET ACCESSIBILITY REQUIREMENTS (SEE NOTE 3 BELOW).
 - ACCESSIBLE PARKING SPACE AND ACCESS AISLE OF PARKING SPACE SHALL HAVE A FIRM, STABLE & SLIP-RESISTANT SURFACE SUCH AS BUT NOT LIMITED TO ASPHALT, CONCRETE OR PAVERS.
 - WALKWAY (INCLUDING ACCESS AISLES AT THE SIDE OF PARKING SPACES) SHALL HAVE A FIRM, STABLE & SLIP-RESISTANT SURFACE SUCH AS BUT NOT LIMITED TO ASPHALT, CONCRETE, PAVERS, OR STABILIZED DECOMPOSED GRANITE.
 - EACH RESERVED STALL SHALL HAVE A SIGN (18"Hx12"W) DISPLAYING THE INTERNATIONAL SYMBOL OF ACCESSIBILITY. EACH PARKING SPACE WILL HAVE A SIGN IN A LEGAL LOCATION AND SITED TO MINIMIZE POTENTIAL VISUAL IMPACTS TO THE NEIGHBORS.
 - AN ADDITIONAL SIGN (17"Hx22"W) SHALL BE POSTED IMMEDIATELY ADJACENT TO ON-SITE ACCESSIBLE PARKING AND VISIBLE FROM EACH PARKING SPACE WITH A NOTICE THAT VEHICLES WITHOUT PLACARDS OR SPECIAL LICENSE PLATES ISSUED FOR PERSONS WITH DISABILITIES THAT ARE PARKED IN DESIGNATED ACCESSIBLE SPOTS WILL BE TOWED.
 - VAN SPACES SHALL HAVE SIGNS DESIGNATED 'VAN ACCESSIBLE' COMPLYING WITH 2016 CBC: 11B-502.8.6
 - EACH PARKING SPACE SHALL HAVE A SIGN STATING \$250 MINIMUM FINE (2016 CBC: 11B-502.6.2)
 - ADDITIONAL SIGNAGE TO BE DISPLAYED IN ACCORDANCE TO 2016 CBC 11B-502.8 NEAR ADA PARKING STALL. SEE DETAIL 1/SHEET 4
 - REFLECTORIZED SIGN PERMANENTLY POSTED IMMEDIATELY ADJACENT TO AND VISIBLE FROM EACH STALL OR SPACE, CONSISTING OF PROFILE VIEW OF A WHEELCHAIR WITH OCCUPANT IN WHITE ON DARK BLUE BACKGROUND. THE SIGN SHALL NOT BE SMALLER THAN 70 SQ. INCHES IN AREA AND WHEN IN THE PATH OF TRAVEL, THE SIGN SHALL BE POSTED 80" MIN. HEIGHT FROM BOTTOM OF THE SIGN TO THE PARKING SPACE FINISH GRADE. SIGNS MAY ALSO BE CENTERED AT THE INTERIOR END OF THE PARKING SPACE AT 36" HEIGHT FROM THE PARKING SPACE FINISH GRADE, GROUND OR SIDEWALK. VAN ACCESSIBLE PARKING SPACES HAVE ADDITIONAL SIGN MOUNTED BELOW SYMBOL OF ACCESSIBILITY THAT STATES "VAN ACCESSIBLE". SIGNS SHALL BE MOUNTED ON GALVANIZED STEEL PIPE WITH TOP CAP, AND SET IN CONCRETE FOOTING; SEE DETAIL 2/SHEET 4



2 ACCESSIBLE PARKING DETAIL
1"=20'-0"

No more than four parking spaces for people with disabilities would be implemented at East and West Sea Level Drive.

DATUM: Elevations on this drawing are based on NGVD29 vertical elevation



1 OPTION D, DD - WEST SEA LEVEL DRIVE
1"=10'-0"

MRCA
Attachment 2
October 3, 2018
Agenda Item XIX

LECHUZA BEACH
PUBLIC ACCESS
IMPROVEMENTS

East Sea Level Drive
Malibu, California

A PROJECT OF:
**Mountains Recreation
and Conservation
Authority**

570 West Avenue 26, Suite 100
Los Angeles, CA 90065
(323) 221-9944

SITE DESIGN:
**Mountains Recreation
and Conservation
Authority**

570 West Avenue 26, Suite 100
Los Angeles, CA 90065
(323) 221-9944

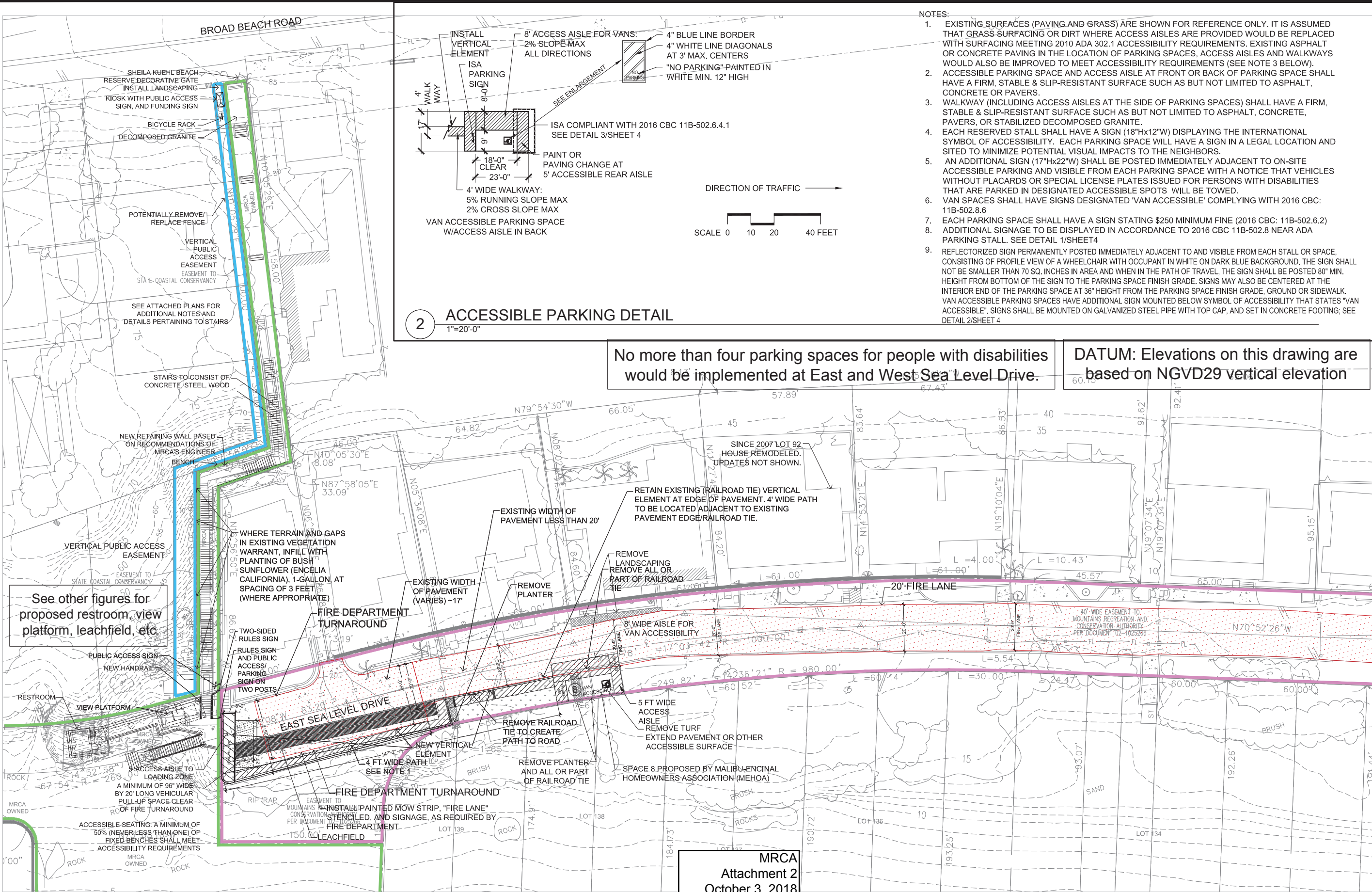
SURVEYOR:
Land & Air Surveying
22741 Pacific Coast Highway
Suite 400A
Malibu, CA 90265
(310) 456-9381

NOT FOR
CONSTRUCTION

ISSUED:
6/13/2016
8/9/2016
2/7/2017
7/14/2017
8/2/2018
8/23/2018
DRAWN: CM
CHECKED: JT
PROJECT: 24.404.444.3221.261
SCALE: As noted

EAST
SEA LEVEL
8

Project Area III
Project Elements
III-1 to III-5
3 OF 4

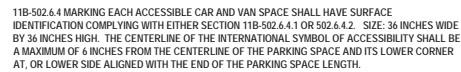


MRCA
Attachment 2
October 3, 2018
Agenda Item XIX

West Sea Level Drive
East Sea Level Drive
Malibu, California

A PROJECT OF:
**Mountains Recreation
and Conservation
Authority**
570 West Avenue 26, Suite 100
Los Angeles, CA 90065
(323) 221-9944

SITE DESIGN:
**Mountains Recreation
and Conservation
Authority**
570 West Avenue 26, Suite 100
Los Angeles, CA 90065
(323) 221-9944



3 ISA SYMBOL



21B-502.6 502.6.1, 502.6.2 AND 502.6.3 IDENTIFICATION. PARKING SPACE IDENTIFICATION SIGNS SHALL INCLUDE THE INTERNATIONAL SYMBOL OF ACCESSIBILITY COMPLYING WITH SECTION 703.7.2.1. SIGNS IDENTIFYING VAN PARKING SPACES SHALL CONTAIN ADDITIONAL LANGUAGE OR AN ADDITIONAL SIGN WITH THE DESIGNATION "VAN ACCESSIBLE". SIGNS SHALL BE 60 INCHES MIN. ABOVE FLOOR FINISH OR ON GROUND SURFACE MEASURED TO THE BOTTOM OF THE SIGN. FINISH AND SIZE. PARKING IDENTIFICATION SIGNS SHALL BE REFLECTORIZED WITH A MINIMUM AREA OF 70 SQ. INCHES. MINIMUM FINE ADDITIONAL LANGUAGE OR AN ADDITIONAL SIGN BELOW THE INTERNATIONAL SYMBOL OF ACCESSIBILITY SHALL STATE "MINIMUM FINE \$250." LOCATION A PARKING SPACE IDENTIFICATION SIGN SHALL BE VISIBLE FROM EACH PARKING SPACE. SIGNS SHALL BE POSTED EITHER IMMEDIATELY ADJACENT TO THE PARKING SPACE OR WITHIN THE PROJECTED PARKING SPACE WIDTH AT THE HEAD END OF THE PARKING SPACE.

2 VAN ACCESSIBLE SIGN



11B-502.1, 502.2, 502.62 AND 502.63 IDENTIFICATION. PARKING SPACE IDENTIFICATION SIGNS SHALL INCLUDE THE INTERNATIONAL SYMBOL OF ACCESSIBILITY COMPLYING WITH SECTION 702.1.2. SIGNS IDENTIFYING ACCESSIBLE PARKING SPACES SHALL BE 40 INCHES MIN. ABOVE FLOOR FINISH OR ON GROUND SURFACE MEASURED TO THE BOTTOM OF THE SIGN UNLESS IN PATH OF TRAVEL. FINISH AND SIZE. PARKING IDENTIFICATION SIGNS SHALL BE REFLECTORIZED WITH A MINIMUM AREA OF 70 SQ. INCHES. MINIMUM FINISH ADDITIONAL LANGUAGE OR AN ADDITIONAL SIGN BELOW THE INTERNATIONAL SYMBOL OF ACCESSIBILITY SHALL STATE "MINIMUM FINISH 250" LOCATION A PARKING SPACE IDENTIFICATION SIGN SHALL BE VISIBLE FROM EACH PARKING SPACE. SIGNS SHALL BE POSTED EITHER IMMEDIATELY ADJACENT TO THE PARKING SPACE OR WITHIN THE PROJECTED PARKING SPACE WIDTH AT THE HEAD END OF THE PARKING SPACE.

4 ACCESSIBLE SIGN

NOT FOR
CONSTRUCTION

ISSUED:

7/14/217

8/23/2018

DRAWN: GG
CHECKED: JT
PROJECT: 24.404.444.3221.261
SCALE: As noted

PARKING SIGN DETAILS