

LOS ANGELES RIVER AND URBAN PARKLANDS

SANTA MONICA MOUNTAINS CONSERVANCY AND MOUNTAINS RECREATION CONSERVATION AUTHORITY

EDUCATION AND INTERPRETATION

MRCA urban parks serve as outdoor classrooms for surrounding communities with traditional park programs such as campfires, nature hikes, and youth leadership programs as well as serving as gateways to the parklands and open space of the Santa Monica Mountains with the Transit to Trails program.



PACOIMA WASH NATURAL PARK

The new multiple-benefit park collects and cleans 33 acres of urban wet and dry weather runoff preventing pollution from draining into the Wash. The project also restores habitat and connectivity to the Pacoima Wash and San Gabriel Mountains.



TUJUNGA WASH GREENWAY AND STREAM RESTORATION

The innovative project diverts water from a concrete flood control channel, naturally cleans polluted runoff, and recharges enough groundwater to supply the drinking water of 750 families each year. A new one mile walking path offers shade and views of the Santa Monica Mountains.



LOS ANGELES RIVER GREENWAY

MRCA created a series of shady parks along the natural "soft bottom" portion of the river including Elysian Valley Gateway, Rattlesnake, Oso, Steelhead, and Egret Parks. They feature artistic gateways, viewpoints, an amphitheater, picnic benches, interpretive displays, river access, and outdoor exercise equipment.



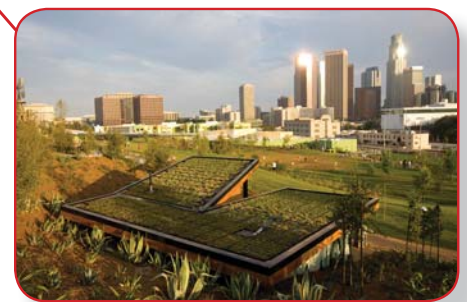
LEWIS MACADAMS RIVERFRONT PARK

The first clean water natural park on the Los Angeles River, Lewis MacAdams Riverfront Park, formerly known as Marsh Park, demonstrates the most simple, cost-effective way to clean pollutants before they enter our waterways while bringing nature back into our neighborhoods.



LOS ANGELES RIVER CENTER AND GARDENS

The beautiful Spanish-style River Center campus serves as a focal point for the collective effort to revitalize the Los Angeles River. Amenities include a visitor center, the River Garden Park, a bicycle staging area, and conference facilities.



VISTA HERMOSA NATURAL PARK

Built with state-of-the-art "green" technologies, 10.5-acre Vista Hermosa Natural Park restores topography and native plant communities in a densely populated area near Downtown Los Angeles.



BALLONA CREEK TRAIL AND BIKE PATH

MRCA restored native habitat and improved public access and safety along the eight-mile bikeway by building attractive new entrances, installing signage, and planting the greenway with native plants.



LOS ANGELES RIVER RECREATION

MRCA manages summertime recreational use of the Los Angeles River in the Glendale Narrows and Sepulveda Basin. Non-motorized boating, fishing, birdwatching, and walking offer respite from city life.

