

## *King Gillette Ranch Overnight Accommodations*



# AVAILABILITY & BOOKINGS



## Permit process

- If you already have an event booking with us, you may add overnight accommodations to your existing permit. It is up to you to collect payment from your guests if they are paying for their own rooms. MRCA cannot process individual room payments.
- Minimum overnight guest count applies for each building – the Dorm and the Annex. If you don't have enough guests, you can elect to pay for the minimums still and spread the cost over the existing guests. Please speak to your site rep before opting for this.
- You don't need to finalize guest numbers and room selections until a week out. You should provide estimates as soon as you are interested in booking, and give updates as often as you can.

## Venue Exclusivity & Availability

- Employees, tenants and other visitors of our park may concurrently use other areas of the property while during your permitted event. Your permitted area is typically exclusive during your booking but if there are areas or facilities that cross with public use areas such as parking or trails, then MRCA staff will advise on how to proceed.
- Park opening hours to the public is 7am to sunset, 7 days a week. Your Special Use Permit allows you to host events past closing time, giving you unique and privileged access to our parks and facilities not otherwise available to the public.
- The amount of time you can spend at the park for your event is flexible as we charge accordingly for evening and overnight events. We allow multiple day setup and breakdown for larger productions and events.

## Fees & What's Included

- Bookings are venue/location-only. KGR does not offer catering or rental services (beyond very basic foldout tables and chairs) but can recommend experienced vendors.
- Additional fees will also apply for the following variances: public holidays, overnight events or holds, prep days for early set-up; strike days for late breakdown; hold days for in-between days, additional tech scouts or excessive guided site visits
- MRCA staff is required to monitor all special events. The number of uniformed park representatives are determined at the discretion of the MRCA Event Manager and Park Manager, based on the variables of your booking. MRCA staff monitors are on-site during the event to ensure the rules and regulations are followed and the facility is treated appropriately. Monitors do not provide security for your event, or assist your vendors. You may contract with outside security for this service. Do not leave your property unattended at any time.

## Insurance

- An insurance policy that indemnifies MRCA and covers general liability is required. Your permit will specify the required limits of liability, additional insured entities and other terms. A valid certificate of insurance is required when your permit is submitted for approval.

*Overnights at the ranch are  
available for event guests only*



# OVERNIGHT RATES



## Overnight rates for event guests

- The following rates are add-on rates that only apply when booked with an event at King Gillette Ranch.
- The prices on the right are some examples of the most common packages. An accurate quote for your event specifics can be provided once you have sent in a completed [inquiry form](#).
- A on-call monitor fee may be incurred for any non-emergency or non-urgent service calls in the overnight period (after 7pm to 7am).

## Mansion Annex accommodations

- The Annex consists of 8 bedrooms. Linens are included. 1 bedroom does not have an ensuite bathroom, but may use the bathroom in the hallway and showers on lower level. Triple consists of one queen bed and one twin bed. Wi-Fi available.

## Dormitory accommodations

- 44 bunk-bed rooms, most sleep 2/room, 4 rooms can sleep 4-6. Communal bathrooms and showers on each floor, plus 1 larger room on each floor that has their own private shower and toilet. Rooms contain one stack of bunk beds, sink, mirror, table, lamp, chair, garment rack and under bed storage. Some rooms have 2-3 stacks of bunk beds. Wi-Fi available.
- Commercial kitchen and cafeteria in another building can be added on for additional cost. There is also a large room available in Dorm building on the first floor that can be used as dining/meeting room for a fee. Outside catering is allowed.
- Linens are not included in pricing, but may be added for a fee. There is no daily linen service.
- No toiletries or hair dryers provided. No mini fridge or coffee makers in rooms.
- If booking for a large group, you may work out the room assignments on your own, or with the assistance of KGR staff.

## Cook and Carraige Houses

2 stand alone houses, Cook House has 4 bedrooms (sleeping 2 each room), kitchen, bath with 2 showers and 2 toilets, living room, and Smart TV. Carraige House has 9 bedrooms, some sleep 2, mini fridge, microwave, living room with Smart TV, 2 showers, 2 toilets.

**Mansion Annex rooms:** 8 carpeted bedrooms, 7 with private bathrooms. 1 Triple, 4 queen, 2 2 twin rooms and 1 single twin room. Premium linen package included. Minimum booking is 1 night, 3 rooms

Occupancy	1-night stay	2-night stay
Single	\$95	\$170
Double (Queen)	\$160	\$270
Triple (1 room only)	\$210	\$350

**Dormitory:** 44 carpeted rooms with communal bathrooms and showers on each floor. Linens are not included in base rate, linen packages are optional extras. Minimum booking is 1 night, 25 people.

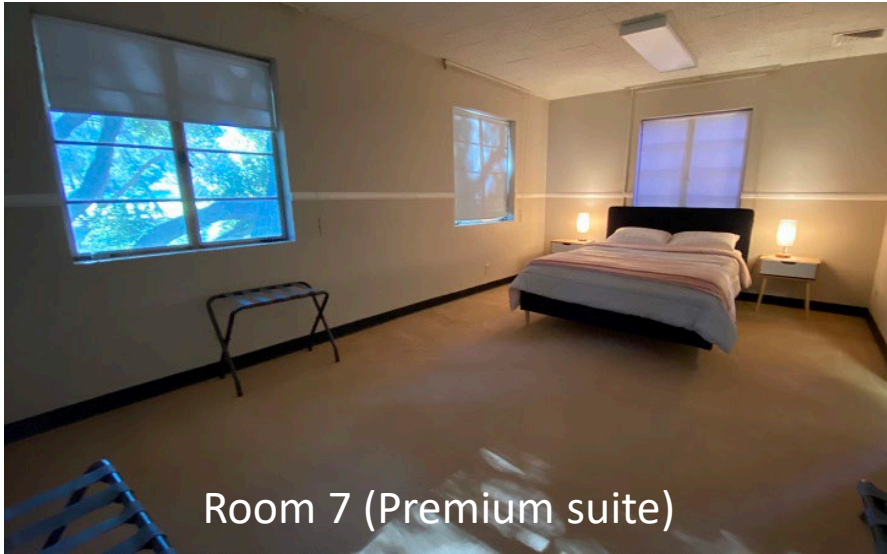
Occupancy	1-night stay	2-night stay
4-6 person room	\$55 per person	\$80 per person
2-person room	\$60 per person	\$100 per person
1-person room	\$65 per person	\$110 per person

**Linen Package:** For dorm rooms, linen package includes fitted sheet, flat sheet, comforter or blanket, pillow, pillowcase, bath towel, hand towel, face towel

Linens	\$40.00/person
--------	----------------

**Cook and Carraige:** Linens are included in pricing.  
Cook House: \$1000/night, Carraige House \$1500/night

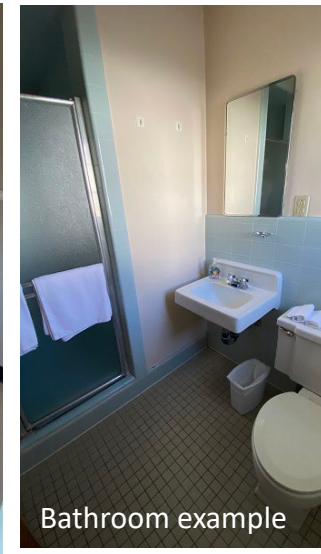
# MANSION ANNEX ACCOMMODATION Upper level



Room 7 (Premium suite)



Room 6 (Queen + single)



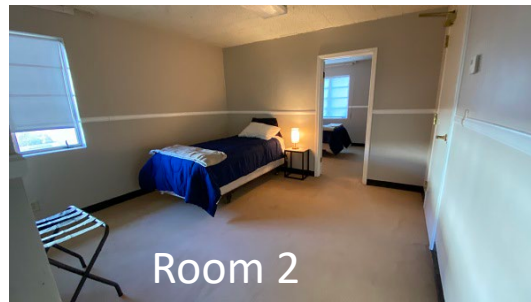
Bathroom example



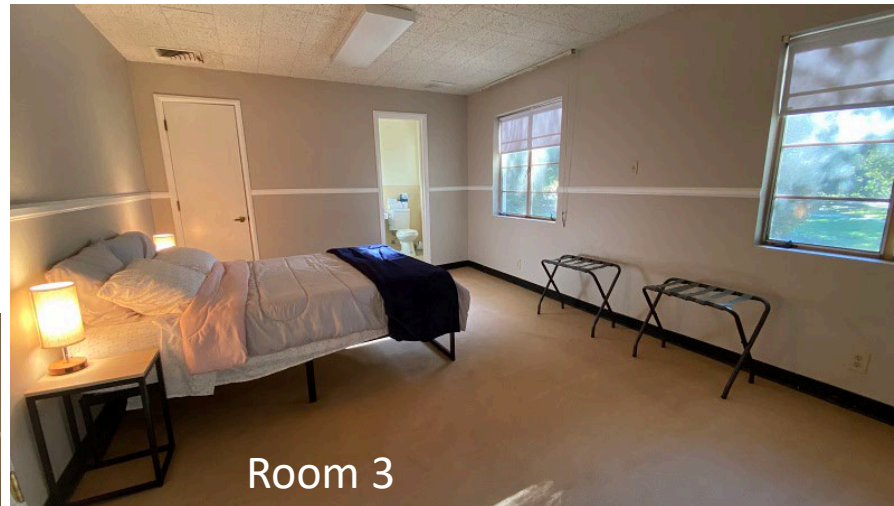
Room 1



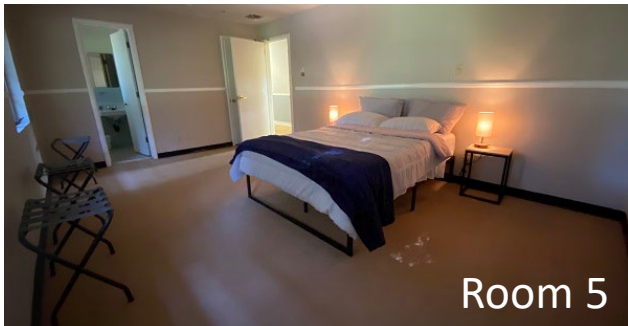
Room 4



Room 2



Room 3



Room 5

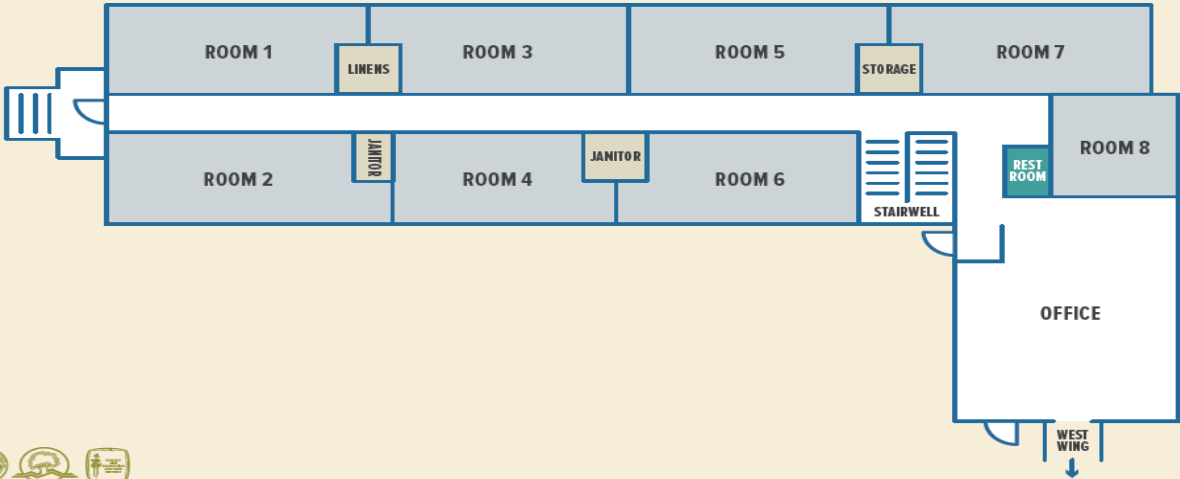


Room 8

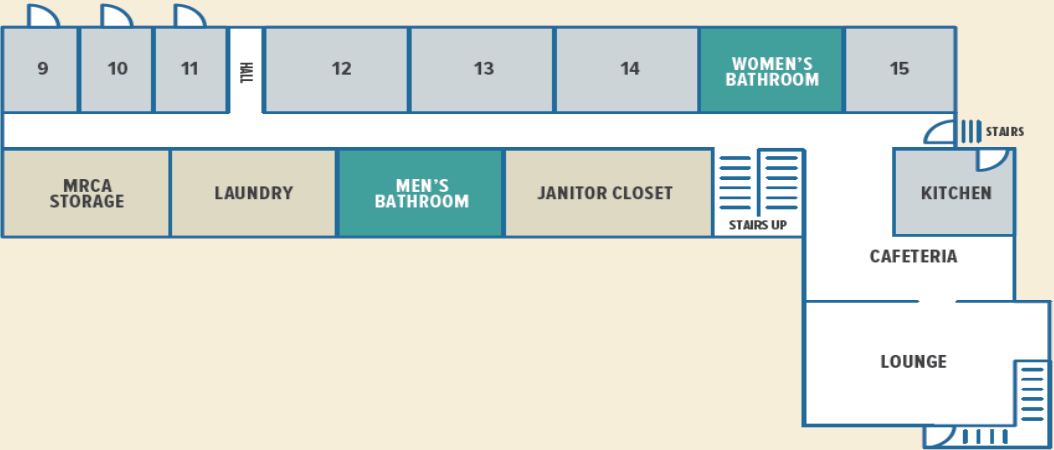


Room 2

MANSION ANNEX FLOOR PLAN  
UPPER LEVEL

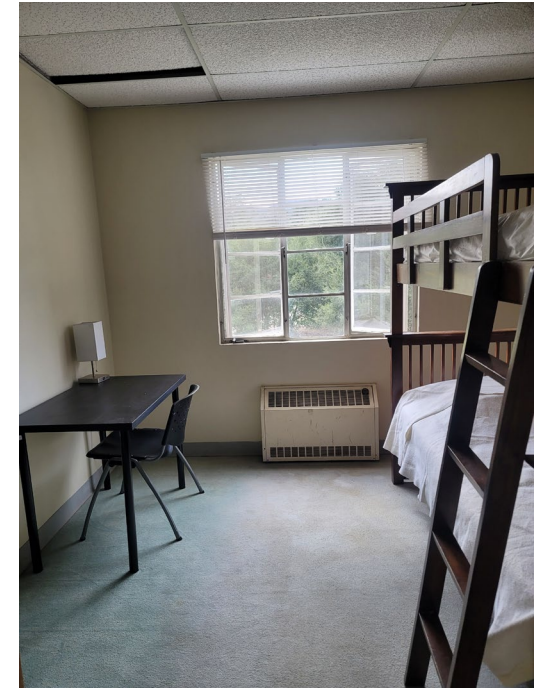


MANSION ANNEX FLOOR PLAN  
LOWER LEVEL





# DORMITORY ACCOMMODATION

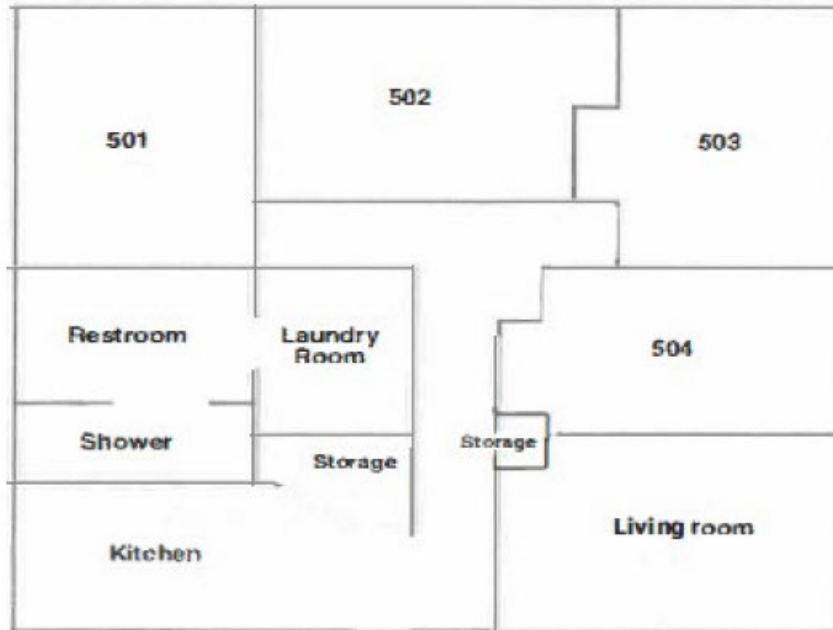






# Cook House

COOK HOUSE sleeps 8





# Carraige House

CARRAIGE HOUSE sleeps 9

