

# Mountains Recreation and Conservation Authority

## Franklin Canyon Park

### Event Capacities and Area Descriptions



Photo credit: Chris Schmitt Photography

Imagine your wedding in this beautiful indoor-outdoor setting!

This beautiful auditorium is newly renovated with wood laminate flooring, air conditioning and heating and dimmer controlled lighting with glass doors giving access to our courtyard.

This room has a maximum capacity of 150 guests.

### Eugene and Michael Rosenfeld Auditorium



Photo credit: Chris Schmitt Photography

### Sam Goldman Amphitheater



Photo credit: Diana Hartmann

The Sam Goldman Amphitheater is a short walk through the breezeway from the Auditorium and courtyard.

This site would make a beautiful area for your ceremony before retiring to the auditorium for your reception.

With bleacher-style seating on unpaved ground and an unpaved performance area measuring 25' x 30'.

This area has a seating capacity of 200 people.



Photo credits Independent Locations

This area has a maximum capacity of 400 people.

The bench style seating in the amphitheater has a capacity of 175 people.

The adjacent paved parking lot has a capacity of 31 vehicles, but during large events there are other parking options available.

## Doheny Ranch

The Doheny Ranch and Amphitheater is a quiet, secluded picnic site among oak and sycamore trees in Lower Franklin Canyon. There is a very large open grass area with a bench style amphitheater under a beautiful Sycamore Tree.

This site is perfect for large company picnics, fantasy weddings, family reunions or any other large group who wants to enjoy the outdoors during their event.

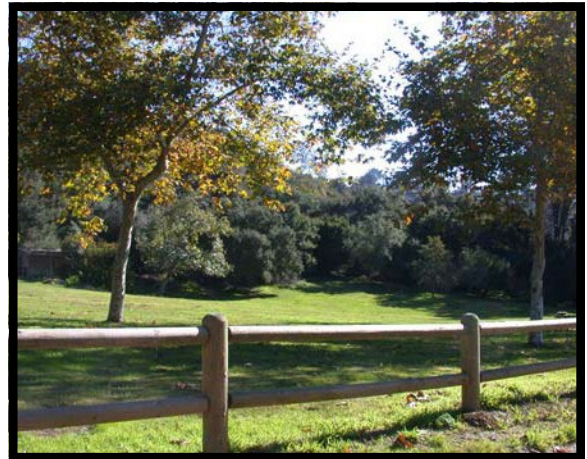


Photo credits Independent Locations

There is one picnic bench located here for peaceful viewing of the local animals and calm waters.

There is a maximum capacity at this site for up to 50 people.

## Lake Picnic Area

This picnic area is located on the east side of the lake directly next to the water and is reached mainly by trail.

This is a perfect area to be on the water, just shuttle your guests to the site and then up the auditorium for your reception.

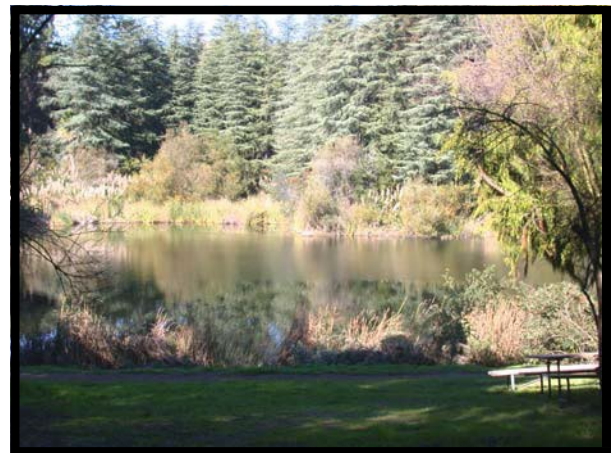


Photo credits Independent Locations



Photo credits Independent Locations

This is a quiet area with three picnic tables and a single unisex restroom located at the entrance.

The maximum capacity for this area is 150 people.

A small parking area with four parking spaces is located at the front of this area with additional parking across the road.

## Heavenly Pond

Heavenly Pond is a small duck pond located to the west of the Franklin Canyon Reservoir. It is a quiet area perfect for small birthday parties or ceremonies.



Photo credits Independent Locations



Photo credits Independent Locations

This area has a stone and bronze sculpture located at one end , with three picnic tables.

The maximum capacity of this area is 100 people. There are restrooms located just a small hike up the trail to the offices.

## Upper Picnic Area

This area is located by the main gravel parking lot at the north end of the park, below the offices and Nature Center.



Photo credits Independent Locations