



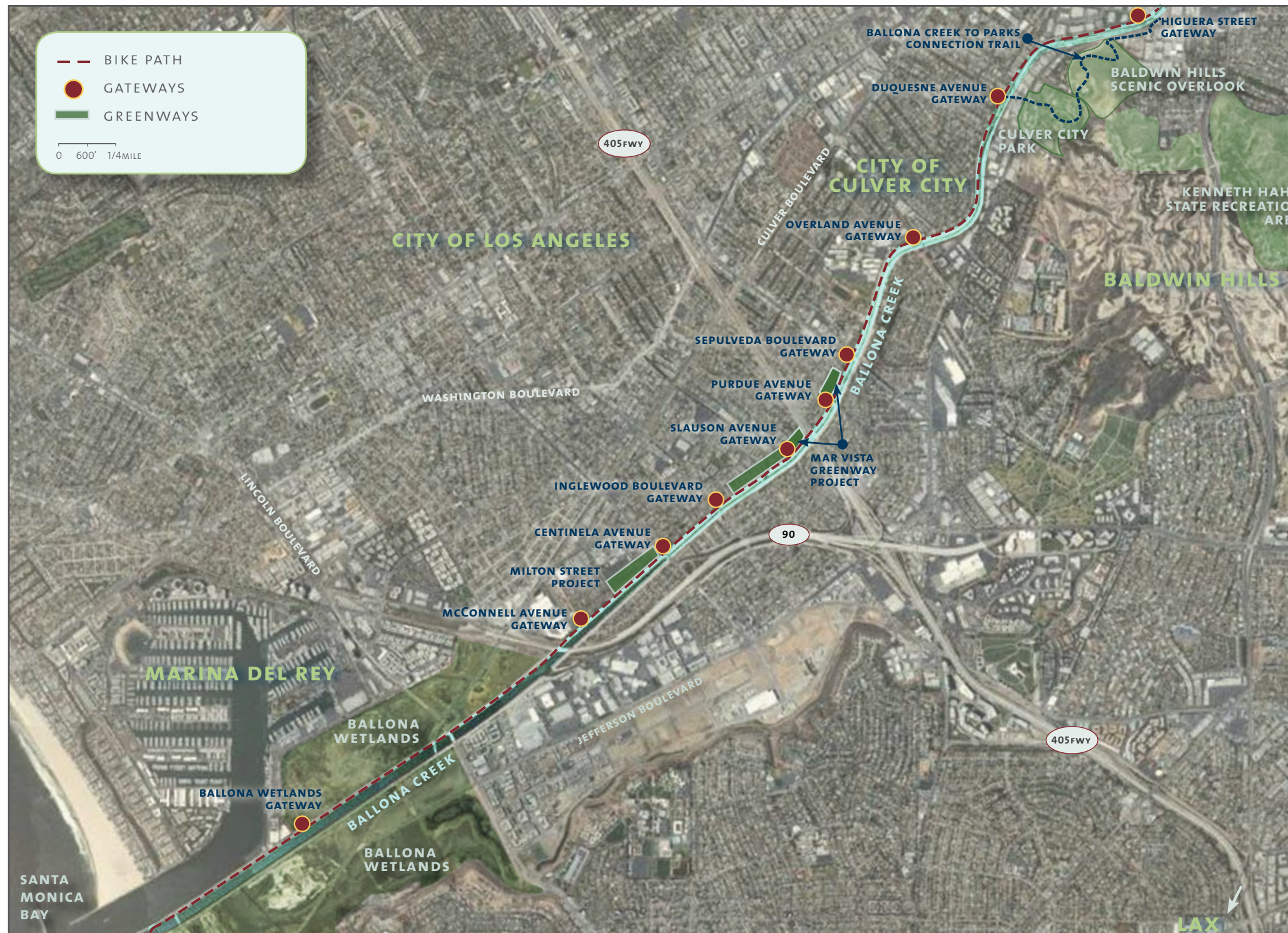
BALLONA CREEK

BALLONA CREEK was once a meandering perennial stream that met the Pacific Ocean in a broad expanse of tidal lagoons, salt marshes, and wetlands. Today, the mostly concrete-lined channel drains a largely urbanized watershed of approximately 130 square miles roughly bounded by the Santa Monica Mountains to the north, the 110 Freeway to the east, the Baldwin Hills to the south, and the Pacific Ocean to the west. The Santa Monica Mountains Conservancy and Mountains Recreation and Conservation Authority (MRCA) are working together with a broad consortium of federal, State, and local agencies, cities, and the County of Los Angeles, community-based organizations, and nonprofits to restore the ecological health of the creek, increase habitat, improve and expand open space, optimize water resources in Ballona Creek watershed, and promote connectivity from the Santa Monica Mountains, to the Baldwin Hills, Ballona Wetlands, and the Santa Monica Bay.

THE EIGHT-MILE BALLONA CREEK TRAIL AND BIKE PATH was originally developed on the maintenance road within the public right-of-way on the north bank of Ballona Creek in the 1970's. The bike path extends through the cities of Los Angeles and Culver City, and Los Angeles County, passing by the Baldwin Hills and the Ballona Wetlands, and connects to the Coast bike path at its terminus at Playa del Rey. The trail and bike path is popular with cyclists, runners, strollers, and skaters. The Conservancy and MRCA are spearheading numerous projects to make the bike path safer and more accessible and attractive, while restoring native species, and improving habitat quality along the creek.



BALLONA CREEK TRAIL & BIKE PATH



Centinela Avenue Gateway



Inglewood Boulevard Gateway



McConnell Avenue Gateway



Sepulveda Boulevard Gateway

MOUNTAINS RECREATION AND CONSERVATION AUTHORITY BALLONA CREEK PROJECTS



Inglewood Boulevard Gateway — Before and After



Mar Vista Greenway Rendering by Laura Saltzman



The Baldwin Hills



Great Egret, Ballona Wetlands Photo by Bill Beebe



Centinela Avenue Gateway

BALLONA CREEK GATEWAYS

Improved entryways to the Ballona Creek Trail and Bike Path feature artist-designed gates, benches, drinking fountains, interpretive signage, and native landscaping to increase habitat and attract animals and birds. The attractive gateways promote public safety and enhance surrounding neighborhoods.

MAR VISTA GREENWAY

A partnership with Los Angeles County Supervisor Mark Ridley-Thomas, Baldwin Hills Conservancy, City of Los Angeles, Ballona Creek Renaissance, Los Angeles Conservation Corps, Friends of Ballona Wetlands, Santa Monica Bay Restoration Commission, and others, this project restores habitat, improves water quality, promotes public safety, and creates job opportunities for neighborhood youth, while enhancing more than a half mile of bike path alongside the creek.

BALLONA CREEK TO PARKS CONNECTION TRAIL

A trail will connect Baldwin Hills Scenic Overlook and Culver City Park with the Ballona Creek Trail and Bike Path. This major public access and connectivity project will include trail development, improvements to trail gateways, interpretive signage, public safety features, and public art. This project is part of a regional effort known as "Park to Playa" that aims to create a continuous trail linking the Baldwin Hills Parklands to the Pacific Ocean.

MILTON STREET GREENWAY PROJECT

Development of 1.2-acre "clean water" greenway adjacent to Ballona Creek Trail and Bike Path. The greenway will be designed so that water that runs off of the streets will be cleaned before it enters the creek and flows into the Santa Monica Bay. Located across from Marina Del Rey Middle School, the greenway will teach students about optimizing water resources, and the importance of preserving and restoring habitat and the natural systems of the creek.

BALLONA WETLANDS GATEWAY IMPROVEMENTS

Improvements will provide immediate and low impact public access to the ecologically sensitive Ballona Wetlands.

RIVER PARKWAYS WAYFINDING AND INTERPRETIVE SIGNAGE PROJECT

Safety striping and uniform signage will be more attractive and increase public safety on the entire length of the bike path. A series of interpretive signs will educate and inform students and visitors about the natural history of the creek, its abundant resources, and diverse wildlife.



THE SANTA MONICA MOUNTAINS CONSERVANCY is a State agency established by the California Legislature in 1980. Through direct action, alliances, partnerships, and joint powers authorities, the Conservancy's mission is to strategically buy back, preserve, protect, restore, and enhance treasured pieces of Southern California to form an interlinking system of urban, rural and river parks, open space, trails, and wildlife habitats that are easily accessible to the general public.

THE MOUNTAINS RECREATION AND CONSERVATION AUTHORITY (MRCA) is a local government public entity dedicated to the preservation and management of open space, urban parkland, watershed lands, trails, and wildlife habitat. The MRCA manages almost 60,000 acres of public land and parks that it owns and that are owned by the Santa Monica Mountains Conservancy or other agencies. The MRCA provides natural resources and scientific expertise, critical regional planning services, park construction, operations, fire prevention and ranger services, as well as education and leadership programs for thousands of youth each year. It is one of the lead agencies revitalizing the Los Angeles River and its tributaries.

PARTNER PUBLIC AGENCIES AND ORGANIZATIONS (partial list)

County of Los Angeles, Mark Ridley-Thomas, Supervisor, Second District
 State of California Natural Resources Agency
 Baldwin Hills Conservancy
 California State Parks
 California Coastal Conservancy
 Santa Monica Bay Restoration Commission
 Baldwin Hills Regional Conservation Authority
 California Department of Fish and Game

City of Los Angeles
 City of Culver City
 United States Army Corps of Engineers
 Ballona Creek Renaissance
 Friends of Ballona Creek Wetlands
 Los Angeles Conservation Corps
 Environment Now
 Mar Vista Family Center
 Ballona Institute

A project of
 Santa Monica Mountains Conservancy
 Mountains Recreation and Conservancy Authority



BALLONA CREEK