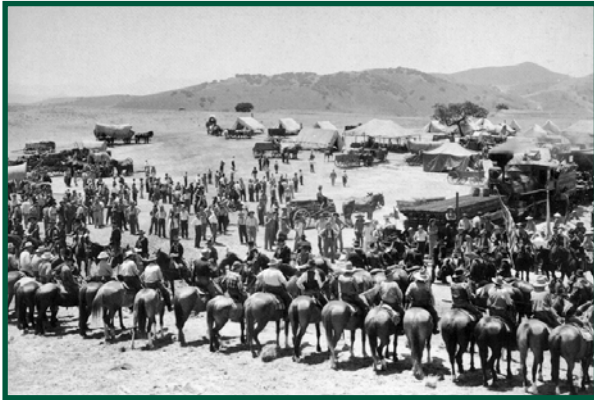


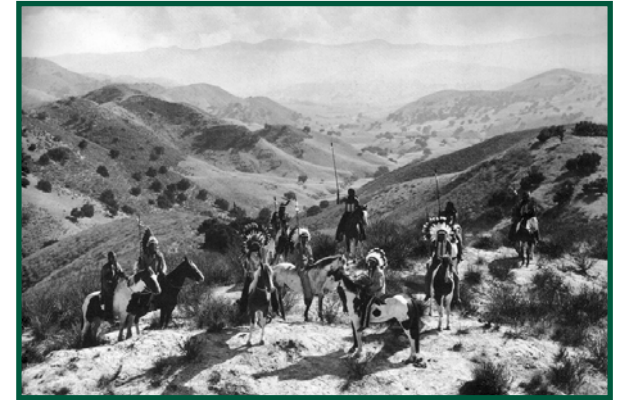
The Ranch on the Silver Screen



Duel in the Sun



They Died With Their Boots On



They Died With Their Boots On

Since the Silent Film Era and continuing to this day, the ranch has been the site of dozens of movies, television shows, and commercials. Motion picture pioneer Jesse L. Lasky used the property starting in 1914 as a location for filming what he described as “big scenes.” The ranch served as the setting for high profile films, including *Gone with the Wind*, *They Died With Their Boots On*, *The Charge of the Light Brigade*, *The Thundering Herd*, *Duel in the Sun*, and television shows such as *Petticoat Junction*. The broad plateau at the southern part of the park has long been known as Lasky Mesa.