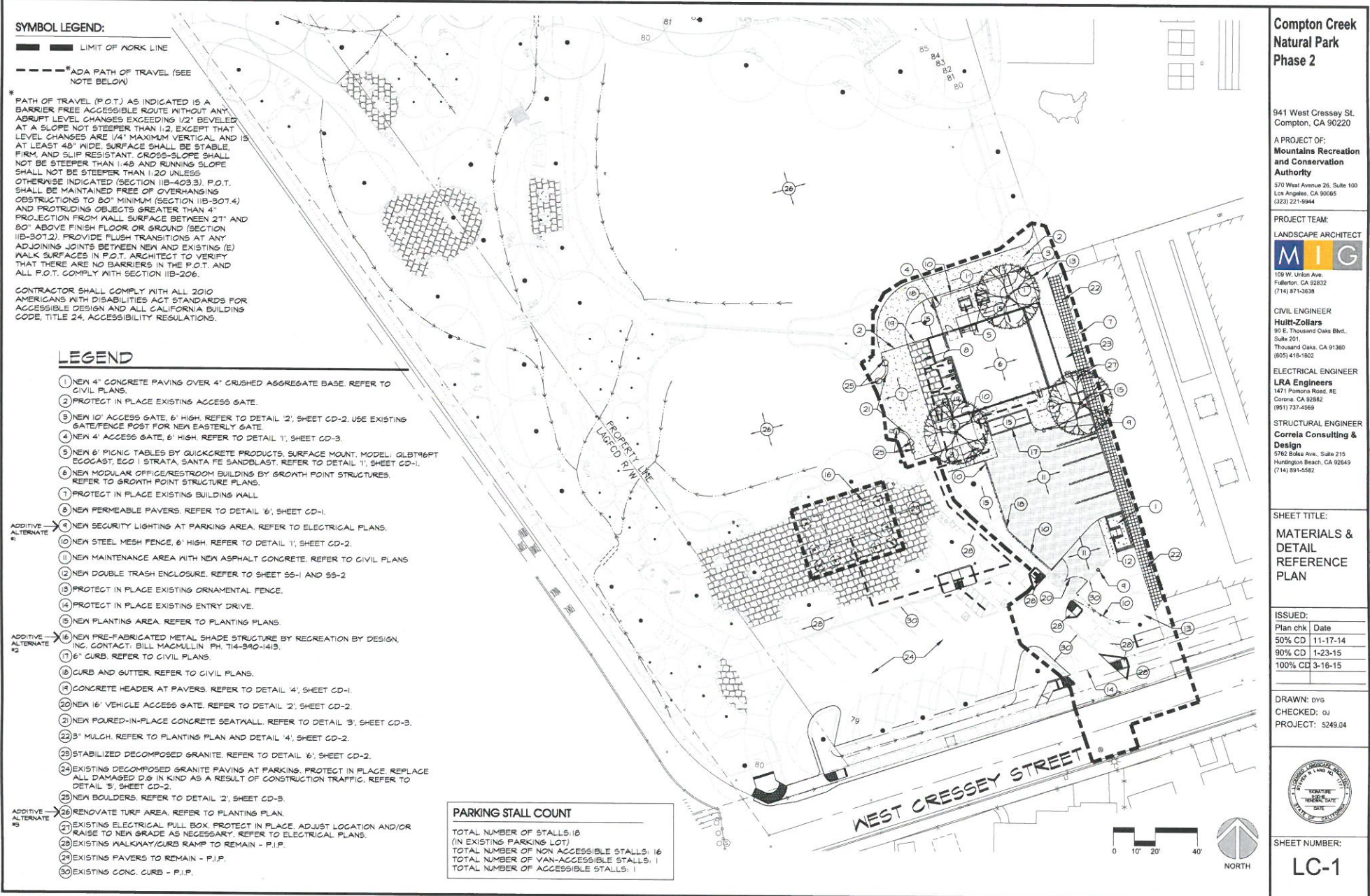


Attachment
MRCA Item VI(c)
March 2, 2016



GrowthPoint Global Inc.

1507 7TH STREET, SUITE 488
SANTA MONICA, CALIFORNIA 90401
TEL: 877.393.4483
FAX: 877.393.4483
info@growthpointglobal.com

THE IDEAS AND DESIGNS REPRESENTED HEREIN WERE PREPARED BY OR AS WORK MADE FOR HERE, FOR GROWTHPOINT GLOBAL INC. GROWTHPOINT GLOBAL INC. DOES HEREBY RESERVE ALL COMMON LAW, STATUTORY AND OTHER RIGHTS, INCLUDING COPYRIGHTS IN AND TO THE IDEAS AND DESIGNS SHOWN AND EXHIBITED HEREIN, WHICH IDEAS AND DESIGNS MAY NOT BE USED OR REPRODUCED BY ANY OTHER PERSON OR ENTITY FOR ANY OTHER PURPOSE WITHOUT THE PRIOR WRITTEN CONSENT OF GROWTHPOINT GLOBAL INC. SUBMITTAL OR DISTRIBUTION TO MEET OFFICIAL REGULATORY REQUIREMENTS OR FOR OTHER PURPOSES IN CONNECTION WITH THIS PROJECT IS NOT TO BE CONSTRUED AS PUBLICATION IN DEROGATION OF GROWTHPOINT GLOBAL INC.'S COPYRIGHTS OR OTHER RESERVED RIGHTS.

ARCHITECT/ENGINEER STAMPS AND SEALS



AGENCY APPROVAL

IDENTIFICATION STAMP
DIVISION OF STATE ARCHITECT
OFFICE OF REGULATION SERVICES
FILE NO.
APPL. NO.
ACS: _____ FLS: _____ SS: _____
DATE: _____

PROJECT NAME

**MRCA
MODULAR BUILDING**
941 WEST CRESSEY ST.
COMPTON, CA 90220

MARK DATE DESCRIPTION
10/30/14 100% SUBMITTAL

DRAWN BY:

SHEET TITLE:

FLOOR PLAN

PROJECT NO.

DRAWN:

PC SHEET NUMBER:

A2.01

DATE: 09.04.2014

SHEET: 01

KEYNOTE LEGEND

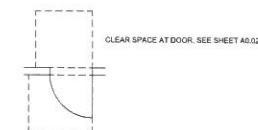
- 01 MODULE LINE, TYP.
- 02 ROOF OVERHANG ABOVE, TYP.
- 03 LOWER CASEWORK WITH ACCESSIBLE SPIN; SEE 15A8.3 AND GARBAGE DISPOSAL; SEE PLUMBING DWGS
- 04 UPPER CASEWORK SEE 15A8.2
- 05 WALL MOUNTED HVAC SPLIT SYSTEM; SEE MECHANICAL DRAWINGS FOR ADDITIONAL INFO.
- 06 RECESSED PAPER TOWEL DISPENSER AND WASTE DISPOSAL.
- 07 REFRIGERATOR, N.L.C.
- 08 FLUSH MOUNTED ELECTRICAL PANEL BOARD
- 09 X-BRACE ABOVE TYP.; REFER TO STRUCTURAL DRAWINGS
- 10 (E) DOOR TO BE REMAINED
- 11 RITEVISION PARTITION WITH METAL SIDING REMOVED; SEE DETAIL 11A8.2

GENERAL NOTES

1. REFER TO SHEET A0.02 FOR FINISH SCHEDULE.
2. PLACE (2) PERMANENT METAL IDENTIFICATION LABELS ON EACH MODULE.
3. PROVIDE OCCUPANCY LOAD CAPACITY SIGN PER CBC 1504.3
4. EXTERIOR PROJECTIONS ARE TO BE FIRE PROTECTED UNLESS COMPLIED WITH SECTION 105.2 AND 106.
5. ALL DOORS SHALL BE MEASURED 4" CLEAR FROM THE ADJACENT WALL U.G.N.

PLAN LEGEND

- 1 HOUR RATED WALL, 5/8" GYPSUM BOARD ON EACH SIDE
- 0000.2 DOOR PER SCHEDULE, SEE SHEET A0.02
- 0 WINDOW PER SCHEDULE, SEE SHEET A0.02
- RM ID NEW TACTILE ROOM ID SIGN, SEE DETAIL 01A0.03
- D S NEW DOOR SIGN, SEE DETAIL 06A0.03
- FE SEMI RECESSED FIRE EXTINGUISHER CABINET WITH MAX 4" PROJECTION AND FIRE EXTINGUISHER, 5 LBS DRY CHEMICAL WITH 2A:10BC U.L. RATING, LOCATED NO MORE THAN 4' ADJACENT TO THE MAIN EXIT DOOR, NOT LOCKABLE



01 FLOOR PLAN
SCALE: 1/4" = 1'-0"

