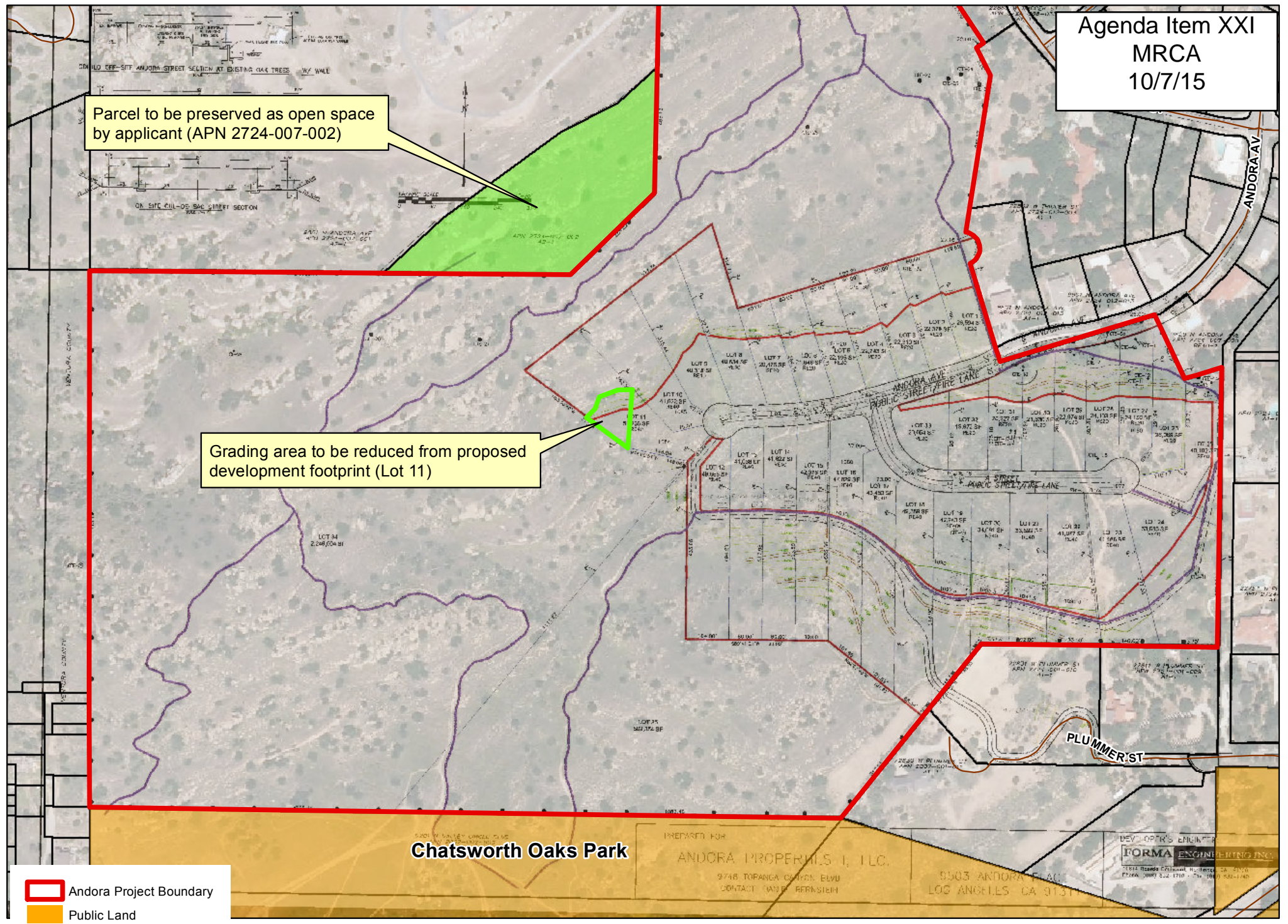


Parcel to be preserved as open space by applicant (APN 2724-007-002)

Grading area to be reduced from proposed development footprint (Lot 11)



Chatsworth Oaks Park

PREPARED FOR  
ANDORA PROPERTIES I, LLC.  
9748 TOPANGA CANYON BLVD  
CONTACT: (310) 311-1111

DEV. OWNER'S ENGINEER  
**FORMA ENGINEERING INC.**  
17814 Rossmore Ct., Suite 100, Northridge, CA 91320  
TEL: (818) 222-1710 FAX: (818) 222-1740

- Andora Project Boundary
- Public Land
- APN 2724-007-002

### Andora Project

