

DEMO NOTES

1. FINAL ALIGNMENT WILL BE FLAGGED IN FIELD PRIOR TO ANY CLEARING BY GENERAL CONTRACTOR, TRAIL BUILDER CONTRACTOR, ARBORIST.
2. ALL IMPROVEMENT AREAS REQUIRE CLEAR AND GRUBBING.
3. PRIOR TO STARTING WORK LANDSCAPE ARCHITECT SHALL MARK TREES TO BE PROTECTED PER TREE PROTECTION DETAIL.
4. TREES FOR REMOVAL WILL BE FLAGGED IN FIELD BY PROJECT LANDSCAPE ARCHITECT AND ARBORIST.

⚠ RIP AND RESTORE TRAIL PER SECTION 2911: SOIL PREPARATION AND SECTION 2922: HYDROSEEDING IN THE SPECIFICATIONS.

⚠ REMOVE EXISTING CHAIN LINK FENCE

LEGEND

EXISTING CONDITIONS

- EXISTING PARK TRAILS AND PATHWAYS
- EXISTING PATH TO BECOME PART OF P2P TRAIL
- PROPERTY LINE
- EXISTING FENCE
- INDEX CONTOURS (5')
- MINOR CONTOURS (1')

PROPOSED IMPROVEMENTS

- N 6' WIDE NATURAL SURFACE TRAIL
- D 6' WIDE DG TRAIL
- G 10' WIDE DG TRAIL
- C 6' WIDE COLORED CONCRETE ACCESSIBLE SIDEWALK (SEE NOTE 24 SHEET C1.3)
- 2 RAIL LODGE POLE FENCE
- TRAIL MAINTENANCE - ADD DRAIN DIP



PARK TO
PLAYA TRAIL
STOCKER
CORRIDOR

LOS ANGELES, CA

PHASE 100% CDs

REVISIONS

NO	DATE	ITEM

REGISTRATION:



REVIEWED: RA/GM

DRAWN: JP/GM

11-213 5.30.2014

PROJECT NO. DATE

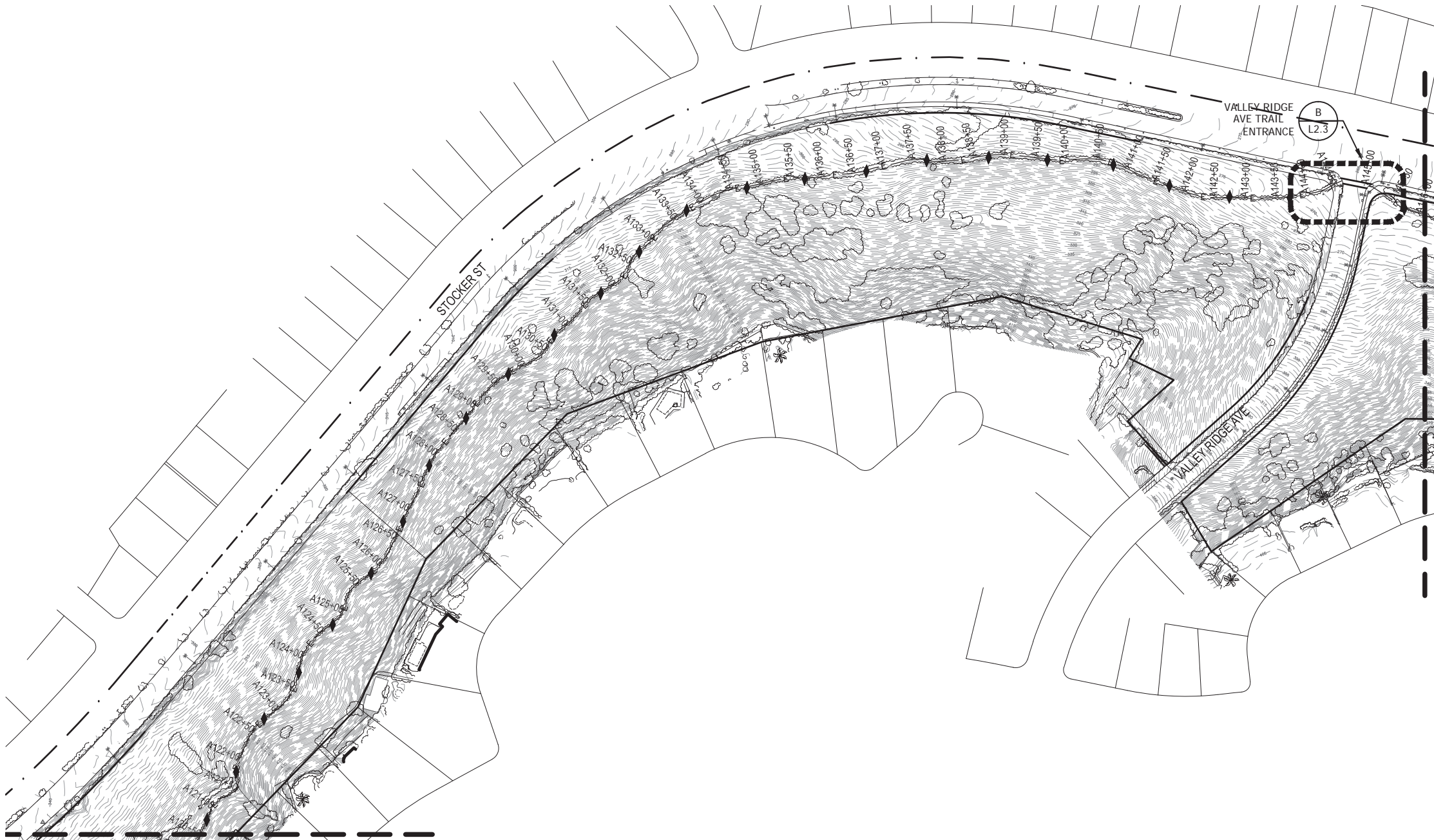
LANDSCAPE PLAN

LAYOUT &
SITE
IMPROVEMENTS

LS 140423001
SHEET NO.

L2.1

100% PLANS, NOT FOR CONSTRUCTION



MATCHLINE SHEET L2.1

MATCHLINE SEE BELOW

Attachment
MRCA Item IX
October 1, 2014

- DEMO NOTES**
- 1. FINAL ALIGNMENT WILL BE FLAGGED IN FIELD PRIOR TO ANY CLEARING BY GENERAL CONTRACTOR, TRAIL BUILDER CONTRACTOR, ARBORIST.
 - 2. ALL IMPROVEMENT AREAS REQUIRE CLEAR AND GRUBBING.
 - 3. PRIOR TO STARTING WORK LANDSCAPE ARCHITECT SHALL MARK TREES TO BE PROTECTED PER TREE PROTECTION DETAIL.
 - 4. TREES FOR REMOVAL WILL BE FLAGGED IN FIELD BY PROJECT LANDSCAPE ARCHITECT AND ARBORIST.

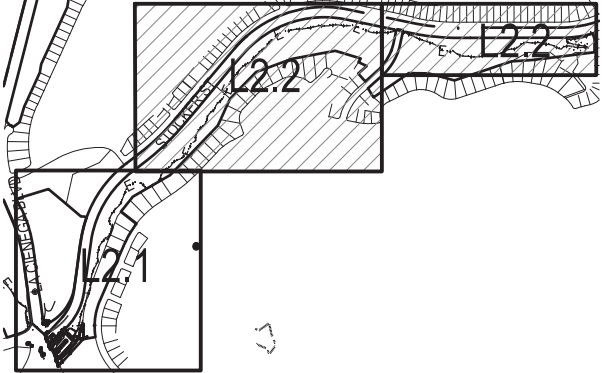
LEGEND

- EXISTING CONDITIONS**
- EXISTING PARK TRAILS AND PATHWAYS
 - EXISTING PATH TO BECOME PART OF P2P TRAIL
 - PROPERTY LINE
 - EXISTING FENCE
 - INDEX CONTOURS (5')
 - MINOR CONTOURS (1')

- PROPOSED IMPROVEMENTS**
- N 6" WIDE NATURAL SURFACE TRAIL
 - D 6" WIDE DG TRAIL
 - G 10" WIDE DG TRAIL
 - C 6" WIDE COLORED CONCRETE ACCESSIBLE SIDEWALK (SEE NOTE 24 SHEET C1.3)
 - 2 RAIL LODGE POLE FENCE
 - TRAIL MAINTENANCE - ADD DRAIN DIP

CLIMBING SWITCHBACK WITH WALLS
PRESIDIO DRIVE TRAIL ENTRANCE

KEY MAP



1 INCH
0 50 100 200

100% PLANS, NOT FOR CONSTRUCTION



448 S. Hill Street Suite 501
Los Angeles, CA 90013
p:213.489.7443 f:213.489.7444

**PARK TO
PLAYA TRAIL
STOCKER
CORRIDOR**

LOS ANGELES, CA

PHASE 100% CDs

REVISIONS

NO DATE ITEM

REGISTRATION:



REVIEWED: RA/GM

DRAWN: JP/GM

11-213 5.30.2014

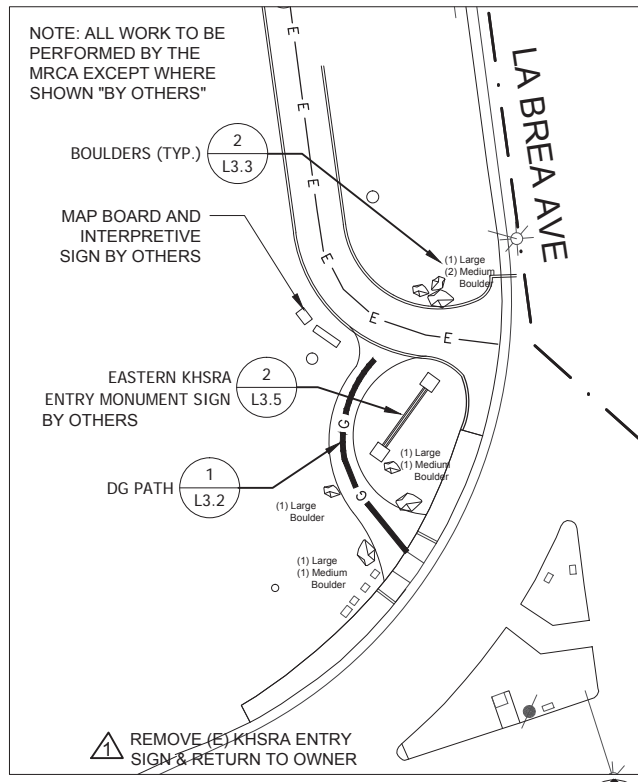
PROJECT NO. DATE

LANDSCAPE PLAN

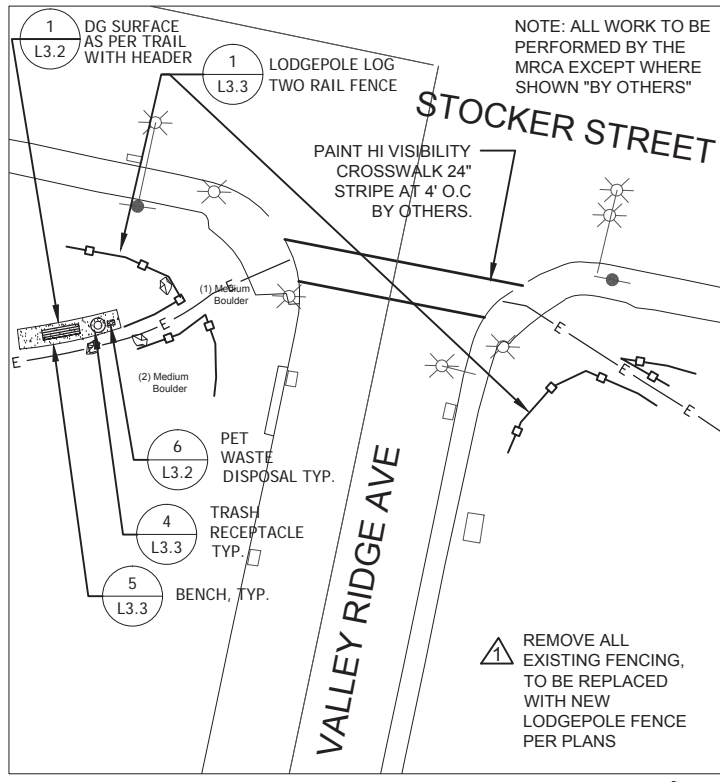
**LAYOUT &
SITE
IMPROVEMENTS**

LS 140423001
SHEET NO.

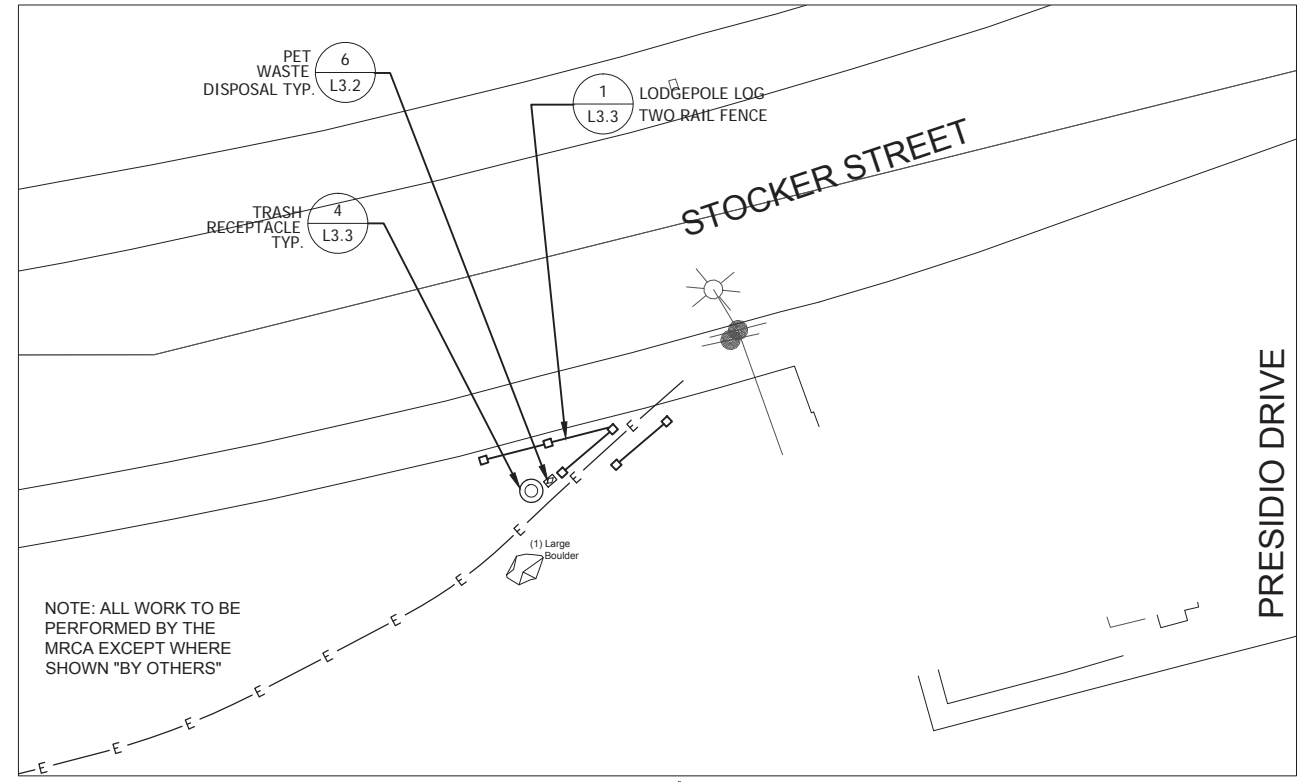
L2.2



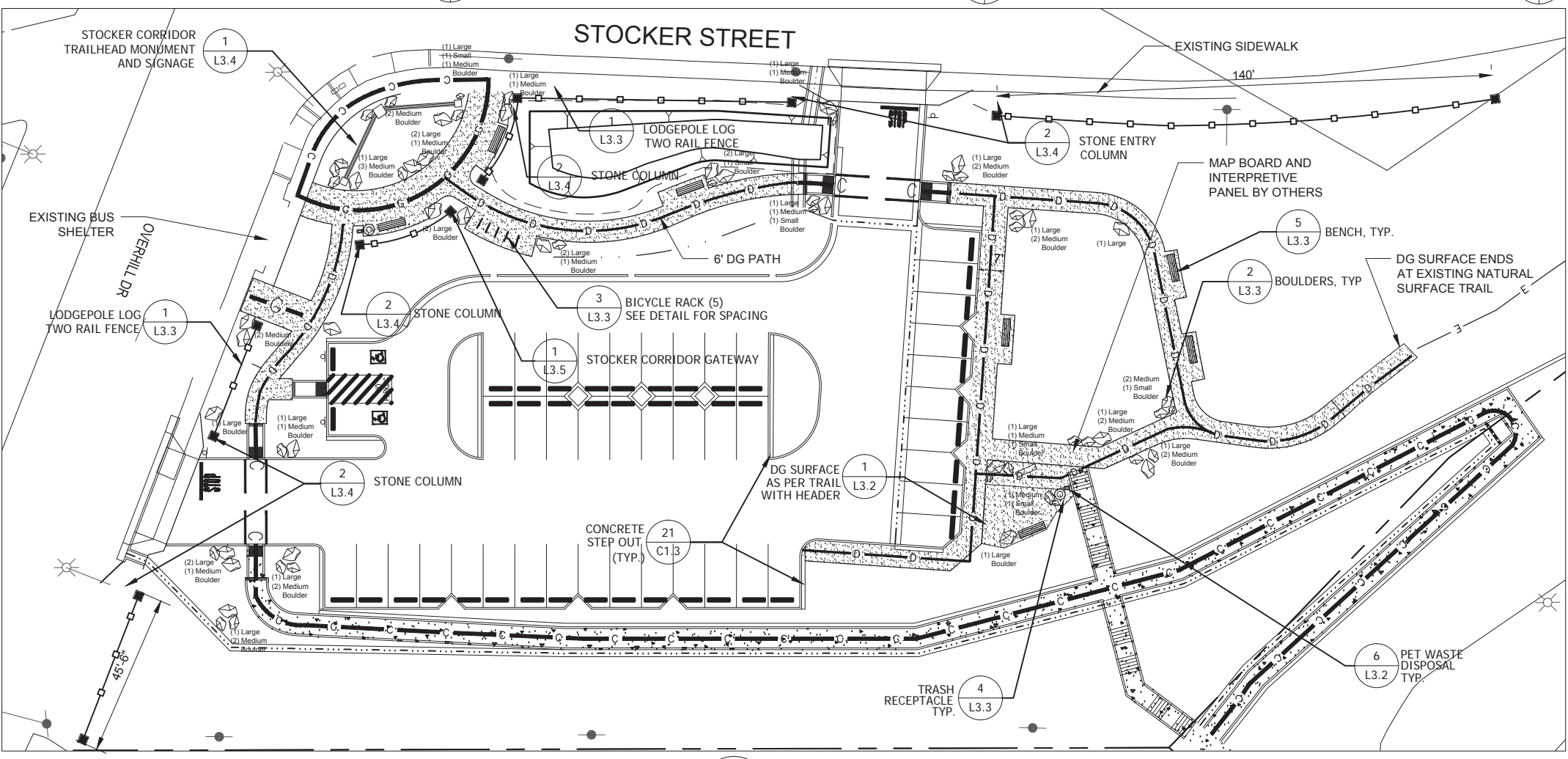
A EASTERN KHSRA GATEWAY ENTRANCE
SCALE: 1" = 20' - 0"



B VALLEY RIDGE AVE TRAIL ENTRANCE
SCALE: 1" = 20'



C PRESIDIO DRIVE TRAIL ENTRANCE
SCALE: 1" = 20'



D STOCKER TRAILHEAD SITE FURNISHINGS
SCALE: 1" = 20'

PROPOSED IMPROVEMENTS

- D 6' WIDE DG TRAIL (1 L3.2)
- G 10' WIDE DG TRAIL (1 L3.2)
- C 6' WIDE COLORED CONCRETE ACCESSIBLE SIDEWALK (SEE NOTE 24 SHEET C1.3)
- LODGEPOLE LOG TWO RAIL FENCE (1 L3.3)

SITE FURNISHING LEGEND

- BENCH (5 L3.3)
- BIKE RACK (3 L3.3)
- STONE ENTRY COLUMN (2 L3.4)
- STOCKER CORRIDOR TRAILHEAD MONUMENT AND SIGN (1 L3.4)
- STOCKER CORRIDOR GATEWAY (1 L3.5)
- BOULDER (2 L3.3)
- TRASH RECEPTACLE (4 L3.3)
- PET WASTE DISPOSAL (6 L3.2)
- EASTERN KHSRA ENTRY MONUMENT SIGN (2 L3.5)

Attachment
MRCA Item IX
October 1, 2014

**PARK TO
PLAYA TRAIL
STOCKER
CORRIDOR**

LOS ANGELES, CA

PHASE		100% CDs
REVISIONS		
NO	DATE	ITEM

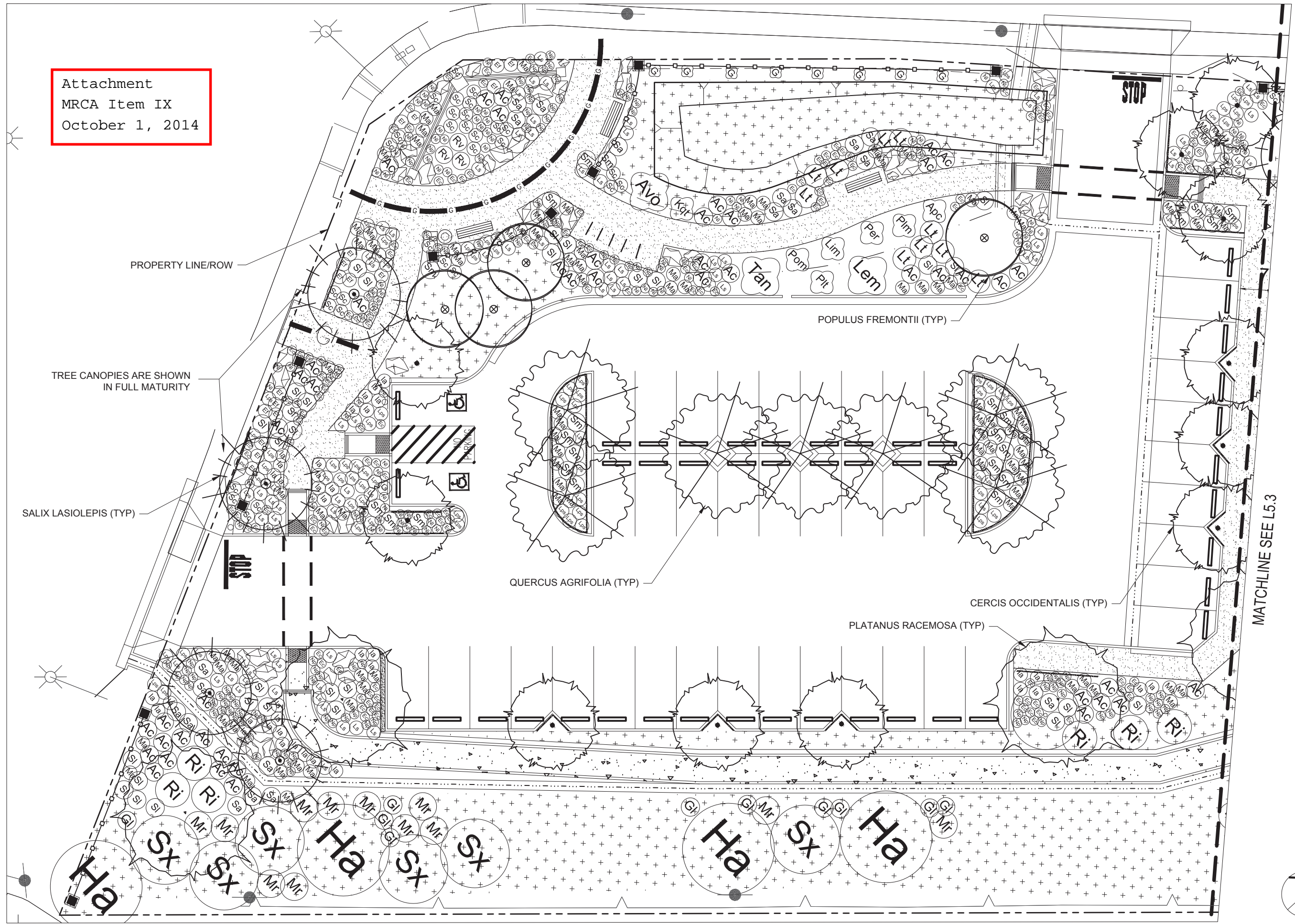


REVIEWED:	RA/GM
DRAWN:	JP/GM
11-213	5.30.2014
PROJECT NO.	DATE

LANDSCAPE PLAN

**TRAIL
ENLARGEMENTS**

LS 140423001
SHEET NO.



Attachment
MRCA Item IX
October 1, 2014

PROPERTY LINE/ROW

TREE CANOPIES ARE SHOWN
IN FULL MATURITY

SALIX LASIOLEPIS (TYP)

POPULUS FREMONTII (TYP)

QUERCUS AGRIFOLIA (TYP)

PLATANUS RACEMOSA (TYP)

CERCIS OCCIDENTALIS (TYP)

MATCHLINE SEE L5.3

A STOCKER TRAILHEAD - WEST END

SCALE: 1" = 10'

PLANTING NOTES AND LEGEND: SEE SHEET L5.1

100% PLANS, NOT FOR CONSTRUCTION



448 S. Hill Street Suite 501
Los Angeles, CA 90013
p.213.489.7443 f.213.489.7444

PARK TO PLAYA TRAIL STOCKER CORRIDOR

LOS ANGELES, CA

PHASE 100% CDs

REVISIONS

NO	DATE	ITEM

REGISTRATION:



REVIEWED: RA/GM

DRAWN: JP/GM

11-213 5.30.2014
PROJECT NO. DATE

LANDSCAPE PLAN

PLANTING PLANS

LS 140423001
SHEET NO.

L5.2

USE 3"-4" OF MULCH THROUGHOUT THE UNDERSTORY OF THE FRUIT TREE AREA

MATCHLINE SEE L5.2

STOCKER TRAILHEAD - EAST END

SCALE: 1" = 10'

100% PLANS, NOT FOR CONSTRUCTION



LOS ANGELES, CA

PHASE	100% CDs
-------	----------

REVISIONS

NO	DATE	ITEM
----	------	------

REGISTRATION:



REVIEWED: RA/GM

DRAWN: JP/GM

11-213 5.30.2014

PROJECT NO. _____ DATE _____

LANDSCAPE PLAN

LS 140423001
SHEET NO.

L5.3