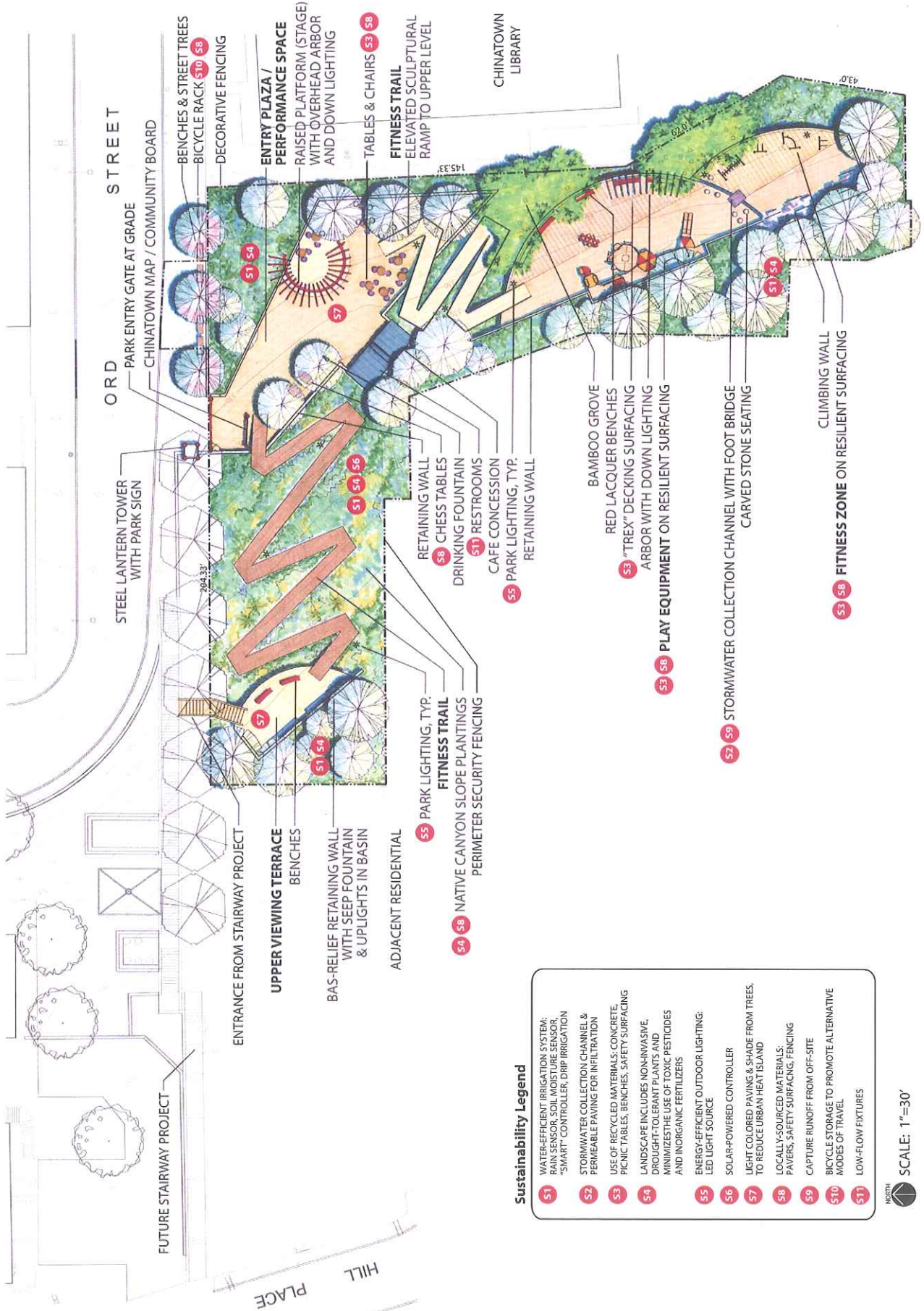


Attachment
MRCA Item XIII
April 2, 2014

Ord & Yale Park aka Chinatown Vertical Park Project		
Project Description:		
Project would develop a park on a vacant blighted hillside adjacent to the Chinatown Library that would connect the community's multi-family residences with its commercial and institutional corridors. Park amenities would include benches, street trees, park lighting, raised platform, tables, chairs, elevated sculptural ramp, stairs, a view terrace, retaining walls, restrooms, a drinking fountain, cafe concession, fitness equipment, play structures, cultural artwork, and landscaping		
Total Estimated Cost for Site Acquisition, Pre-Construction, Recreation Features & Major Support Amenities, Gardens & Pedestrian Linkages		\$8,249,705
Total Funding Sources		
State Park Proposition 84	\$4,999,705	
City of Los Angeles Proposition K	\$1,500,000	
Developer Contribution in lieu of Prop 1C Grant funds	\$800,000	
	\$7,299,705	\$ (7,299,705)
Funding Gap		\$950,000



Sustainability Legend

- S1 WATER-EFFICIENT IRRIGATION SYSTEM; RAIN SENSOR, SOIL MOISTURE SENSOR, "SMART" CONTROLLER, DRIP IRRIGATION
- S2 STORMWATER COLLECTION CHANNEL & PERMEABLE PAVING FOR INFILTRATION
- S3 USE OF RECYCLED MATERIALS; CONCRETE, PICNIC TABLES, BENCHES, SAFETY SURFACING
- S4 LANDSCAPE INCLUDES NON-INVASIVE, DROUGHT-TOLERANT PLANTS AND MINIMIZE THE USE OF TOXIC PESTICIDES AND INORGANIC FERTILIZERS
- S5 ENERGY-EFFICIENT OUTDOOR LIGHTING; LED LIGHT SOURCE
- S6 SOLAR-POWERED CONTROLLER
- S7 LIGHT COLORED PAVING & SHADE FROM TREES, TO REDUCE URBAN HEAT ISLAND
- S8 LOCALLY-SOURCED MATERIALS; PAVERS, SAFETY SURFACING, FENCING
- S9 CAPTURE RUNOFF FROM OFF-SITE
- S10 BICYCLE STORAGE TO PROMOTE ALTERNATIVE MODES OF TRAVEL
- S17 LOW-FLOW FIXTURES



SCALE: 1"=30'

THE COMMUNITY REDEVELOPMENT AGENCY OF THE CITY OF LOS ANGELES

<p>CALIFORNIA ENVIRONMENTAL QUALITY ORIGINAL FILED</p> <p>NOTICE OF EXEMPTION FEB 19 2010</p> <p style="text-align: center;">(Article 5, Section 15062 – CRA/LA CEQA Guidelines)</p>		
<p>To: County Clerk, County of Los Angeles 12400 E. Imperial Highway Norwalk, California 90650</p>		<p>LOS ANGELES COUNTY CLERK</p> <p>Date: February 19, 2010</p>
<p>Lead Agency: Community Redevelopment Agency of the City of Los Angeles (CRA/LA) 354 South Spring Street Los Angeles, California 90013</p>		
<p>Project Title Ord & Yale Street Park</p>		
<p>Project Location and Redevelopment Project: APN 5407025017. The project site is located south of Ord Street, between Hill Place and Hill Street in the Chinatown Redevelopment Project Area, City of Los Angeles</p>		
<p>Description of nature, purpose and beneficiaries of project: The project would develop a park on a vacant area that would connect an existing multi-family residential building with the commercial area of Chinatown. Park amenities would include benches, street trees, park lighting, raised platform, tables, chairs, elevated sculptural ramp, stairs, a view terrace, retaining walls, restrooms, a drinking fountain, a café concession, fitness equipment, and play structures.</p>		
<p>Name of person or entity carrying out the project Community Redevelopment Agency of the City of Los Angeles</p>		
<p>EXEMPT STATUS: (check one) CRA/LA CEQA Guidelines</p> <p><input type="checkbox"/> STATUTORY - Article 18, Section _____</p> <p><input checked="" type="checkbox"/> CATEGORICAL - Article 19, Sections 15303</p>		
<p>Justification for Project Exemption: The project involves new construction of small structures (i.e., benches, tables, chairs, sculptural ramp, stairs, retaining walls, restrooms, drinking fountain, café concession, fitness equipment, and play equipment) in an open space area adjacent to a multi-family residential complex. The development of a park and its accessory structures would not have an impact on traffic, air quality, noise, or other environmental impact categories.</p>		
<p>Name of Person Preparing Form: Teresa Li <i>Teresa Li</i></p>	<p>Title: Associate Planner</p>	<p>Date: February 19, 2010</p>