

Mia Lehrer + Associates:

Pacoima Wash Vision Plan – Santa Monica, CA

Veronica Padilla, Executive Director
Pacoima Beautiful
11243 Glenoaks Blvd., Suite. 1, Pacoima, CA 91331
818/899-2454 vpadilla@pacoimabeautiful.org

Los Angeles Riverfront Greenway Phase II – Los Angeles, CA

Jaime Contreras
City of Los Angeles Recreation & Cultural Facilities Program
200 N. Spring St. Suite 2305, Los Angeles, CA 90012
213/473-9712 Jaime.Contreras@lacity.org

Atwater Multi-Modal Bridge – Los Angeles, CA

Omar Brownson, Executive Director
Los Angeles River Revitalization Corporation
570 West Avenue 26, Suite 475, Los Angeles CA 90065
323/ 221-7800 obrownson@larivercorp.com

Tetra Tech:

Bikeway and Pedestrian Path for Los Angeles River Greenway

Client: City of Los Angeles Bridge Improvement Program. Mr. Scott Gibson, (213) 485-5101
Duration: 2010 – Construction Ongoing

Shell Beach Road Class I Bikeway

Client: City of Pismo Beach. Mr. Eric Eldridge, Project Manager (805) 773-7041
Duration: 2012 – Ongoing

Alta Madera Pedestrian Overcrossing Replacement

Client: City of Santa Clarita. Ms. Monica Heredia (661) 255-4332
Duration: 2011- 2012

Chambers Group:

Client: City of Chino. Vince Ledesma, (909) 591-9847
Project Start Date: 6/10/2010
Project Completion Date: 7/9/2010

Client: City of Irvine. Tess da Silva, (213) 430-4677

Project Start Date: 12/4/2006
Project Completion Date: 8/16/2007 (Actual)

Disclosure of Actions Taken Against the Professional

MRCA
Attachment
3/13/14
VI(f)

MLA Green Inc., d.b.a. Mia Lehrer+ Associates has not had any legal action taken against the firm.

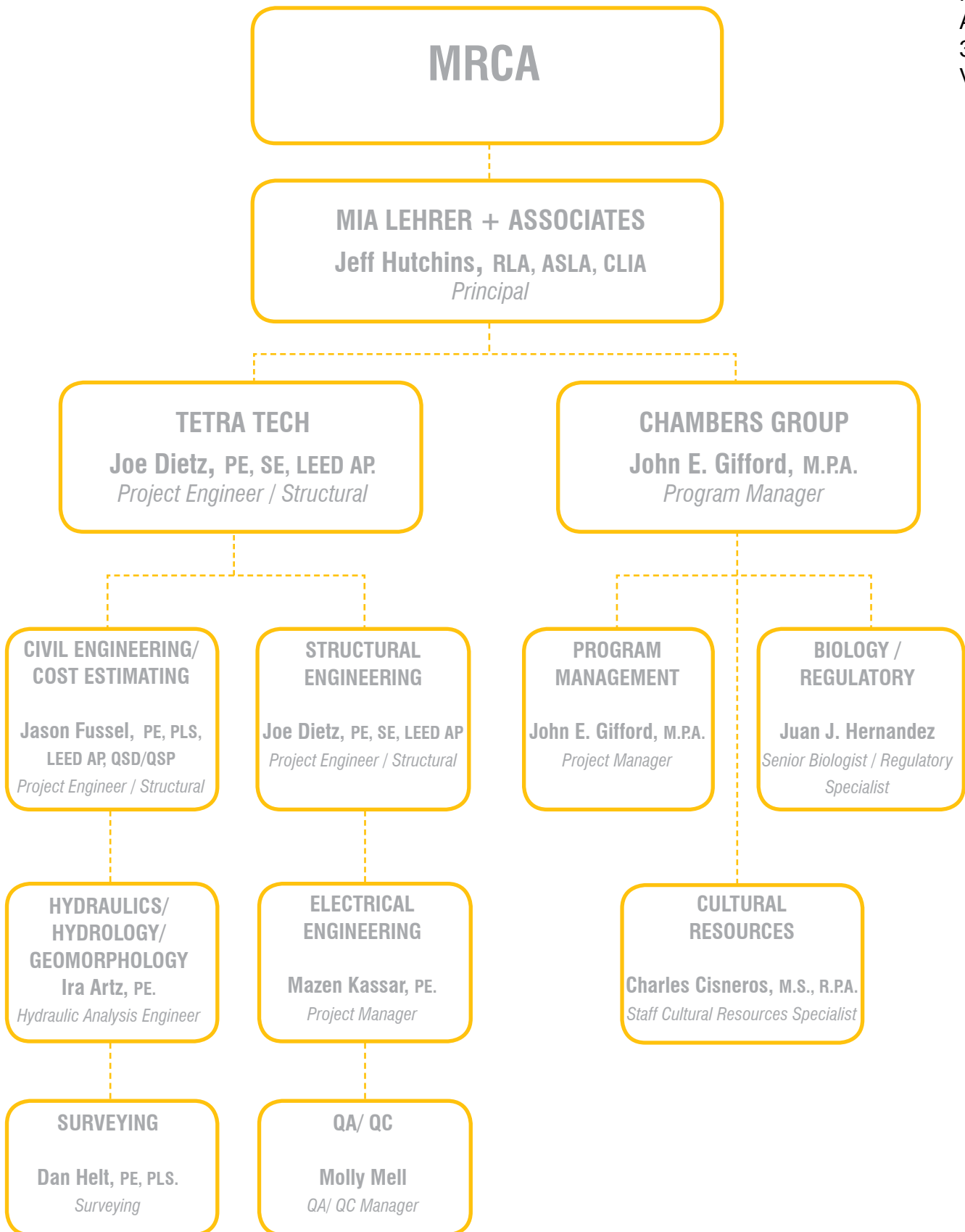
During the documentation process, Mia Lehrer+Associates and its sub-consultants make every effort to thoroughly document existing site conditions in an effort to inform the Schematic Design, Design Development and Construction Documentation process. During the bidding process, we make every effort to engage prospective contractor(s) to answer questions and provide information. During the construction process, it is typical for changes to the Contract Documents to be requested because of either unanticipated field conditions (i.e. below-surface conditions) or client requests in light of changing needs. If a change order is submitted, the Mia Lehrer+Associates team will evaluate the requested change and work with the client and contractor identify ways to minimize additional costs.

03

PROJECT TEAM

Team Organization Chart

MRCA
Attachment
3/13/14
VI(f)



Landscape Architecture / Stakeholder and Community Outreach / Planting and Irrigation System Design: Mia Lehrer + Associates

Team Lead / Project Landscape Architect: Jeff Hutchins, RLA, ASLA, CLIA. Principal.

Jeff Hutchins will serve as overall project manager and client contact. Jeff will coordinate the activities of the consultant team, lead the effort to produce the illustrative schematic design plan and planting and irrigation system plans and specifications. Jeff will provide QA/QC for the planting and irrigation system design drawings.

Stakeholder and Community Outreach: Jan Dyer, RLA, ASLA. Principal.

Jan Dyer will lead the stakeholder and community outreach effort by creating the outreach list, overseeing the coordination of the stakeholder and community outreach meetings, and presenting at outreach meetings.

Civil / Structural / Geomorphology / Geotechnical / Electrical / Cost Estimating: Tetra Tech

Civil Engineering / Cost Estimating: Jason Fussel, PE, PLS, LEED AP, QSD/QSP. Project Engineer / Surveyor.

Jason Fussel will coordinate the survey work for the project as well as lead the civil engineering and cost estimating work for the Class I bike path.

Structural Engineering: Joe Dietz, PE, SE, LEED AP. Project Engineer / Structural.

Joe Dietz will serve as the overall project manager on behalf of Tetra Tech. In this role, he will coordinate the engineering and documentation of the Class I bike path, participate in the outreach process, and coordinate the submittal of documents for public agency approval. He will also lead the structural engineering of the project, focused on coordination and design of the bridge crossings.

Hydraulics / Hydrology / Geomorphology: Ira Artz, PE. Hydraulic Analysis Engineer.

Ira Artz will provide hydraulic analysis to support the design of the proposed bridges.

Electrical Engineering: Mazen Kassar, PE. Project Manager.

Mr. Kassar will lead the electrical engineering scope of work for the project.

Surveying: Dan Helt, PE, PLS. Surveying

Dan Helt will support the civil engineering and surveying scope of work for the project.

QA/QC of Tetra Tech work: Molly Mell, QA/QC Manager.

Molly Mell will provide QA/QC for the engineering drawings for the Class I bikeway.

**Environmental Consulting:
Chambers Group**

Program Management: John E. Gifford, M.P.A. Program Manager.

John Gifford will serve as project manager for the environmental scope of work. In this role he will coordinate and oversee the production of the environmental documentation.

Biology / Regulatory: Juan J. Hernandez. Senior Biologist / Regulatory Specialist
Juan Hernandez will lead the biological portion of the environmental documentation.

Cultural Resources: Charles Cisneros, M.S., R.P.A. Staff Cultural Resources Specialist
Charles Cisneros will lead the cultural portion of the environmental documentation.

Tetra Tech has served over 5,000 different clients since 1966, successfully solving design and construction challenges through our innovative approaches to “real world” design and construction activities. Our clients include a diverse base of municipalities, public, and private sector transportation and transit agencies, as well as residential, commercial, and industrial developers located in the U.S. and internationally. Tetra Tech’s reputation as a leader in consulting engineering is validated by Top 10 ratings annually by *Engineering-News Record*.

Tetra Tech has extensive experience in preliminary analysis, preparation of plans, specifications, and estimate (PS&E), project management, construction observation, and construction management for various types of public works related projects including, but not limited to, bikeway and street improvements, grading, drainage, bridge and structural design, traffic analysis and design, transportation engineering and planning, mapping and survey services, CADD and GIS, water quality, and construction management services.

Tetra Tech develops creative and cost-effective designs that address the site-specific concerns unique to each project. We will guide your project from conception through construction completion with our suite of full-service capabilities. Tetra Tech team has a large portfolio of current relevant project experience that will benefit the Pacoima Wash Mountain Bikeway Project, since we can apply our knowledge and experience at the outset of the project.

Representative Projects

The representative project descriptions provided below serve as a sampling of projects that validate the depth of our team’s expertise in urban bikeway design similar to what will be required with this project.

We encourage potential clients to contact our references to get a firsthand account of the level of service and expertise our team provides.

BIKEWAY AND PEDESTRIAN PATH FOR LOS ANGELES RIVER GREENWAY

Tetra Tech prepared the Plans, Specifications, and Estimate (PS&E) for a ***new bikeway and pedestrian path along the Los Angeles River channel*** from Winnetka Avenue to Mason Avenue. As part of the design, the ***existing concrete-lined channel was modified to incorporate underpasses*** at Van Owen Avenue and Mason Avenue. The ***underpasses include ramps that pass under the bridges*** with sufficient overhead clearance for cyclists. Tetra Tech prepared a 2-D hydraulic model to study the effects the new section will have on waving and ramping patterns, ***in accordance with U.S. Army Corps of Engineers requirements***. The project included preparation of bikeway plans and profiles, retaining wall design, signing and striping, lighting plans, and decorative path construction. An artistic rendering was also prepared to illustrate how the completed project will appear. Tetra Tech is currently providing construction bid support to the City of Los Angeles.

SHELL BEACH ROAD CLASS I BIKEWAY

The Tetra Tech team is currently designing a “total street” reconstruction of 18 blocks of Shell Beach Road in the City of Pismo Beach. The ***project incorporates a new Class I Bikeway along an existing Caltrans right-of-way*** (Highway 1). In addition, the project includes ***replacement of aging utilities***, including: a new 10-inch water line, new 8-inch reclaimed water line, undergrounding power and communication lines, and new storm drain improvements.

More importantly, the project ***incorporates new way-finding and streetscape enhancements*** including: ***pavement enhancements at crosswalks and intersections, full ADA compliance***, street furniture and landscape improvements (incorporating Low Impact Development techniques).

The project challenges mitigated by Tetra Tech include ***connections to future bikeway improvements***, designing around existing utility corridors (including an 18-inch regional water line, and idle twin 8-inch oil lines), ***coordinating improvements with Caltrans while determining the legal boundaries***, and presenting the various design options to the various stakeholders in the area.

ALTA MADERA PEDESTRIAN OVERCROSSING REPLACEMENT

Tetra Tech performed planning, structural design, and construction phase services to **replace the existing pedestrian overcrossing (POC)** over Alta Madera Drive. The **POC is located on the City's network of multi-use "paseo" pathways**. Constructed in 1979, the timber superstructure showed signs of insect infestation, dry rot, and delamination of the glue laminated girders. The project team was tasked with defining an approach to replace the decaying structure.

During the planning stage of the project, Tetra Tech studied the feasibility of repair and replacement alternatives. Tetra Tech provided estimates of probable construction cost, guidance on current design standards, and several design concepts. The preferred alternative consisted of a single-span configuration with a prefabricated steel truss superstructure.

In spring of 2011, Tetra Tech initiated the geotechnical investigation and preparation of structural **plans, specifications, and estimates to replace the structure**. Through continued partnership, Tetra Tech and City engineers **delivered a project within cost that increased safety and restored alternative access to schools, neighborhood parks, and local businesses** in Santa Clarita.



Public agencies and businesses have been relying on Chambers Group, Inc. (Chambers Group) to keep them in compliance with applicable federal, state, and/or local environmental laws, regulations, and guidelines since 1978. In fact, **the majority of our work is from repeat clients who trust us to deliver scientific objectivity, environmental expertise, and defensible technical documentation to meet stringent agency regulations.**

No California Environmental Quality Act (CEQA) document prepared by Chambers Group has ever been successfully challenged—a direct result of our proven **expertise** in interpreting and advising on complex environmental legislation and regulations. Additionally, **our strong working relationships with regulatory agencies are advantageous for clients to swiftly obtain required permits and project approvals.**

Maximizing project schedules and cost efficiencies, Chambers Group is a **one-stop source for a full complement of in-house planning and natural science technical environmental staff.** We will prepare the appropriate CEQA or National Environmental Policy Act (NEPA) document with resources for special studies; prepare required resource agency permit applications (401, 404, 1602), prepare Mitigation Plans, and monitor construction activities for compliance.

Chambers Group is currently ranked on the ENR Top Environmental Firms list and the Zweig Hot Firm list for 2013.

Our staff of over 100 dedicated professionals have successfully prepared hundreds of environmental and planning reports and studies in full compliance with these and other legislative policies:

- NEPA
- CEQA
- Endangered Species Act (ESA)
- National Historic Preservation Act (NHPA)
- Archaeological Resources Protection Act (ARPA)
- Native American Graves Protection and Repatriation Act (NAGPRA)
- Resource Conservation and Recovery Act (RCRA)
- Clean Water Act (CWA)
- Clean Air Act (CAA)

A **certified Disabled Veteran Business Enterprise (DVBE)** and leader in our niche of the industry, our corporate headquarters is in Santa Ana with regional offices in Los Angeles, San Diego, Redlands, and El Centro, California, and Reno, Nevada. Services include:

- Environmental and urban planning
- Regulatory permitting/coordination
- Biological, cultural, and marine and aquatic resources
- Construction mitigation monitoring
- Restoration/reclamation
- Geographic Information Systems (GIS)

Chambers Group services the following market sectors:

- Development
- Education
- Energy
- Federal
- Mining
- Public Works
- Renewable Energy
- Telecommunications
- Transportation
- Water Resources

Two of Mia Lehrer+Associates' three team members have MBE / WBE / OBE status. Mia Lehrer+Associates (ML+A) is a certified Minority Business Enterprise / Women Business Enterprise (MBE / WBE) by the City of Los Angeles. ML+A is also a certified Disadvantaged / Minority / Women Business Enterprise (DBE / MBE / WBE) by the City of Los Angeles as required under the U.S. Department of Transportation, and is listed in the California Unified Certification Program (CUCP) under DBE's. Chambers Group is certified by the California Department of General Services (DGS) as a Disabled Veteran Business Enterprise (DVBE). Each of these current certificates is included for review.

BOARD OF PUBLIC WORKS
MEMBERS

- CYNTHIA M. RUIZ
PRESIDENT
- JULIE B. GUTMAN
VICE PRESIDENT
- PAULA A. DANIELS
PRESIDENT PRO-TEMPORE
- ERNESTO CARDENAS
COMMISSIONER
- VALERIE LYNNE SHAW
COMMISSIONER
- JAMES A. GIBSON
EXECUTIVE OFFICER

CITY OF LOS ANGELES
CALIFORNIA



ANTONIO R. VILLARAIGOSA
Mayor

JOHN L. REAMER, JR.
Inspector of Public Works
and
Director

BUREAU OF
CONTRACT ADMINISTRATION
Office of Contract Compliance
1149 S. BROADWAY, SUITE 300
LOS ANGELES, CA 90015
(213) 847-1922

<http://bca.lacity.org>

Ms. Esther Margulies
Mia Lehrer & Associates
3780 Wilshire Blvd. Ste. 250
Los Angeles, CA 90010

January 29, 2009
File No. - 8724
Ethnicity - Hispanic American
Phone No. - (213) 384-3844

28

**RE: MINORITY/WOMEN BUSINESS ENTERPRISE
(MBE/WBE) RECERTIFICATION APPROVAL**

Dear Ms. Margulies:

Based on a thorough review of the submitted documents and pursuant to the provisions of the Department of Transportation (U.S.D.O.T.) Rules and Regulations 49 CFR, Part 26, we are pleased to inform you that your firm has been recertified as a **Minority/Women Business Enterprise (MBE/WBE)** and has been placed in the City of Los Angeles DBE/MBE/WBE directory as a firm specializing in:

NAICS Codes

- 541310
- 541320

Description

- Architectural Services
- Landscape Architectural Services

You may review your firm's information in the City of Los Angeles DBE/MBE/WBE database at <http://bca.lacity.org>.

This certification is valid for five (5) years from the date of this letter. If after five (5) years you wish to be certified by the City of Los Angeles and have not received recertification documents, please contact this office. If there are any changes in ownership, control, or work category of your firm during the certification period, you are required to notify this office of those changes in writing. Also, please include your file number on each page of correspondence relating to these matters.

The City reserves the right to withdraw this certification if at any time it is determined certification was knowingly obtained by false, misleading or incorrect information. The City also reserves the right to request additional information and/or conduct on site visits at any time during the certification period to verify any documentation submitted with your application. By accepting certification, the firm of **Mia Lehrer & Associates** hereby consents to the examination of its books, records and documents by the City.

AN EQUAL OPPORTUNITY - AFFIRMATIVE ACTION EMPLOYER

Mia Lehrer & Associates
January 29, 2009
Page 2

Should you have any questions, please contact Kim Fitzpatrick at (213) 847-2644 or e-mail at kim.fitzpatrick@lacity.org.

Sincerely,



HELMUT PEINDL, Certification Manager
Office of Contract Compliance
Bureau of Contract Administration

CALIFORNIA UNIFIED CERTIFICATION PROGRAM (CUCP)



August 12, 2011

Ms. Mia Lehrer
MLA Green, Inc.,
DBA Mia Lehrer & Associates
3780 Wilshire Blvd, Ste. 250
Los Angeles, CA 90010

**RE: DISADVANTAGED/MINORITY/WOMEN BUSINESS ENTERPRISE (DBE/MBE/WBE)
CERTIFICATION APPROVAL File No. - 8724**

Dear Ms. Lehrer:

We are pleased to advise you that after careful review of your application and supporting documentation, the City of Los Angeles has determined that your firm meets the eligibility standards to be certified as a **Disadvantaged/Minority/Women Business Enterprise (DBE/MBE/WBE)** as required under the U.S. Department of Transportation (U.S. DOT) Regulation 49 CFR Part 26, as amended.

30

Your firm will be listed in the California Unified Certification Program (CUCP) database of certified DBEs and the City of Los Angeles DBE/MBE/WBE directory under the following specific area(s) of expertise that you have identified on the business service form for contracting opportunities:

<u>NAICS Code</u>	<u>Description</u>
541320	Landscape Architectural Services

Your DBE certification applies only for the above code(s). You may review your firm's information in the CUCP DBE database which can be accessed at the California Unified Certification Program's website at www.californiaucp.com and the City of Los Angeles DBE/MBE/WBE database at <http://bca.lacity.org>. Any additions and revisions must be submitted to the City of Los Angeles for review and approval.

In order to assure continuing DBE status, you must submit annually a No Change Declaration with supporting documentation, which will be sent to you. Based on your annual submission that no change in ownership and control has occurred, or if changes have occurred, they do not affect your firm's DBE standing, the DBE certification of your firm will continue until or unless it is removed by our agency.

Also, should any changes occur that could affect your certification status prior to receipt of the Declaration, such as changes in your firm's name, business/ mailing address, ownership, management, or control, or failure to meet the applicable business size standards or personal net worth standard, please notify us immediately. DBE certification is subject to review at any time. Failure to submit forms and/or change of information will be deemed as failure to cooperate under Section 26.109 of the Regulations.


Your DBE certification status will be honored by all of the U.S. DOT recipients in California.

MLA Green, Inc.,
DBA Mia Lehrer & Associates
August 12, 2011
Page 2

Congratulations, and thank you for your interest in the California Unified Certification Program (CUCP). We wish you every business success and look forward to hearing from you if we may be of any assistance to you in this regard.

Should you have any questions, please contact Kelly H. Kim at (213) 847-2644 or e-mail at kelly.kim@lacity.org.

Sincerely,



HELMUT PEINDL, Certification Manager
Office of Contract Compliance
Bureau of Contract Administration



Governor Edmund G. Brown Jr.

Sep 13, 2013

DVBE APP

Supplier #16538
CHAMBERS GROUP INC
5 Hutton Centre Drive, Suite 750
SANTA ANA CA 92707

Dear Business Person:

Congratulations on your Disabled Veteran Business Enterprise (DVBE) certification with the State of California. Your business is now entitled to compete in the State's goal to spend three percent of its annual contracting dollars with DVBE businesses. For more information or to verify certification status, visit www.eprocure.dgs.ca.gov

Certification Period

From Sep 12, 2013 to Sep 30, 2014

Business Types

Service

Conflict of Interest for Current and Former State Employees

Prior to contract award, agencies will assure the vendor is in compliance with Public Contract Code, Section 10410 et seq. addressing conflict of interest for State employees or former employees.

Annual Submission Requirement

Submit copies of the ENTIRE federal tax return to the Office of Small Business and DVBE Services (OSDS). In addition to the business tax returns, each partner of a partnership business must also submit individual federal tax returns. Businesses that rent equipment to the State must submit individual federal tax returns for each disabled veteran owner within 90 days of the individual's tax return filing due date. If you have been granted a tax filing extension with the Internal Revenue Service, submit a copy of the extension form and annual financial statements; then, submit a copy of the tax return once filed.

Maintaining Your Online Certified Firm Profile

32

Visit www.eprocure.dgs.ca.gov/default.htm to update your certification profile. You may report changes to the following: mailing and principal office address; contact information; keywords and service areas; United Nations Standard Products and Services Codes, North American Industry Classification System (applicable only to Manufacturers). This certification may be impacted if you update information beyond the aforementioned. To report changes by mail, complete a "Certification Information Change" form located at www.documents.dgs.ca.gov/pd/smallbus/certchange.pdf

Certification Renewal

Please complete an online application at www.eprocure.dgs.ca.gov 90 days prior to the expiration date whether or not you receive a renewal notice. If you hold dual certifications, SB and DVBE certifications, you must renew both certifications at the same time. Please contact us at 800.559.5529, 916.375.4940 or by email at OSDSHelp@dgs.ca.gov if you have any questions.

Sincerely,

Office of Small Business and DVBE Services

PROCUREMENT DIVISION - Small Business & DVBE Services | State of California | State Consumer Services Agency
707 3rd Street, 1st Floor, Room 400 | West Sacramento, CA 95605 | t 916.375.4940 f 916.375.4950

04

FEE PROPOSAL



Billing Rates

President	\$235/ hr.
Principal	\$160/hr.
Senior Associate	\$145/ hr.
Associate	\$125/ hr.
Project Designer	\$100/ hr.

President will be billed at \$235.00 per hour, Principal at \$160.00 per hour, Senior Associate at \$145.00 per hour, Associate at \$125.00, and Project Designer at \$100.00. These rates are subject to increase as of December 31, 2014.

Reimbursable expenses are in addition to fees for professional services. Direct costs or reimbursable expenses are billed at cost plus a 15% processing fee. Reimbursable expenses related to the work of the project shall be billed at cost plus 15% and include the costs of:

38

- A. Copies of drawings including original plots, specification, reports, and estimates; photographic services, photocopying and photographic reproduction of drawings and other documents furnished or prepare in connection with the work of this Agreement. Below is in-house reproduction cost schedule:

8.5x11	b/w	0.10	Bond	1.10 sf
8.5x11	Color	1.00	Vellum	1.60 sf
11x17	b/w	0.20	Heavy Bond	1.60 sf
11x17	Color	2.00	Photo Paper	3.25 sf

- B. Postage, shipping and messenger expenses other than first class mail.
- C. International telephone and AT&T teleconference charges.
- D. All travel outside the Los Angeles area including taxis, parking, meals, hotel, visas, & airfare.
- E. Parking transit costs and mileage costs for meetings and site visits.
- F. Fees for consultants as approved in advance by the Client.
- G. Presentation quality perspectives or models.



**EXHIBIT A - SW
2013**

HOURLY CHARGE RATE AND EXPENSE REIMBURSEMENT SCHEDULE

Project Management

Project Manager 1	\$195.00
Project Manager 2	\$207.00
Sr Project Manager	\$250.00
Program Manager	\$297.00
Principal in Charge	\$310.00

Engineers

Engineering Technician	\$37.00
Engineer 1	\$96.00
Engineer 2	\$115.00
Engineer 3	\$130.00
Project Engineer 1	\$135.00
Project Engineer 2	\$165.00
Sr Engineer 1	\$170.00
Sr Engineer 2	\$175.00
Sr Engineer 3	\$210.00
Principal Engineer	\$300.00

Planners

Planner 1	\$104.00
Planner 2	\$115.00
Sr Planner 1	\$125.00
Sr Planner 2	\$151.00
Sr Planner 3	\$175.00

Designers & Technicians

CAD Technician 1	\$65.00
CAD Technician 2	\$75.00
CAD Technician 3	\$90.00
CAD Designer	\$100.00
Sr CAD Designer 1	\$118.00
Sr CAD Designer 2	\$145.00
CAD Director	\$150.00
Survey Tech 1	\$50.00

Health & Safety

H&S Administrator	\$95.00
Sr H&S Administrator	\$115.00
H&S Manager	\$145.00

Construction

Construction Project Rep 1	\$78.00
Construction Project Rep 2	\$85.00
Sr Constr Project Rep 1	\$100.00
Sr Constr Project Rep 2	\$115.00
Construction Manager 1	\$165.00
Construction Manager 2	\$185.00
Construction Director	\$233.00

General & Administrative

Project Assistant 1	\$67.00
Project Assistant 2	\$75.00
Project Administrator	\$95.00
Sr Project Administrator	\$110.00
Graphic Artist	\$130.00
Technical Writer 1	\$97.00
Technical Writer 2	\$124.00
Sr Technical Writer	\$155.00

Information Technology

Systems Analyst / Programmer 1	\$77.00
Systems Analyst / Programmer 2	\$115.00
Sr Sys Analyst / Programmer 1	\$130.00
Sr Systems Analyst / Programmer 2	\$196.00

Project Accounting

Project Analyst 1	\$90.00
Project Analyst 2	\$114.00
Sr Project Analyst	\$155.00

Reimbursable In-House Costs:

Photo Copies (B&W 8.5"x11")	\$ 0.15/Each
Photo Copies (B&W 11"x17")	\$ 0.40/Each
Color Copies (up to 8.5"x11")	\$ 2.00/Each
Color Copies (to 11"x17")	\$ 3.00/Each
Compact Discs	\$10/each
Large format copies	\$0.40 S.F.
Computer Usage: not to exceed	\$3.55/hour
Mileage-Company Vehicle	\$0.80/mile
Mileage-POV	\$0.55/mile*

*current GSA POV mileage rate subject to change

All other direct costs, such as production, special photography, postage, delivery services, overnight mail, printing and any other services performed by subcontractor will be billed at cost plus 15%.



Chambers Group hourly rates for professional services and support categories are indicated below subject to periodic revisions:

Regional Director	\$ 200.00
Program Director	\$ 185.00
Program Manager	\$ 175.00
Sr. Project Manager	\$ 145.00
Project Manager	\$ 124.00
Principal Biologist/Botanist	\$ 165.00
Senior Biologist/Botanist	\$ 135.00
Staff Biologist/Botanist 2	\$ 114.00
Staff Biologist/Botanist 1	\$ 103.00
Assoc. Biologist/Botanist	\$ 93.00
Asst. Biologist/Botanist	\$ 82.00
Principal Cultural Resources Specialist	\$ 139.00
Senior Cultural Resources Specialist	\$ 116.00
Staff Cultural Resources Specialist 2	\$ 104.00
Staff Cultural Resources Specialist 1	\$ 92.00
Assoc. Cultural Resources Specialist	\$ 79.00
Asst. Cultural Resources Specialist	\$ 65.00
Principal Environmental Planner	\$ 165.00
Senior Environmental Planner	\$ 135.00
Staff Environmental Planner 2	\$ 114.00
Staff Environmental Planner 1	\$ 103.00
Assoc. Environmental Planner	\$ 93.00
Asst. Environmental Planner	\$ 82.00
Principal Air/Noise Specialist	\$ 165.00
Senior Air/Noise Specialist	\$ 135.00
Staff Air/Noise Specialist 2	\$ 114.00
Staff Air/Noise Specialist 1	\$ 103.00
Assoc. Air/Noise Specialist	\$ 93.00
Asst. Air/Noise Specialist	\$ 82.00
GIS Analyst 3	\$ 125.00
GIS Analyst 2	\$ 105.00
GIS Analyst 1	\$ 89.00
Project Controls Specialist**	\$ 79.00
Technical Editor/Project Asst**	\$ 76.00
Word Processor**	\$ 66.00
Clerical/Technician**	\$ 55.00

**For non-exempt employees in these categories, overtime hours are billed equal to 1.5 times the standard hourly rate.

EXPERT DEPOSITION & TESTIMONY

Labor fees for litigation support with respect to depositions, presentations, and expert testimony will be billed at 2.0 times the normal hourly rate.

SUBCONTRACTOR & OTHER DIRECT COSTS

Subcontracted services and other direct costs to projects will be invoiced at cost plus 15%.

OFFICE REIMBURSABLE EXPENSES

Charges for communications such as telephone, fax, postage, overnight delivery, courier services, standard office equipment usage, costs for in-house binding materials and reproduction of reports, figures and color photos, and costs for personnel safety gear will be billed all inclusive at 3% of labor fees.

05

SCHEDULE / TIMELINE

Task 1.0: Programming and Site Analysis

- 1.1. Review Project-Related Data and Site Visit: The Consultant Team shall review project data including existing vision plans, planning documents, etc., and conduct a thorough site visit and documentation of the project area.
- 1.2. Attend Project Kick-Off Meeting: The Consultant Team shall attend a project kick-off meeting with the MRCA to review and refine the project goals, establish communication procedures, review scope needs, understand the project's goals and objectives, establish MRCA's budget expectations, confirm the project schedule with anticipated review times, confirm approach to environmental scope of work, discuss public agency approval strategy and stakeholder and community outreach strategy, and research and review utility record information.
- 1.3. Programming and Site Analysis: The Consultant Team shall undertake an analysis of the project area. Factors to be analyzed include:
 - 1.3.1. Landscape Architecture: Proximity of existing parks, schools and cultural facilities, existing bicycle routes and circulation patterns, potential sites for bridge crossings, potential locations for Class I bikeway.
 - 1.3.2. Civil Engineering: Existing Pacoima Wash flood control requirements, adjacent properties, street and freeway overpasses and crossings, and overall path connectivity and access issues.
 - 1.3.3. Environmental.
- 1.4. Site Analysis Diagrams and Presentation: The Consultant Team, led by ML+A, shall prepare diagrams depicting the salient issues which will inform the Schematic Plans for the project. The Consultant Team shall present the deliverables to the Client for review and comment.
- 1.5. Project Description: The Consultant Team shall develop a complete narrative and graphic Project Description (including project limits, purpose and need, logical termini, and independent utility) and prepare project area maps and cross-sections showing extent of proposed project.

Task 1.0 Meetings:

- One (1) Project Kick-Off Meeting
- One (1) Site Analysis Presentation

Task 1.0 Deliverables:

- Site Analysis Diagrams
- Project Narrative
- Maps and Cross-Sections showing the extent of the proposed project

Task 2.0: Schematic Plans

The Consultant Team shall develop a Schematic Design. The design will comply with Los Angeles County's Los Angeles River Master Plan Guidelines for Landscaping and Plant Palettes. The team will utilize design standards which equal or exceed the approved standards published by Caltrans in the Local Assistance Procedures Manual (LAPM) and the County of Los Angeles.

- 2.1. Illustrative Schematic Design Plan and Presentation: The Consultant Team shall develop an Illustrative Schematic Design Plan indicating proposed access points and crossings, layout of Class I bike path,

proposed bridge locations, planting areas and signage for presentation in stakeholder outreach meetings and Community Outreach Meeting No. 1. Inspiration images to convey the design intent shall also be prepared. The Consultant Team shall present the plan and other deliverables to the MRCA for review and comment.

- 2.2. Preliminary Schematic-level bikeway plan: The Consultant Team shall prepare schematic-level bikeway plan including horizontal and vertical alignment sketches, and identification of potential bridge locations. Plans will include:

2.2.1. Overall Hardscape Layout: Based on the approved Illustrative Schematic Design Plan, the Consultant Team shall identify and design the location of bridges, hardscape features such as fencing, bridge approaches, access points to path, signage and lighting.

2.2.2. Civil Engineering

2.2.3. Structural Engineering

2.2.4. Planting and Irrigation

- 2.3. Hydrologic and Hydraulic Data Report: The Consultant Team shall prepare a preliminary hydrologic and hydraulic data report for review by MRCA, City of San Fernando, County of Los Angeles Flood Control District, Caltrans and the Army Corps of Engineers.

2.3.1. Hydrologic Analysis: Previously developed discharge values will be reviewed for the Pacoima Wash along the project site. Potential available discharge data are available from County of Los Angeles Hydrology Section and the current FEMA Flood Insurance Study. Discharge values and sources will be reviewed and compared to the latest stream gage data for the Pacoima Walsh at the project site. These discharge values will be utilized as frequency events for use in hydraulic analyses.

2.3.2. Hydraulic Analysis: Utilizing the HEC-RAS hydraulic modeling software developed by the U.S. Army Corps of Engineers, a hydraulic model will be developed using the Pacoima Wash as-built, the newly acquired topography from Task 6.0, and the hydrologic discharges. The hydraulic model will extend from the spreading grounds just downstream of Interstate 5 and extend up to Lopez Debris Basin. The hydraulic model will include any variation in the main channel as well as all the existing bridge and culvert crossings. The Pacoima Walsh channel hydraulic model will be developed for the existing condition as well as the proposed conditions of adding bridge crossings, which may require in-channel piers. Where proposed bridge crossings require in-channel piers the appropriate debris loading per U.S. Army Corps of Engineers, Hydrology and Hydraulics Policy Memorandum No. 4, Debris Loading on Bridges and Culverts. The output from the hydraulic model will provide estimated differences in water surface elevations between the existing and proposed conditions. This information will be used to determine the size, type and shape of any in-channel piers to aid in minimizing their impact to the flows.

2.3.3. Report: A brief hydrologic and hydraulic report will be prepared to document the methodologies and assumptions used in the development of these analyses. The report will include the input parameters, the output data and a discussion of the results.

2.3.4. Permitting Assistance: Permits will likely be required from the US Army Corps of Engineers, Los Angeles County Flood Control and Caltrans. We will assist MRCA in obtaining the necessary permits by providing the required Hydraulic Analysis, assisting in completing the