

Atwater Multimodal Bridge

Los Angeles, CA

Size: 320 foot span
Completed: 2014
Project Team: Mia Lehrer, *President*
 Ben Feldmann, *Project Manager*
Client: Los Angeles River Revitalization Corporation (RRC)
 Omar Brownson
 323/221-7800

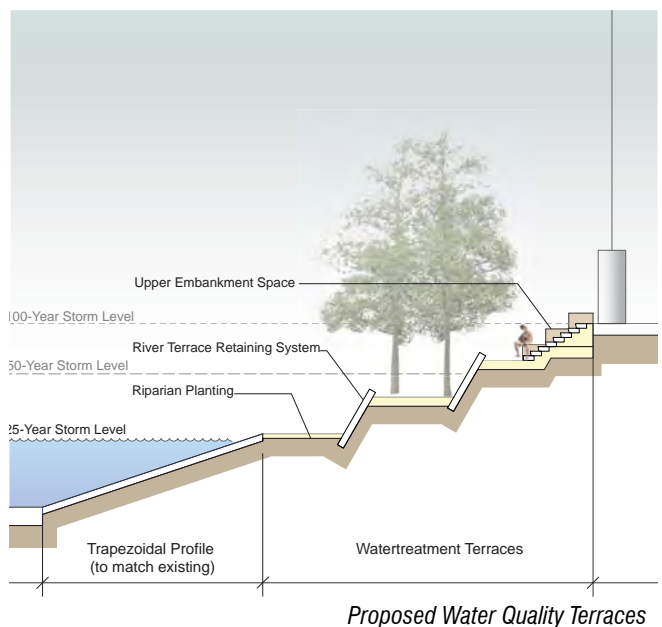
Working in conjunction with Buro Happold Los Angeles, Mia Lehrer + Associates has taken a lead role in the outreach process and site design for L.A.'s first bridge dedicated to connecting the L.A. River to its surrounding community. The bridge is designed to accommodate the safe passage of multiple modes of non-vehicular travel, including pedestrian, bicycle and equestrian uses. The 320-foot span bridge is integrated with the site to cause the least amount of disturbance to the soft-bottom channel which supports an existing riparian habitat.

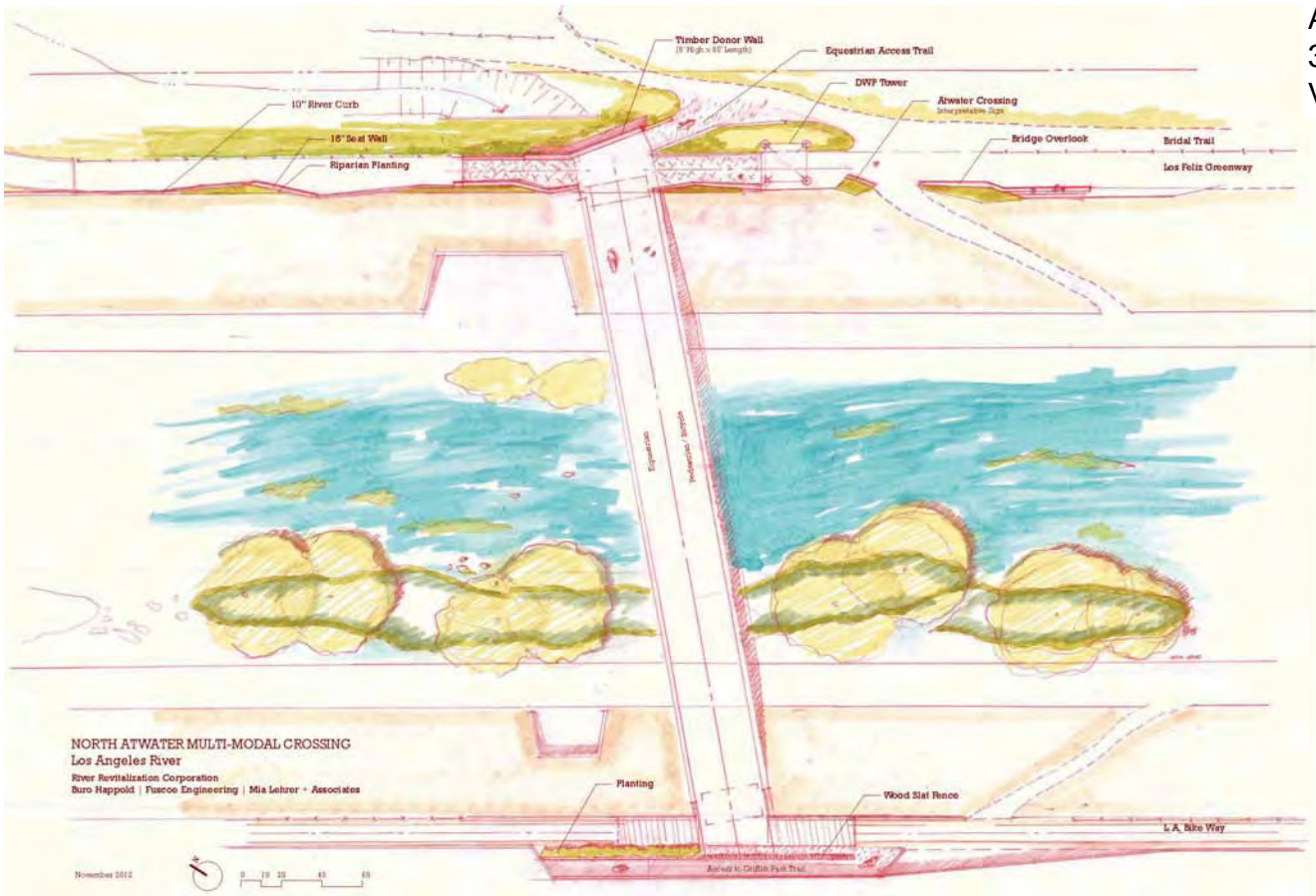
12

Throughout the early phases of design, a comprehensive community outreach effort was made via open house discussions and on-site events to include city agencies, community groups, district representatives and river constituencies, informing the design process to enhance the performance of the bridge and elevate its sensitivity. The sustainable features of the bridge include the use of regenerative energy, locally-sourced and renewable materials, and site-sensitive design enhancing the ecological function of the river.

ML+A is also exploring the eventual reconfiguration of the river channel itself to include water quality terraces to allow for the catchment and treatment of stormwater runoff while providing for additional areas of riparian habitat. The concept of these terraces focuses on the use of modular design for prefabricated scale-like retaining wall elements, allowing for the rapid production and ease of installation throughout other stretches of the river.

Upon completion, the Atwater Multimodal Bridge will serve as a catalyst for future river related projects and set the stage for streamlining the implementation process. The site will be prepared for construction spring of 2013.





Illustrative Site Plan



L.A. Riverfront Greenway Phase II Studio City, CA

Size: 5,930 linear feet
Completed: ongoing
Project Team: Mia Lehrer, *President*
Jeff Hutchins, *Project Manager*
Owner: City of Los Angeles Bureau of Engineering

Mia Lehrer + Associates led the design for Phase II of the Los Angeles Riverfront Greenway, a multi-use walking and bicycle recreation trail along a vertical channelized section of the Los Angeles River. Based on lessons learned from the Phase I effort, Phase II will extend the existing trail along three distinct reaches of the river. The scope of work for Phase II includes: seating and rest areas at entries to the trail, interpretive signage, bicycle racks, drinking fountains, native plant materials, retaining walls, and drainage structures that utilize low impact design (LID) strategies.

The sustainable features of the project include the use of plant material native to the Los Angeles river basin. ML+A utilized bioswale technology for to capture stormwater from the trail rather than drain water over the edge of the channel and into the river. The ML+A-designed drainage plan calls for draining water away from the river’s edge into bioswales that will filter stormwater and recharge the groundwater. Overflow from the bioswales drains into the river via perforated pipes.

The ML+A-designed interpretive signage will educate recreation enthusiasts about the plant material, wildlife, history and hydrology of the region, adding another dimension to the recreation experience.



Interpretive signage



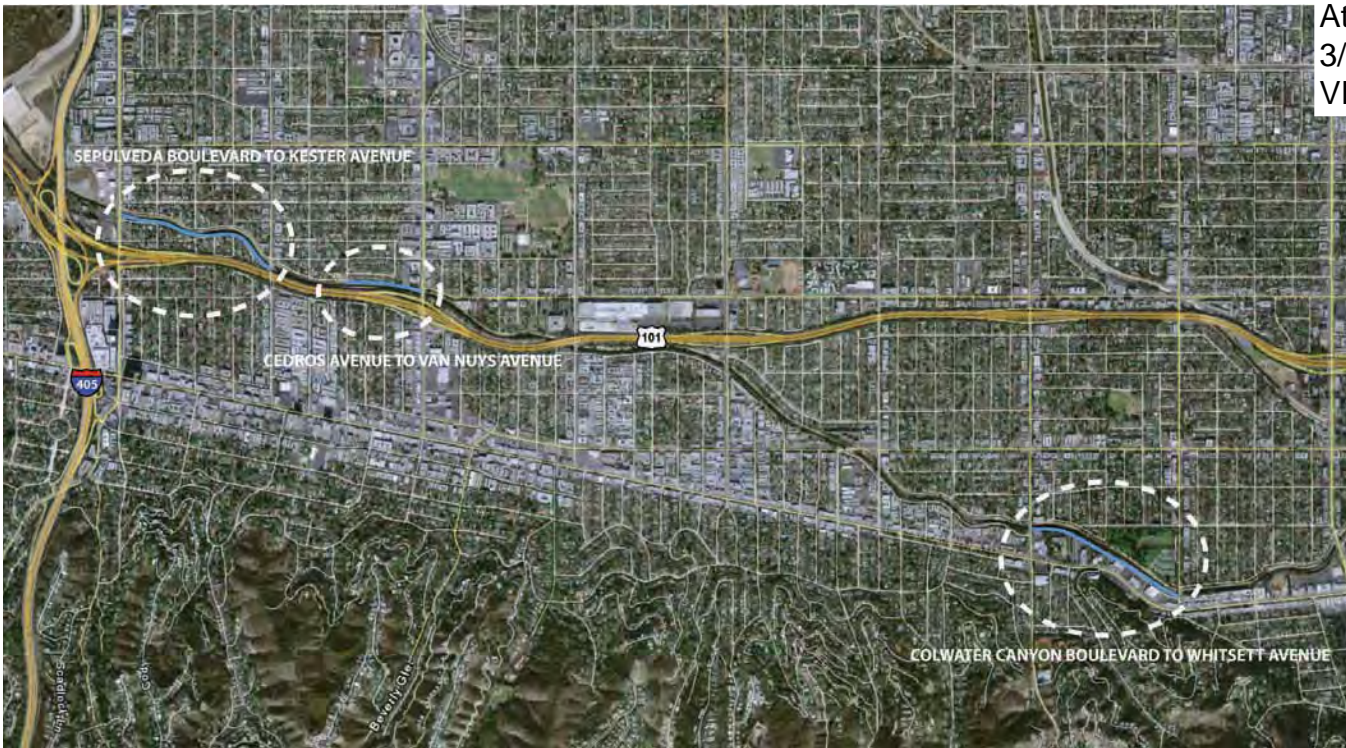
Entrance to the recreation trail



Existing Condition



Seating area at multi-use trail



LOS ANGELES RIVERFRONT GREENWAY PROJECT, PHASE II
Coldwater Canyon Avenue to Whitsett Avenue



- | | | |
|------------------|---|------------------------------|
| AMENITIES | 1 INTERPRETIVE SIGNAGE | 7 30" NATIVE SHRUB NOODLE |
| | 2 LIGHTING | 8 30" NATIVE GRASS NOODLE |
| | 3 BICYCLE RACK | 9 BIOFILTRATION SWALE |
| | 4 CHANNEL WALL | 10 GABION RETAINING WALL |
| WALLS | 5 CONCRETE RUBBLE RETAINING | 11 STORMWATER INTERCEPTION |
| | 6 GABION RETAINING WALL | |
| | 7 SEATWALL | VEGETATION |
| HARDSCAPE | 8 PERMEABLE ASPHALTIC CONCRETE | 12 30" NATIVE GRASS NOODLE |
| | 9 DECOMPOSED GRANITE | 13 30" NATIVE SHRUB NOODLE |
| | 10 DECORATIVE PAVING | 14 60" NATIVE SHRUB NOODLE |
| BMP | 11 30" BIOFILTRATION SWALE | 15 60" NATIVE SHRUB NOODLE |
| | 12 STORMWATER INTERCEPTION / IRRIGATION | 16 60" NATIVE HABITAT NOODLE |
| | | 17 60" NATIVE HABITAT NOODLE |

