

# MILTON STREET PARK

LOS ANGELES, CA

MOUNTAINS RECREATION & CONSERVATION AUTHORITY  
570 WEST AVENUE 26  
SUITE 100  
LOS ANGELES, CA 90065  
Fax: 323.221.9934  
Ph: 323.221.9944

MRCA  
Attachment  
March 13, 2014  
Agenda Item VI(b)

## Landscape Architect:



811 W. 7th Street  
Suite 430  
Los Angeles  
CA 90017  
Fax: 213.236.0001  
Ph: 213.236.0000

www.swagroup.com

## SubConsultants:

Civil Engineer  
PDS/MS  
888 South Flower Street, Suite 400  
Los Angeles, CA 90071  
(310) 223-1600  
(310) 223-1444 fax

Structural Engineer  
JRP  
8880 Center Drive, Suite 200  
Los Angeles, CA 90044  
(310) 855-1000  
(310) 855-6972 fax

Mechanical Engineer  
PDS  
3800 East Spring Street, 8th Floor  
Long Beach, CA 90805  
(562) 497-2886  
(562) 497-2882 fax

Interior Designer  
Associates  
38750 Bay Canyon Circle, Suite C  
Irvine, CA 92618  
(949) 441-6000  
(949) 441-6002 fax

## Discipline Stamp:

- 5
- 4
- 3
- 2
- 1

## Revisions



Scale 1"=20'-0"

Date  
May 25, 2013  
Phase  
PLAN CHECK SUBMITTAL  
Job Number  
MUTN801

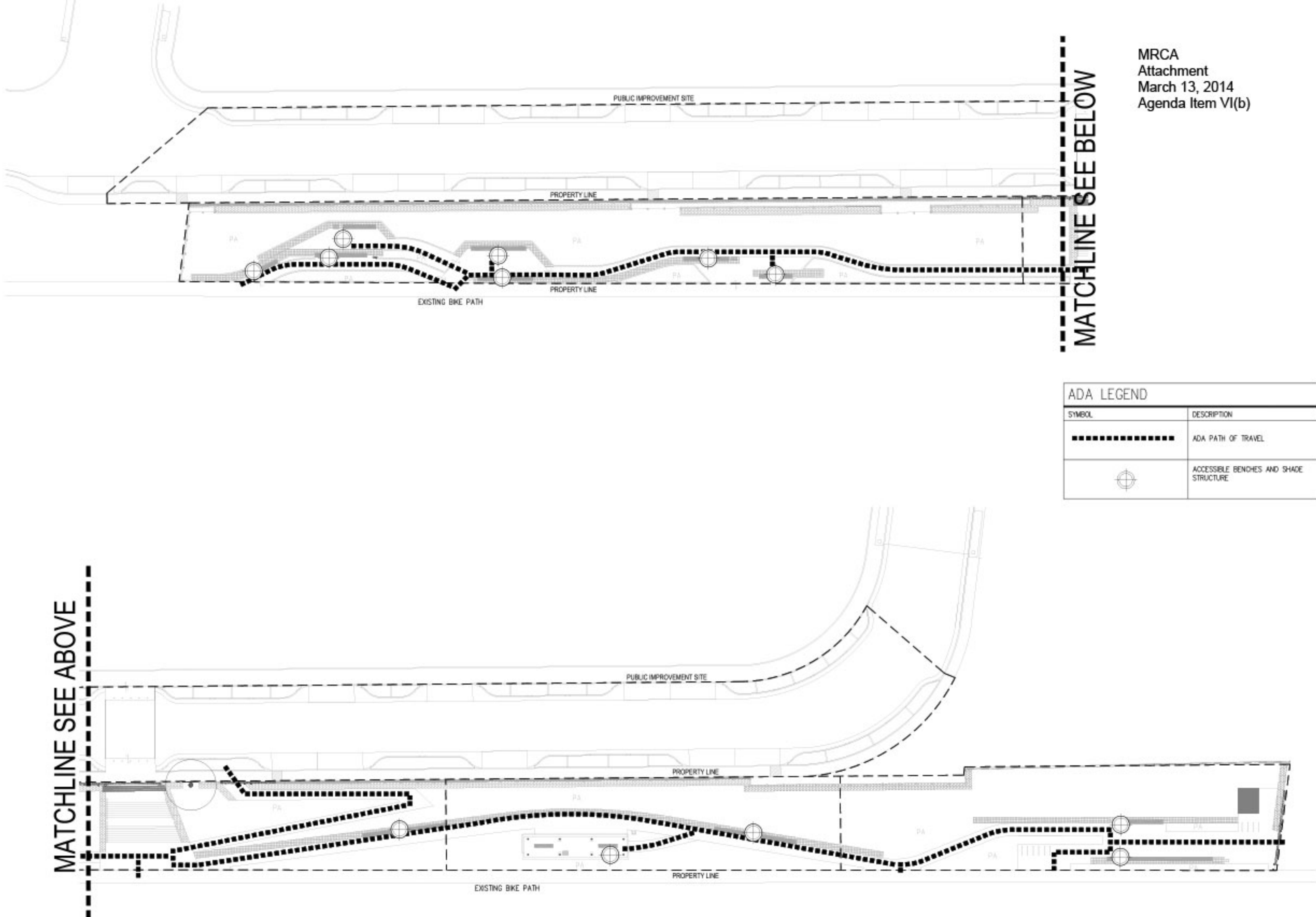
## Drawing Title

ADA PATH OF TRAVEL PLAN

## Drawing Number

L.O.03

©2013 SWA Group



ADA LEGEND	
SYMBOL	DESCRIPTION
	ADA PATH OF TRAVEL
	ACCESSIBLE BENCHES AND SHADE STRUCTURE



**MILTON STREET PARK**

LOS ANGELES, CA

MOUNTAINS RECREATION & CONSERVATION AUTHORITY  
570 WEST AVENUE 26  
SUITE 100  
LOS ANGELES, CA 90065  
Fax: 323.221.9934  
Ph: 323.221.9944

**Landscape Architect:**



Los Angeles  
Pasadena  
Laguna Beach  
Newport  
Orange  
San Francisco  
Shanghai

811 W. 7th Street  
Suite 430  
Los Angeles  
CA 90017  
Fax 213.238.9901  
Ph 213.238.9900

www.swagroup.com

**Subconsultants:**

**Contractor:**  
MCA  
4400 Wilshire Blvd, Suite 200  
Los Angeles, CA 90048  
(310) 204-4400  
www.mca.com

**Structural Engineer:**  
JEP  
1000 West Hill, Suite 200  
Los Angeles, CA 90024  
(310) 407-1100  
www.jep.com

**Electrical Engineer:**  
JEP  
1000 West Hill, Suite 200  
Los Angeles, CA 90024  
(310) 407-1100  
www.jep.com

**Water Engineer:**  
JEP  
1000 West Hill, Suite 200  
Los Angeles, CA 90024  
(310) 407-1100  
www.jep.com

**Discipline Stamp:**

5  
4  
3  
2  
1

**Revisions:**



Scale 1"=20'-0"

**Date:** May 26, 2011  
**Phase:** PLAN CHECK SUBMITTAL  
**Job Number:** 10750011  
**Author:**

**Drawing Title:**

PAVING PLAN

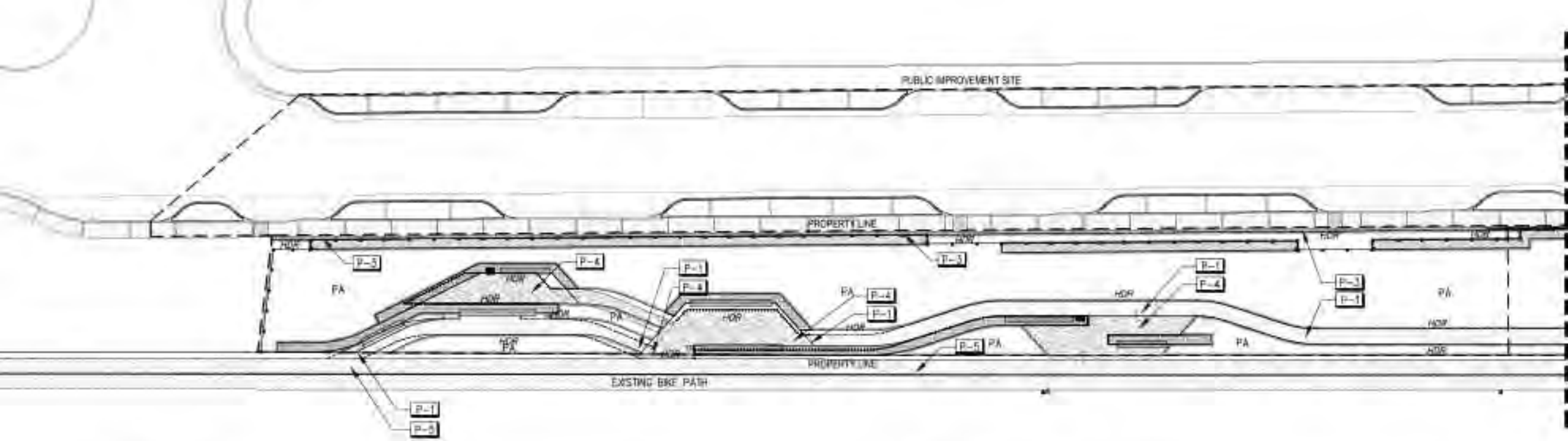
**Drawing Number:**

1.00

©2011 SWA Group

MRCA  
Attachment  
March 13, 2014  
Agenda Item VI(b)

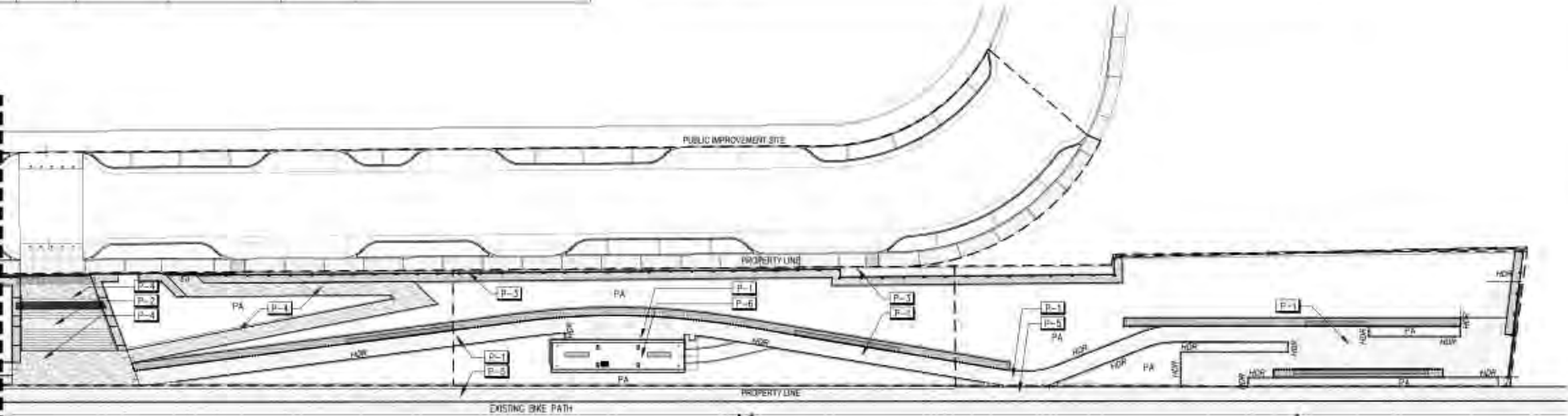
MATCHLINE SEE BELOW



SYMBOL	KEY	DETAIL/SHT	ITEM	MATERIAL	COLOR	FINISH/REMARKS
	P-1	DETAIL C SHEET L8.00	OG PAVING	4" THICK DECOMPOSED GRANITE W/ STABILIZER	GAIL MAT. PYRITE GOLD	DECOMPOSED GRANITE W/ NATRACL STABILIZING ORGANIC BINDER THAT'S NON-TOXIC SET IN TWO EQUAL LIFTS. MANUFACTURER: GAIL MATERIAL (851)667-8106
	P-2	DETAIL B SHEET L8.00	CONCRETE PAVING	4" THICK INTEGRAL COLORED CONCRETE	DAVIS COLORS MESA BLUFF #5447	POURED IN PLACE INTEGRAL COLORED CONCRETE PAVING W/ MED TOP CAST FINISH. REFER TO DETAIL AND SPECIFICATIONS. MANUFACTURER: DAVIS COLORS (800) 356-4848
	P-3	DETAIL F SHEET L8.00	GRAVEL PAVING	3/4" CRUSHED ROCKS	S.W.B. FEMIER GRAY	3/4" DIA. CRUSHED ROCK, 4" THICK COVERAGE. AVAIL. FROM SOUTHWEST BOULDERS: (877)792-7625
	P-4	DETAIL D SHEET L8.00	ARCH/RANDOM PAVING	FLAGSTONE	HI DESERT	PLACE FLAGSTONE IN RANDOM PATTERN, DO NOT CUT ENDS TO FIT IN UNIFORM PATTERN. THICKENED PIECE OF FLAGSTONE AT ALL PLANTING AND OG EDGE. SEE DETAIL AND SPECS. AVAIL. FROM BOURGET FLAGSTONE CO. (310)829-4010 EXT. 721
	NA	P-5	EXISTING ASPHALT PAVING	ASPHALT	-	PROTECT EXISTING ASPHALT IN PLACE DURING CONSTRUCTION

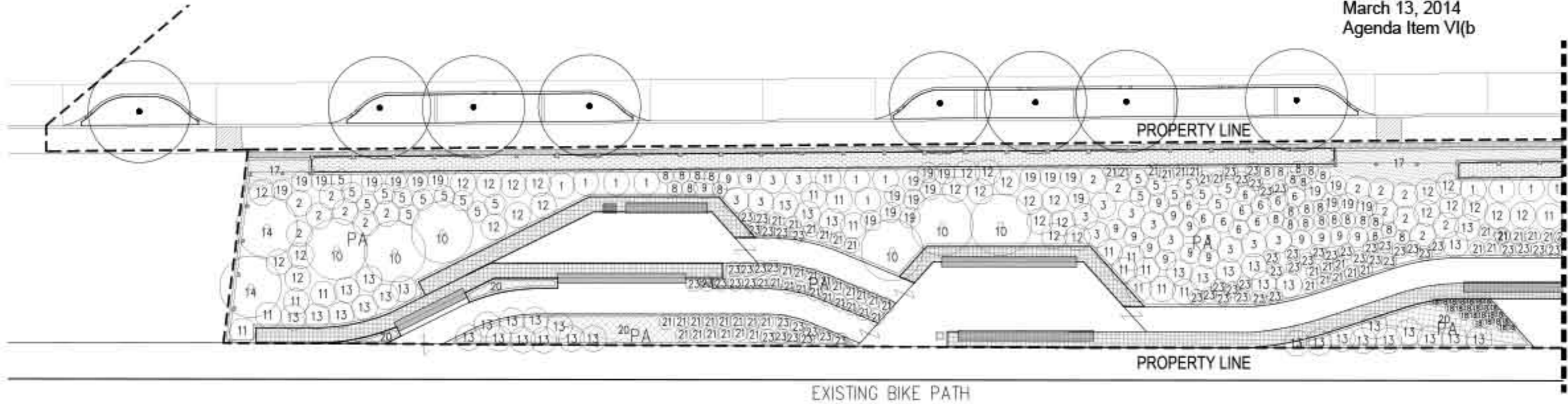
SYMBOL	KEY	DETAIL/SHT	ITEM	MATERIAL	COLOR	FINISH/REMARKS
	P-6	DETAIL A/B SHEET L8.07	WOOD DECK	TREX	COLOR: PORCH SPICED RUM 40% SPICED RUM 60%	AVAIL. FROM TREX (800)289-8739. TREX HIDEAWAY USE TO SECURE DECK MEMBERS. REFER TO DETAILS AND SPECIFICATIONS.
	NA	DETAIL A SHEET L8.00	CONCRETE PAVING CONTROL JOINTS - EXPANSION JOINT	NDN-EXTRUDED FILLER W/ SEALANT	SEALANT COLOR TO MATCH PAVING	REFER TO DETAIL AND SPECIFICATIONS
	NA	DETAIL A SHEET L8.00	CONCRETE PAVING CONTROL JOINTS - SAWCUT JOINT	NA	NA	1/8" SAWCUT JOINT, REFER TO DETAIL AND SPECIFICATIONS
	NA	DETAIL E SHEET L8.00	STEEL HEADER	METAL HEADER	COLOR: MANUFACTURER BLACK	1/4" X 5" HEADER W/ STAKES. POWDER COAT FINISH. PLACE STAKES 4'-0" O.C. REFER TO DETAIL AND SPECIFICATIONS
	NA	DETAIL H SHEET L8.00A	STEEL HEADER AT GABION	METAL HEADER	COLOR: BLACK	1/8" X 13" HEADER (PRIMERED AND PAINTED) WITH TWO COATS OF PAINT. REFER TO DETAIL AND SPECIFICATIONS

MATCHLINE SEE ABOVE





MATCHLINE SEE BELOW

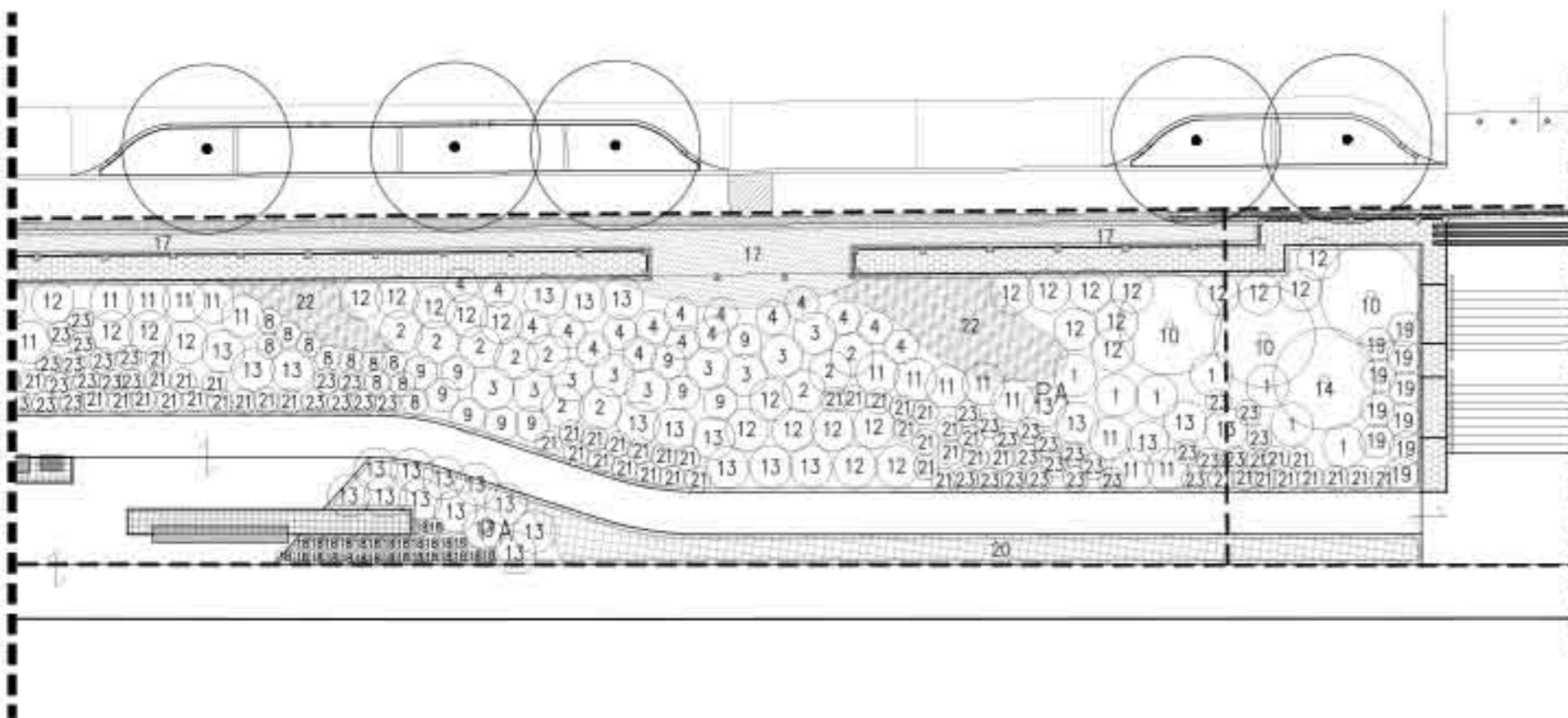


PLANTING LEGEND					
SYMBOL	BOTANICAL NAME	COMMON NAME	SIZE	SPACING	REMARKS
<b>TREES</b>					
	<i>Eucalyptus</i>	-	-	-	Existing tree
<b>VINES</b>					
	<i>Cajystegia macrostegia</i> 'Anacapa Peak'	Anacapa Peak Island Morning Glory	5 gal	As shown	Full, dense, symmetrical, well-rooted.

PLANTING LEGEND CONTINUED					
SYMBOL	BOTANICAL NAME	COMMON NAME	SIZE	SPACING	REMARKS
<b>SHRUBS</b>					
	<i>Atriplex lentiformis</i> 'Brewer'	Brewer Saltbush	1 gal 5 gal	As shown	Full, dense, symmetrical, well-rooted.
	<i>Artemisia californica</i>	California Sagebrush	1 gal 5 gal	As shown	Full, dense, symmetrical, well-rooted.
	<i>Baccharis pilularis</i> 'Pigeon Point'	Dwarf Coyote Brush	1 gal	As shown	Full, dense, symmetrical, well-rooted.
	<i>Encelia californica</i>	California Brittlebush	1 gal	As shown	Full, dense, symmetrical, well-rooted.
	<i>Eriogonum parvifolium</i>	Seacliff Buckwheat	1 gal	As shown	Full, dense, symmetrical, well-rooted.
	<i>Eriogonum fasciculatum</i>	California Buckwheat	1 gal	As shown	Full, dense, symmetrical, well-rooted.
	<i>Eriophyllum confertiflorum</i>	Golden Yarrow	1 gal	6" o.c.	Full, dense, symmetrical, well-rooted.
	<i>Lolium scoparium</i>	Deervetch	1 gal	As shown	Full, dense, symmetrical, well-rooted.
	<i>Lupinus esculentus</i>	Grape Soda Lupine	1 gal	As shown	Full, dense, symmetrical, well-rooted.
	<i>Rhus integrifolia</i>	Lemonade Berry	1 gal	As shown	Full, dense, symmetrical, well-rooted.
	<i>Salvia spiana</i>	White Sage	1 gal	As shown	Full, dense, symmetrical, well-rooted.
	<i>Salvia leucophylla</i>	Purple Sage	1 gal	As shown	Full, dense, symmetrical, well-rooted.
	<i>Salvia mellifera</i>	Black Sage	1 gal	As shown	Full, dense, symmetrical, well-rooted.
	<i>Sambucus mexicana</i>	Mexican Elderberry	1 gal	As shown	Full, dense, symmetrical, well-rooted.
<b>PERENNIALS/GRASSES</b>					
	<i>Achillea millefolium</i>	Western Yarrow	Hydroseed	As shown	Full, dense, symmetrical, well-rooted.
	<i>Agrostis patens</i>	Bent Grass	Sod	As shown	Full, dense, symmetrical, well-rooted.
	<i>Carex proserpicilis</i>	California Field Sedge	1 gal	6" o.c.	Full, dense, symmetrical, well-rooted.
	<i>Epilobium canum</i>	California Fuchsia	1 gal	As shown	Full, dense, symmetrical, well-rooted.
	<i>Elymus condensatus</i>	Giant Wild Rye	1 gal	As shown	Full, dense, symmetrical, well-rooted.
	<i>Leymus trichoides</i>	Beardless Wildrye	1 gal	5' o.c.	Full, dense, symmetrical, well-rooted.
	<i>Mimulus aurantiacus</i>	Bush Monkey Flower	1 gal	As shown	Full, dense, symmetrical, well-rooted.
	<i>Nassella pulchra</i>	Purple Needle Grass	1 gal	As shown	Full, dense, symmetrical, well-rooted.
	<i>Penstemon spectabilis</i>	showy penstemon	1 gal	As shown	Full, dense, symmetrical, well-rooted.

NOTE: PLANTS WILL BE REVIEWED IN THE FIELD PRIOR TO INSTALLATION BY LANDSCAPE ARCHITECT.

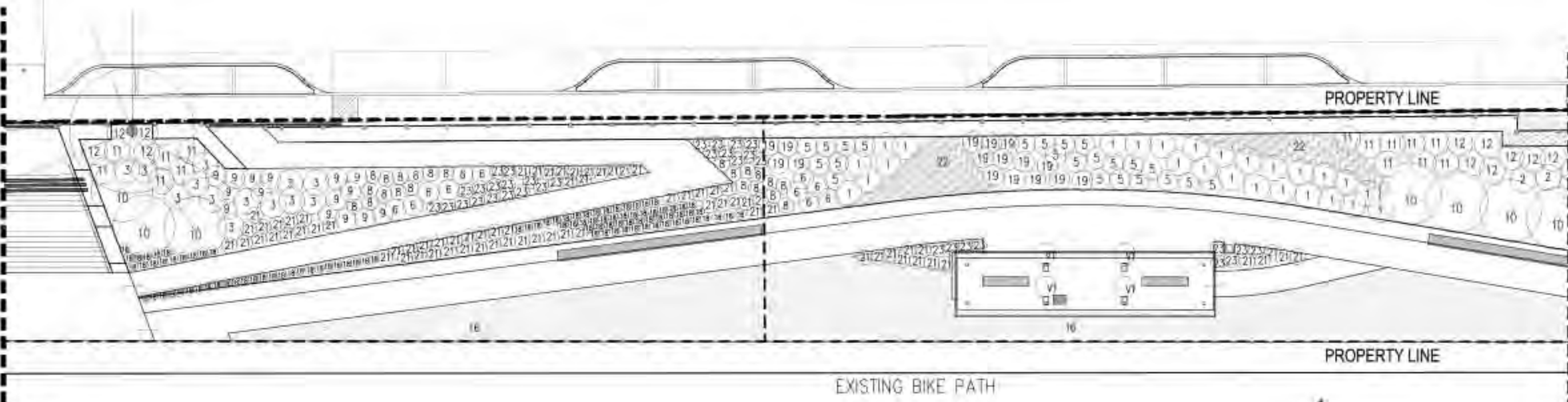
MATCHLINE SEE ABOVE



MATCHLINE SEE L6.01

MATCHLINE SEE L6.00

MATCHLINE SEE BELOW



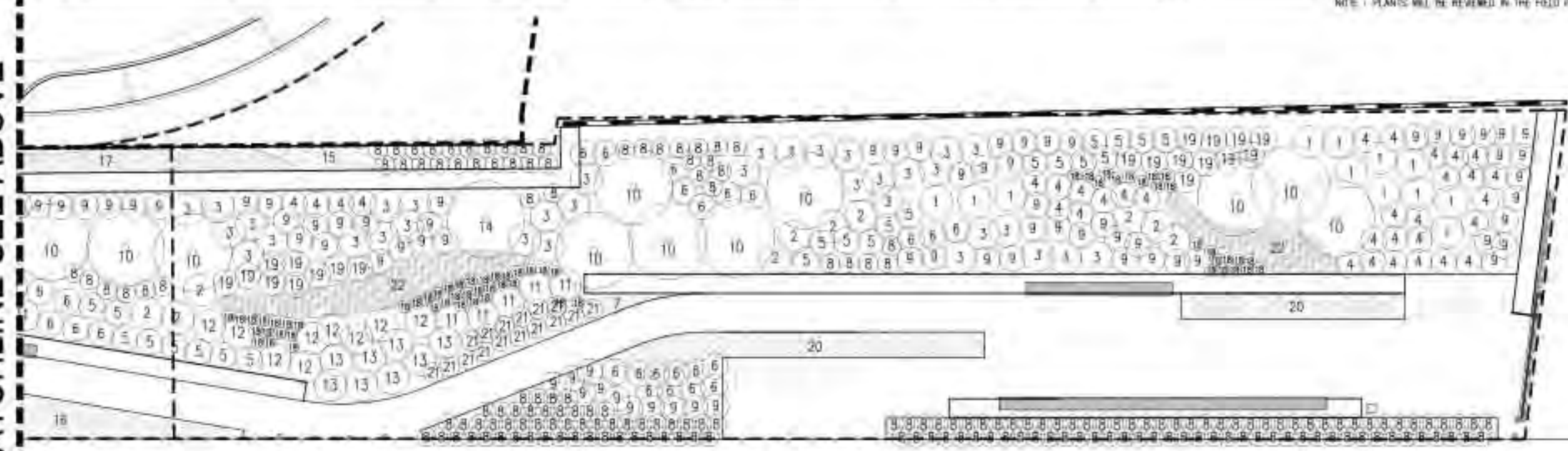
PLANTING LEGEND					
SYMBOL	BOTANICAL NAME	COMMON NAME	SIZE	SPACING	REMARKS
<b>TREES</b>					
(Symbol)	Eucalyptus				Existing tree
<b>VINES</b>					
(Symbol)	Dajalepis macrostyla "Anacapa Pea"	Anacapa Pea vine Monkey Sky	1 gal	As shown	Full, dense, symmetrical, well-rooted.
<b>SHRUBS</b>					
(Symbol)	Atriplex confertifolia "Brewer"	Brewer Saltbush	1 gal 5 gal	As shown	Full, dense, symmetrical, well-rooted.
(Symbol)	Artemisia californica	California Sagebrush	1 gal 5 gal	As shown	Full, dense, symmetrical, well-rooted.
(Symbol)	Baccharis pilularis "Tigean Pea"	Dwarf Coyote Brush	1 gal	As shown	Full, dense, symmetrical, well-rooted.
(Symbol)	Encelia californica	California Brittonbush	1 gal	As shown	Full, dense, symmetrical, well-rooted.
(Symbol)	Eriogonum parviflorum	Seaciff Buckwheat	1 gal	As shown	Full, dense, symmetrical, well-rooted.

PLANTING LEGEND CONTINUED					
SYMBOL	BOTANICAL NAME	COMMON NAME	SIZE	SPACING	REMARKS
<b>TREES</b>					
(Symbol)	Eriogonum fasciculatum	California Buckwheat	1 gal	As shown	Full, dense, symmetrical, well-rooted.
(Symbol)	Diaplykum confertiflorum	Golden Yarrow	1 gal	6" o.c.	Full, dense, symmetrical, well-rooted.
(Symbol)	Lolita scoparia	Deerwink	1 gal	As shown	Full, dense, symmetrical, well-rooted.
(Symbol)	Lupinus excubitus	Grape Soda Lupine	1 gal	As shown	Full, dense, symmetrical, well-rooted.
(Symbol)	Rhus integrifolia	Lemonade Berry	1 gal	As shown	Full, dense, symmetrical, well-rooted.
(Symbol)	Salvia spiana	White Sage	1 gal	As shown	Full, dense, symmetrical, well-rooted.
(Symbol)	Salvia leucophylla	Purple Sage	1 gal	As shown	Full, dense, symmetrical, well-rooted.
(Symbol)	Salvia mellifera	Black Sage	1 gal	As shown	Full, dense, symmetrical, well-rooted.
(Symbol)	Sambucus mexicana	Mexican Elderberry	1 gal	As shown	Full, dense, symmetrical, well-rooted.

PLANTING LEGEND CONTINUED					
SYMBOL	BOTANICAL NAME	COMMON NAME	SIZE	SPACING	REMARKS
<b>PERENNIALS/GRASSES</b>					
(Symbol)	Achillea millefolium	Western Yarrow	Hydroseed	As shown	Full, dense, symmetrical, well-rooted.
(Symbol)	Agrostis patens	Bent Grass	Sod	As shown	Full, dense, symmetrical, well-rooted.
(Symbol)	Carex proserpinaca	California Field Sedge	1 gal	6" o.c.	Full, dense, symmetrical, well-rooted.
(Symbol)	Ephedra cuneata	California Fuchsia	1 gal	As shown	Full, dense, symmetrical, well-rooted.
(Symbol)	Elymus condensatus	Giant Wild Rye	1 gal	As shown	Full, dense, symmetrical, well-rooted.
(Symbol)	Lynmus trilocularis	Beardless Widgee	1 gal	5" o.c.	Full, dense, symmetrical, well-rooted.
(Symbol)	Mimulus aurantiacus	Bush Monkey Flower	1 gal	As shown	Full, dense, symmetrical, well-rooted.
(Symbol)	Nassella pulchra	Purple Needle Grass	1 gal	As shown	Full, dense, symmetrical, well-rooted.
(Symbol)	Penstemon spectabilis	showy penstemon	1 gal	As shown	Full, dense, symmetrical, well-rooted.

NOTE: PLANTS WILL BE REVIEWED IN THE FIELD PRIOR TO INSTALLATION BY LANDSCAPE ARCHITECT

MATCHLINE SEE ABOVE



MRCA  
Attachment  
March 13, 2014  
Agenda Item VI(b)

**MILTON STREET PARK**  
LOS ANGELES, CA  
MOUNTAINS RECREATION & CONSERVATION AUTHORITY  
570 WEST AVENUE 25  
SUITE 100  
LOS ANGELES, CA 90005  
Fax: 323.221.8934  
Ph: 323.221.8944

**Landscape Architect:**  
**SWA** Los Angeles  
Los Angeles  
Los Angeles  
Los Angeles  
Los Angeles  
Los Angeles  
111 W. 7th Street  
Suite 430  
Los Angeles  
CA 90017  
Ph: 213.238.8091  
Ph: 213.238.0000  
www.swagroup.com

**Submittals:**  
1. Planting Schedule  
2. Planting Details  
3. Planting Specifications  
4. Planting List  
5. Planting Notes  
6. Planting Drawings  
7. Planting Photos  
8. Planting Videos  
9. Planting Audio  
10. Planting Other

**Discipline Stamp:**

1  
2  
3  
4  
5

**Revisions**

North Arrow  
Scale 1"=10'-0"

**Date:**  
1/23/14  
**Phase:**  
Final Check & Approval  
**Job Number:**  
111111

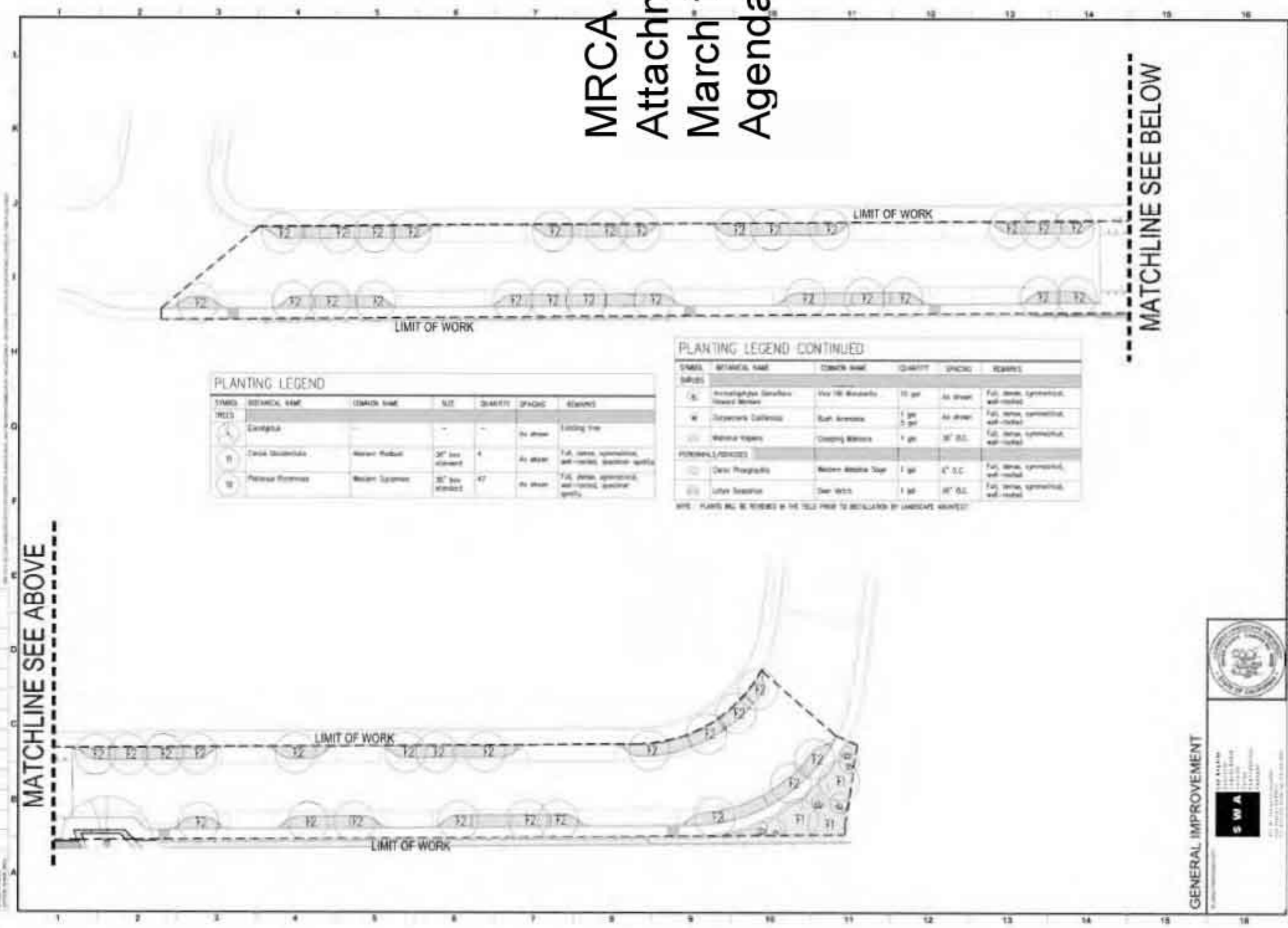
**Drawing Title:**  
PLANTING PLAN - EAST

**Drawing Number:**  
L6.01  
©2014 SWA Group





# MRCA Attachment March 13, 2013 Agenda Item



**PLANTING LEGEND**

SYMBOL	BOTANICAL NAME	COMMON NAME	SIZE	QUANTITY	SPACING	REMARKS
<b>TREES</b>						
T1	Castanea				As shown	Existing tree
T2	Quercus douglasii	Western Redbud	36" box standard	4	As shown	FUL, 100% symmetrical, well-rooted, specimen quality
T3	Platanus racemosa	Western Sycamore	36" box standard	47	As shown	FUL, 100% symmetrical, well-rooted, specimen quality

**PLANTING LEGEND CONTINUED**

SYMBOL	BOTANICAL NAME	COMMON NAME	QUANTITY	SPACING	REMARKS
<b>SHRUBS</b>					
S1	Artemisia tridentata	Four 18" Roundballs	10 per	As shown	FUL, 100% symmetrical, well-rooted
S2	Coronilla varia	Ruby Princess	1 per	As shown	FUL, 100% symmetrical, well-rooted
S3	Wisteria ssp.	Climbing Wisteria	1 per	36" dia.	FUL, 100% symmetrical, well-rooted
<b>PERENNIALS/ANNUALS</b>					
P1	Deloselinum	Western Bluebird Sage	1 per	4" x 4"	FUL, 100% symmetrical, well-rooted
P2	Urtica dioica	Stem Weeds	1 per	36" dia.	FUL, 100% symmetrical, well-rooted

NOTE: PLANTS WILL BE REVIEWED BY THE TOWN PRIOR TO INSTALLATION BY LANDSCAPE MAINTENANCE

GENERAL IMPROVEMENT



**SWA**  
S W A  
1000 S. GARDEN STREET, SUITE 100  
SAN ANTONIO, TEXAS 78205  
TEL: 214.343.1111  
WWW.SWA-ENGINEERS.COM

**PLANTING PLAN**  
MILYON STREET IMPROVEMENT  
MILYON ST. NEAR MARICAMPUS AVE.  
LOS ANGELES, CA 90008

**7**



PROJECT NO. 13-001  
DATE: 03/13/13  
DRAWN BY: [Name]  
CHECKED BY: [Name]  
SCALE: AS SHOWN  
BR 402569

PROJECT NO. 13-001  
DATE: 03/13/13  
DRAWN BY: [Name]  
CHECKED BY: [Name]  
SCALE: AS SHOWN

PROJECT NO. 13-001  
DATE: 03/13/13  
DRAWN BY: [Name]  
CHECKED BY: [Name]  
SCALE: AS SHOWN