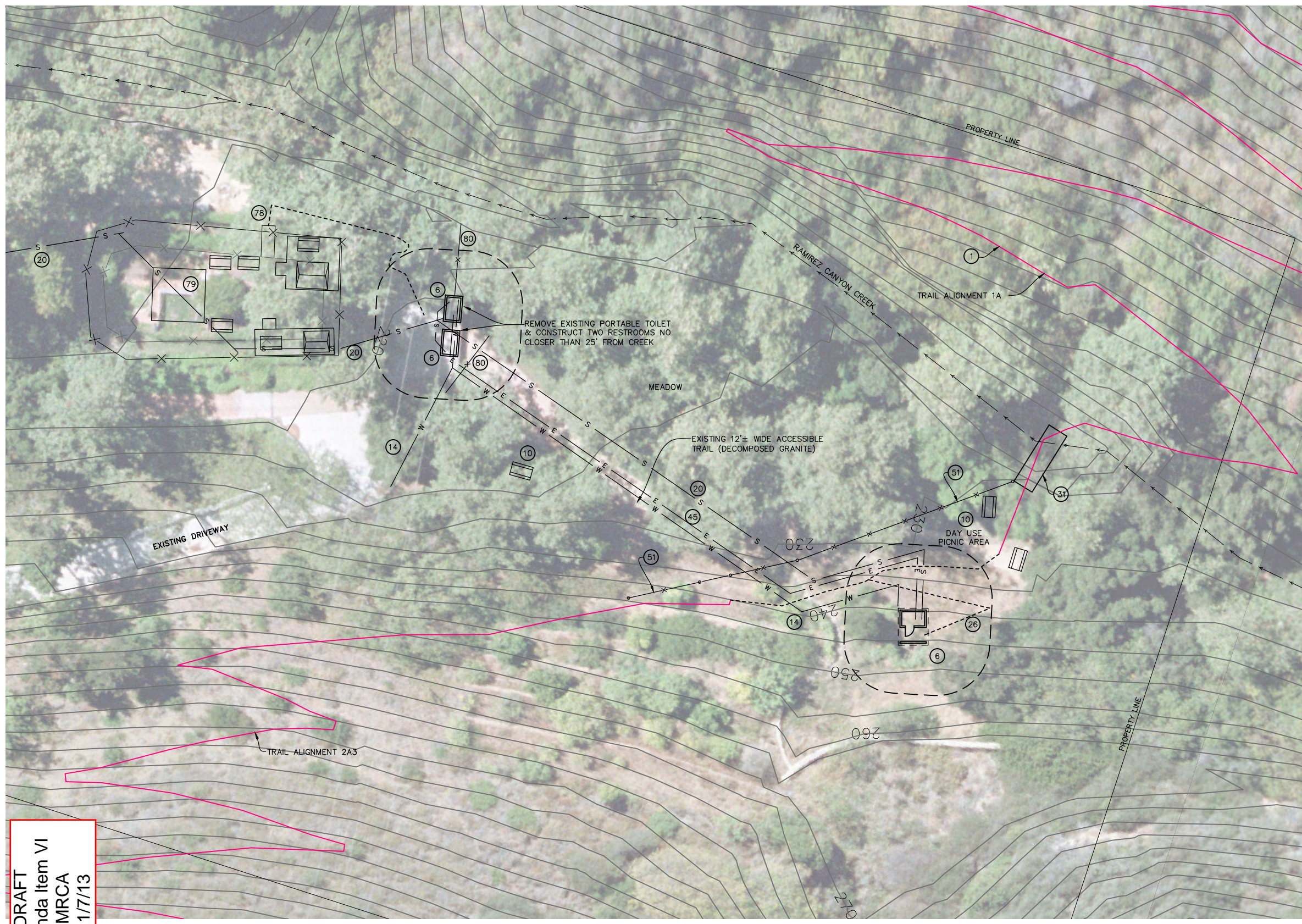


34-ENG SAVE DATE: 12/26/2012 12:54:13 PM PLOT BY: Bret Foster PLOT DATE: 12/26/2012 12:55:04 PM PLOT SCALE: 1:2.58

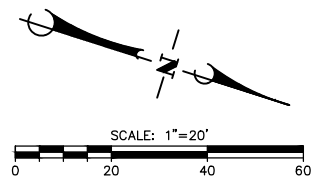
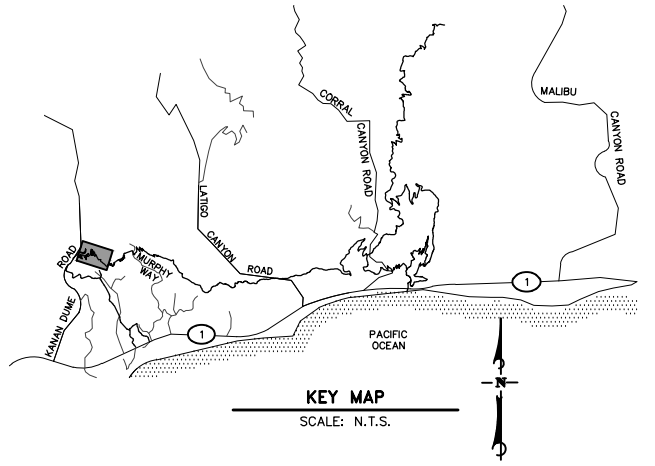
**DRAFT**  
**Agenda Item VI**  
**MRCA**  
**1/7/13**



**LEGEND**

— W —	PROPOSED WATER LINE
— U —	COMMON UTILITY TRENCH
— FW —	PROPOSED FIREWATER LINE
— [ ] —	PROPOSED RETAINING WALL
- - - -	VEGETATION MANAGEMENT BOUNDARY
→ → →	CREEK FLOW LINE
▲	GRADED SLOPE
●	HOSE BIBB, HYDRANT OR STANDPIPE
①	PARKING AREA NUMBER
②	CONSTRUCTION NOTE NUMBER
③	DEMOLITION NOTE NUMBER

- CONSTRUCTION NOTES**
- ① CONSTRUCT TRAIL OR IMPROVE EXISTING TRAIL TO MINIMUM 4' WIDE PER DETAIL C ON SHEET 6.
  - ⑥ CONSTRUCT RESTROOM.
  - ⑩ CONSTRUCT PICNIC AREA.
  - ⑭ CONSTRUCT 2" PVC WATER LINE PER DETAIL K ON SHEET 6 AND CONNECT TO EXISTING WATER LINE.
  - ⑳ CONSTRUCT 4" SEWER LINE PER DETAIL K ON SHEET 6 AND CONNECT TO EXISTING SEWER SYSTEM.
  - ⑳ CONSTRUCT 4' WIDE ACCESSIBLE TRAIL PER DETAIL C ON SHEET 6.
  - ⑳ CONSTRUCT FOOT BRIDGE.
  - ④⑤ CONSTRUCT ELECTRICAL CONDUIT PER DETAIL K ON SHEET 6.
  - ⑤① CONSTRUCT POST AND RAIL FENCE WITH GATE.
  - ⑦⑧ CONSTRUCT ADA APPROVED RAMP. IMPROVE ACCESSIBILITY OF EXISTING DECOMPOSED GRANITE TRAIL AND CONNECT TO RAMP.
  - ⑦⑨ ADA CAMPING AND OUTREACH VISITOR SHADE STRUCTURE. REMOVE INSIDE CORRAL FENCE AND LANDSCAPING. RETAIN OUTER FENCE. REMOVE BRICK PATHS AND GRASS. RETAIN PLANTER IN SOUTHEAST CORNER. RESURFACE INSIDE AREA WITH ACCESSIBLE SURFACE (DECOMPOSED GRANITE). INSTALL SINK AND DRINKING FOUNTAIN. PLANT NATIVE TREES. CONSTRUCT 3 PICNIC TABLES AND SHADE STRUCTURE (20'x20' COLUMNS W/ WOOD SLAT ROOF) AT SOUTH END OF CORRAL. CONSTRUCT TWO ADA CAMP SITES, TYPE 1 & TYPE 2, AT NORTH END OF CORRAL.
  - ⑧⑩ CONSTRUCT 6' HIGH FENCE WITH 3' WIDE GATE.



RAMIREZ CANYON - NORTH

**CONCEPT -**  
**COASTAL SLOPE TRAIL & ACCESSIBLE CAMPING, RAMIREZ**  
**CANYON (UNINCORPORATED LOS ANGELES COUNTY)**

FOR REDUCED PLANS  
 ORIGINAL SCALE IN INCHES

**DUDEK**  
 621 CHAPALA STREET  
 SANTA BARBARA, CA 93101  
 (805) 963-0651

NO.	DATE	REVISIONS	APPD.

**Perfield & Smith**  
 Engineering • Surveying • Planning  
 • Construction Management •  
 111 East Victoria Street, Santa Barbara, CA 93101  
 Phone: (805) 963-9532 Fax: (805) 966-9801

DESIGN: JHC CHECKED: BEF  
 BRET FOSTER DATE: \_\_\_\_\_  
 PROJECT ENGINEER  
 R.C.E. 48,267 (EXP. 06-30-14)

**RAMIREZ CANYON - NORTH**  
**RAMIREZ CANYON**  
**SANTA MONICA MOUNTAINS CONSERVANCY**  
 MALIBU, CALIFORNIA

P&S PROJECT NO.  
 13638.05  
 SHEET  
**5 OF 8**  
 PLAN DATE  
 DECEMBER 28, 2012

DRAWING: r:\acad\work\13638\civil\1-1-10\loc-cst-ram\13638\_uloc-cst-ram\_05\_ramirez.dwg