

LOS ANGELES RIVER CENTER AND GARDENS Sierra Madre Building

570 West Avenue 26
Los Angeles, California

A PROJECT OF:
Mountains Recreation and Conservation Authority

570 West Avenue 26, Suite 100
Los Angeles, CA 90065
(323) 221-9944

DESIGN:
Mountains Recreation and Conservation Authority

570 West Avenue 26, Suite 100
Los Angeles, CA 90065
(323) 221-9944

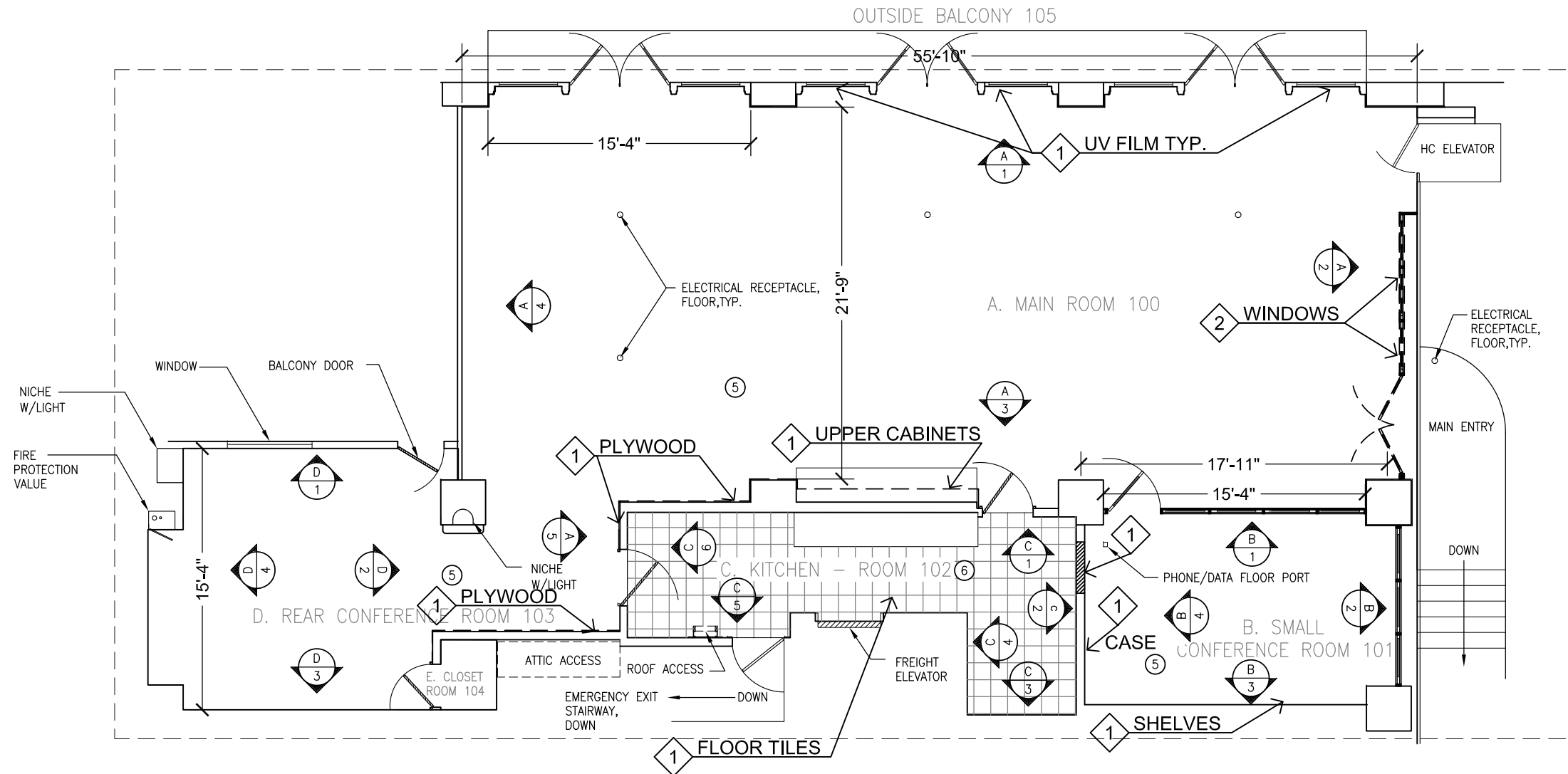
Attachment MRCA Item V(f) 10-5-11

NOTE:

ALL MEASUREMENTS HAND USING A STEEL TAPE MEASURE. MEASUREMENTS ARE FOR REFERENCE ONLY AND SHOULD NOT BE USED TO BUILD BY. DIMENSIONS ROUNDED TO NEAREST INCH.

FINISH AND TRIM

- ① STAINED WOOD PANELS
- ② UNFINISHED DRYWALL
- ③ PAINTED STUCCO
- ④ PAINTED DRYWALL
- ⑤ CARPET FLOOR COVERING
- ⑥ LINOLEUM FLOOR TILE
- ⑦ PAINTED DRYWALL
- ⑧ STAINED WOOD
- ⑨ ACOUSTIC CEILING TILES



1 EXISTING CONDITIONS PLAN - DEMOLITION
1/4"=1'-0"



DEMOLITION NOTES

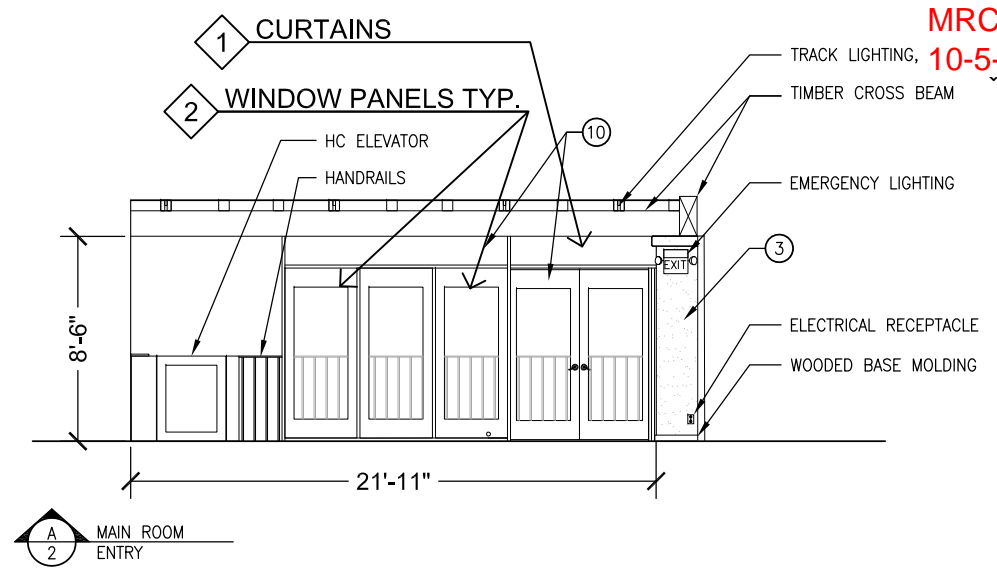
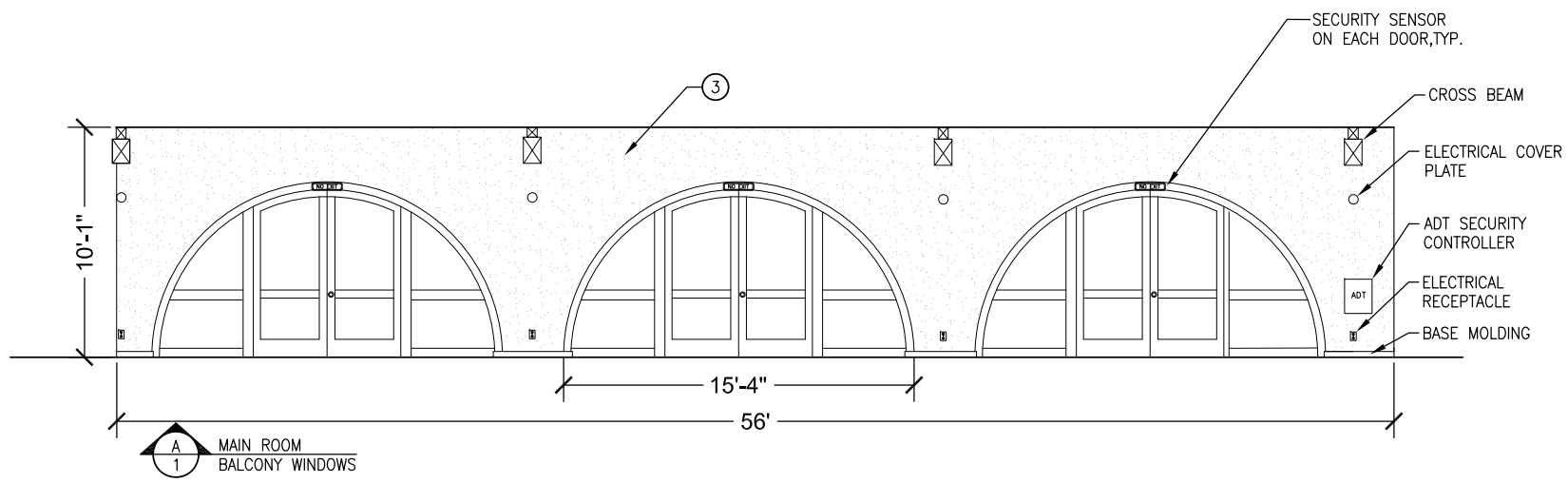
- ① DEMOLISH ITEM AND REMOVE FROM PROJECT SITE. RECYCLE MATERIALS AS FEASIBLE OR DISPOSE.
- ② REMOVE AND STORE/PREPARE ITEM FOR REUSE AT PROJECT SITE
- ③ PREPARE ITEM FOR REPLACEMENT OR RETROFITTED FIXTURE.

ISSUED:
MRCA Approval 10-5-11

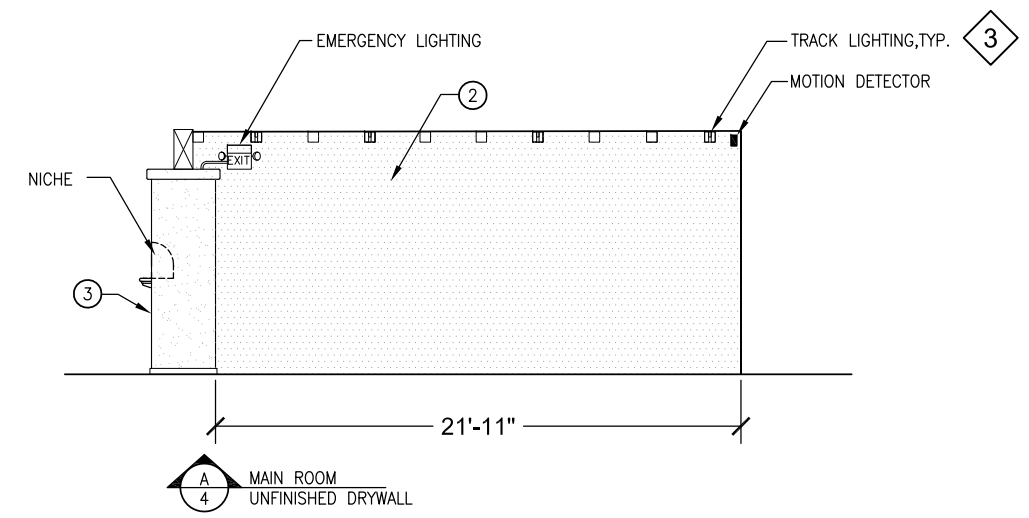
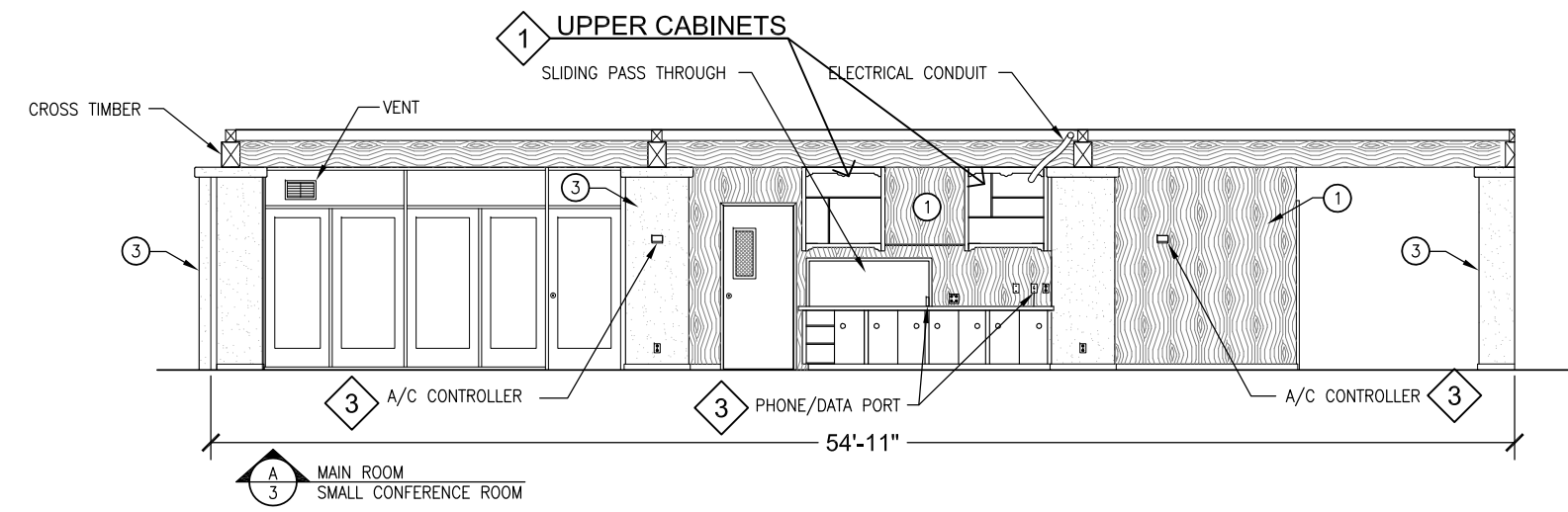
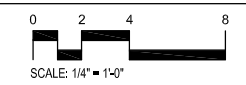
DRAWN: CM
CHECKED:
PROJECT: 9052-140
SCALE: AS NOTED

DEMOLITION PLAN UPSTAIRS

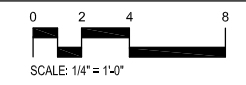
A-101



1 ELEVATION - EXISTING CONDITIONS ROOM 100
1/4"=1'-0"



2 ELEVATION - EXISTING CONDITIONS ROOM 100
1/4"=1'-0"



DEMOLITION NOTES

- ① DEMOLISH ITEM AND REMOVE FROM PROJECT SITE. RECYCLE MATERIALS AS FEASIBLE OR DISPOSE.
- ② REMOVE AND STORE/PREPARE ITEM FOR REUSE AT PROJECT SITE
- ③ PREPARE ITEM FOR REPLACEMENT OR RETROFITTED FIXTURE.

FINISH AND TRIM	
①	STAINED WOOD PANELS
②	UNFINISHED DRYWALL
③	PAINTED STUCCO
④	PAINTED DRYWALL
⑤	CARPET FLOOR COVERING
⑥	LINOLEUM FLOOR TILE
⑦	PAINTED DRYWALL
⑧	STAINED WOOD
⑨	ACOUSTIC CEILING TILES
⑩	PAINTED WOOD
⑪	GLASS DOOR
⑫	GLASS WINDOW

NOTE:
ALL MEASUREMENTS WERE TAKEN BY HAND USING A STEEL TAPE MEASURE. MEASUREMENTS ARE FOR REFERENCE ONLY AND SHOULD BE CONFIRMED IN THE FIELD. DIMENSIONS ROUNDED TO NEAREST INCH.

ISSUED:
MRCA Approval 10-5-11

DRAWN: CM
CHECKED:
PROJECT: 9052-140
SCALE: 1/4"=1'-0"

**ELEVATION
DEMOLITION**

