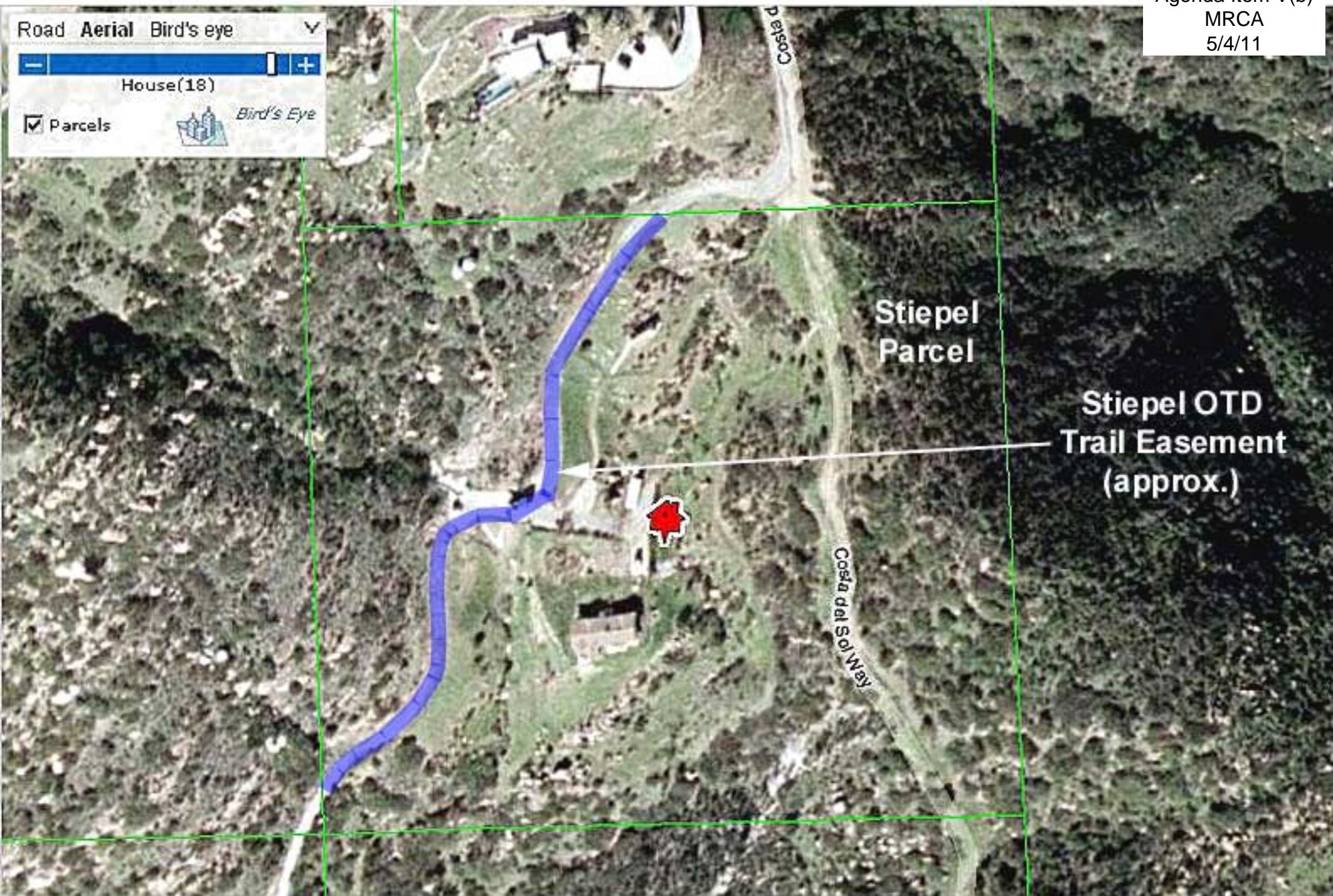


Road Aerial Bird's eye

House(18)

Parcels  Bird's Eye



Stiepel Parcel

Stiepel OTD Trail Easement (approx.)

Costa del Sol Way

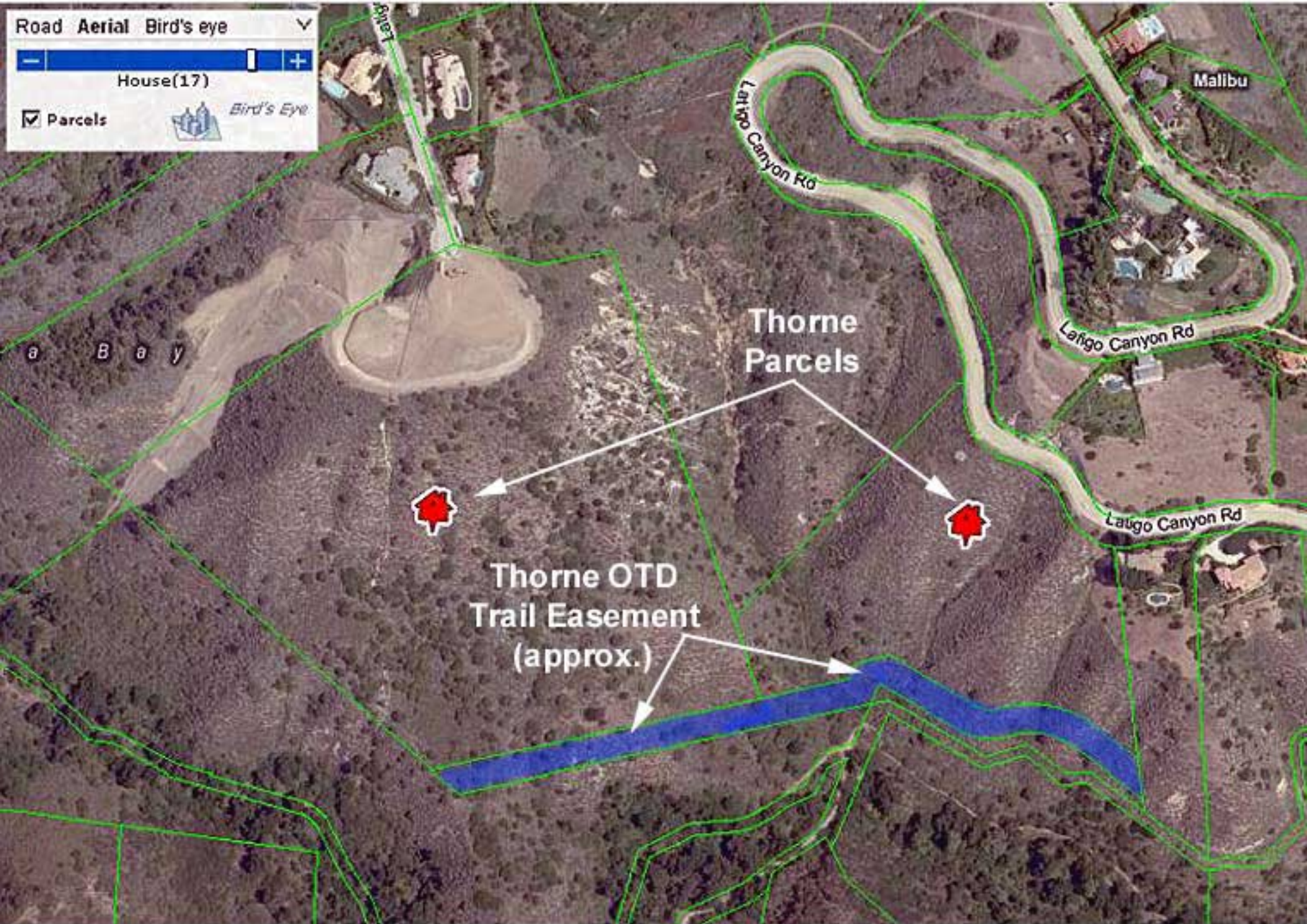


Road Aerial Bird's eye

House(17)

Parcels

Bird's Eye



Thorne  
Parcels

Thorne OTD  
Trail Easement  
(approx.)

Malibu

Laigo Canyon Rd

Laigo Canyon Rd

Laigo Canyon Rd

a B a y





Forge OTD  
Trail Easement  
(approx.)

Forge  
Parcel

26023 Pacific Coast Hwy, Malibu, CA 90265

© 2007 Europa Technologies

© 2007 TurnHere, Inc.

Streaming 100%

Google

Lat 34°02'03.82" N 118°44'30.98" W elev 138 ft

Eye all 1273 ft

**NOTE: Boundaries and easements depicted are approximate, and not to scale.**

**Image Source: Google Earth 2007**



Road Aerial Bird's eye

House(17)

Parcels  Bird's Eye



Noman OTD  
Trail Easement  
(approx.)

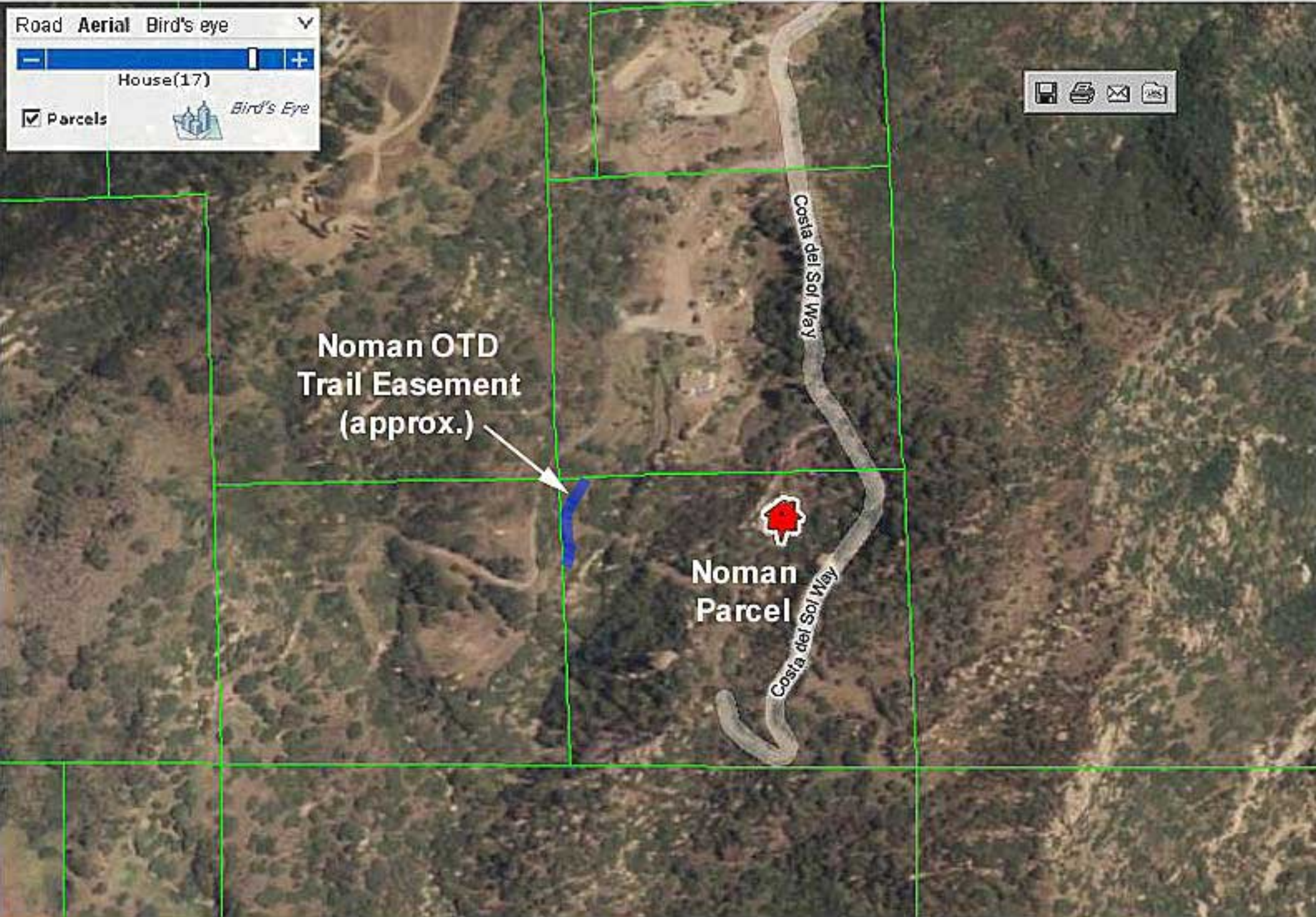


Noman  
Parcel



Costa del Sol Way

Costa del Sol Way







**NOTE: Boundaries and easements depicted are approximate, and not to scale.  
Image Source: Google Earth 2007**



Road Aerial Bird's eye

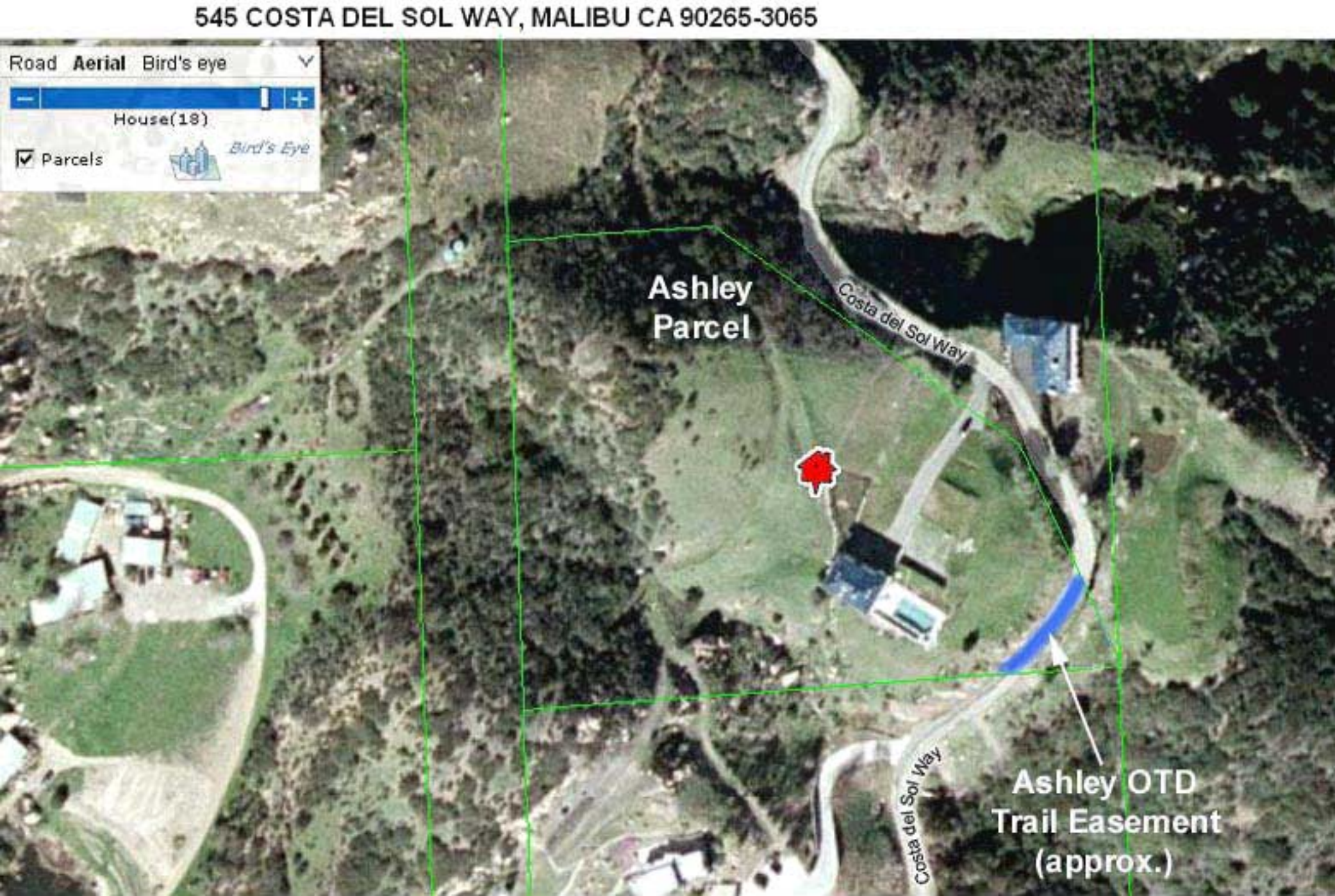
House(18)

Parcels  Bird's Eye

Ashley  
Parcel



Ashley OTD  
Trail Easement  
(approx.)





520 COSTA DEL SOL WAY, MALIBU CA 90265-3093

Road Aerial Bird's eye

House(18)

Parcels *Bird's Eye*



Ashley Parcel

Ashley OTD Trail Easement (approx.)

Costa del Sol Way

Costa del Sol Way